

1 INTERNET-DRAFT - 17 ISSUES are numbered and highlighted like this
2 <draft-ietf-ipp-ops-set2-01.txt>

Carl Kugler
IBM Corporation
T. Hastings
Xerox Corporation
H. Lewis
IBM Corporation
November 16, 1999

3 4 5 6 7 8 Internet Printing Protocol/1.1: Set2 Operations

9 10 11 Status of this Memo

12 This document is an Internet-Draft and is in full conformance with all provisions of Section 10 of
13 [RFC2026]. Internet-Drafts are working documents of the Internet Engineering Task Force (IETF), its
14 areas, and its working groups. Note that other groups may also distribute working documents as Internet-
15 Drafts.

16 Internet-Drafts are draft documents valid for a maximum of six months and may be updated, replaced, or
17 obsoleted by other documents at any time. It is inappropriate to use Internet-Drafts as reference material or
18 to cite them other than as "work in progress".

19 The list of current Internet-Drafts can be accessed at <http://www.ietf.org/ietf/1id-abstracts.txt>

20 The list of Internet-Draft Shadow Directories can be accessed as <http://www.ietf.org/shadow.html>.

21 Abstract

22 This document specifies 14 additional OPTIONAL operations for use with the Internet Printing
23 Protocol/1.0 (IPP) [RFC2565, RFC2566] and IPP/1.1 [ipp-mod, ipp-pro]. These operations are 7 Printer
24 object operations that operators/administrators may perform on a Printer object:

25 Set-Printer-Attributes
26 Enable-Printer
27 Disable-Printer
28 Restart-Printer
29 Shutdown-Printer

30 and 7 Job object operations that end-users may perform on their jobs and operators/administrators may
31 perform on any job, depending on circumstances:

32 Set-Job-Attributes
33 Reprocess-Job
34 Cancel-Current-Job (though the target is the Printer object)
35 Pause-Current-Job (though the target is the Printer object)
36 Resume-Job
37 Promote-Job

38 The Interpreter object is added for those implementations that make a distinction on the values of some
39 Printer attributes depending on the document-format, such as "resolution-supported".

40 In addition, two operation attributes are defined: "printer-message-from-operator" and "job-message-from-
41 operator" are included to set the corresponding Printer and Job Description attributes with the same names.
42 And the "when" operation attribute is added to the IPP/1.1 Pause-Printer operation as well as some of the
43 Set2 Printer operations.

44 New Printer Description attributes are added, along with additional values for the "printer-state-reasons"
45 and "job-state-reasons" attributes.

46 New status codes: 'client-error-attributes-not-settable' and 'server-error-printer-is-in-standby-mode' are
47 added.

48 Finally, the 'not-settable' out-of-band value is added for use with the Set-Printer-Attributes and Set-Job-
49 Attributes operations.

50 The scope of IPP, is characterized in RFC2526 "Design Goals for an Internet Printing Protocol". It is not
51 the intent of this document to revise or clarify this scope or conjecture as to the degree of industry adoption
52 or trends related to IPP within printing systems. It is the intent of this document to extend the original set
53 of operations - in a similar fashion to the Set1 extensions which referred to IPP/1.0 and were later
54 incorporated into IPP/1.1.

55 This document is intended for registration following the registration procedures of IPP/1.0 [RFC2566] and
56 IPP/1.1 [ipp-mod]. This version includes the comments discussed at the IPP telecon, on 6/23/1999,
57 6/30/1999, at the IETF IPP WG meeting, 7/7/99-7/8/99, in Copenhagen, and the IPP telecon, 7/17/1999, the
58 August, 1999 IPP meeting in Alaska and subsequent phone conferences and discussions. Specifically, the
59 9/16 update refers to this set of extensions simply as "Set2" rather than using the term "Administrative"
60 which was misleading, controversial and incorrect as an overall description. Also, two new attributes have
61 been proposed to clarify the intent of each operation in terms of its target, the Printer vs. the Print Job.
62 **Unresolved ISSUES are highlighted like this in the .doc and .pdf files.**

63 The full set of IPP documents includes:

- 64 Design Goals for an Internet Printing Protocol [RFC2567]
- 65 Rationale for the Structure and Model and Protocol for the Internet Printing Protocol [RFC2568]
- 66 Internet Printing Protocol/1.1: Model and Semantics (this document)
- 67 Internet Printing Protocol/1.1: Encoding and Transport [IPP-PRO]
- 68 Internet Printing Protocol/1.1: Implementer's Guide [IPP-IIG]
- 69 Mapping between LPD and IPP Protocols [RFC2569]

70

71 The "Design Goals for an Internet Printing Protocol" document takes a broad look at distributed printing
72 functionality, and it enumerates real-life scenarios that help to clarify the features that need to be included
73 in a printing protocol for the Internet. It identifies requirements for three types of users: end users,
74 operators, and administrators. It calls out a subset of end user requirements that are satisfied in IPP/1.0. A
75 few OPTIONAL operator operations have been added to IPP/1.1.

76 The "Rationale for the Structure and Model and Protocol for the Internet Printing Protocol" document
77 describes IPP from a high level view, defines a roadmap for the various documents that form the suite of
78 IPP specification documents, and gives background and rationale for the IETF working group's major
79 decisions.

80 The "Internet Printing Protocol/1.1: Encoding and Transport" document is a formal mapping of the abstract
81 operations and attributes defined in the model document onto HTTP/1.1 [RFC2616]. It defines the
82 encoding rules for a new Internet MIME media type called "application/ipp". This document also defines
83 the rules for transporting over HTTP a message body whose Content-Type is "application/ipp". This
84 document defines a new scheme named 'ipp' for identifying IPP printers and jobs.

85 The "Internet Printing Protocol/1.1: Implementer's Guide" document gives insight and advice to
86 implementers of IPP clients and IPP objects. It is intended to help them understand IPP/1.1 and some of the
87 considerations that may assist them in the design of their client and/or IPP object implementations. For
88 example, a typical order of processing requests is given, including error checking. Motivation for some of
89 the specification decisions is also included.

90 The "Mapping between LPD and IPP Protocols" document gives some advice to implementers of gateways
91 between IPP and LPD (Line Printer Daemon) implementations.

92

Table of Contents

93	1	Introduction	6
94	2	New objects and new relationships of existing objects	6
95	2.1	Interpreter object	6
96	2.2	Use of the Printer object to represent IPP Printer fan-out and IPP Printer fan-in	7
97	2.2.1	IPP Printer fan-out	7
98	2.2.2	IPP Printer fan-in	7
99	2.2.3	Printer object attributes used to represent Printer fan-out and Printer fan-in	7
100	2.2.4	Printer object attributes used to represent output device fan-out	8
101	2.2.5	Figures to show all possible configurations	10
102	2.3	Forwarding requests	11
103	2.3.1	Forwarding requests that affect Printer objects	12
104	2.3.2	Forwarding requests that affect Jobs	12
105	3	New Operation attributes	14
106	3.1	New operation attribute: "printer-message-from-operator" (text(127))	14
107	3.2	New operation attribute: "job-message-from-operator" (text(127))	15
108	3.3	New operation attribute for Get-Printer-Attributes: "factory-settings" (boolean)	16
109	3.4	New operation attribute for Pause-Printer: "when" (type2 keyword)	17
110	3.5	Summary of the operation attributes for the Printer operations	18
111	3.6	Summary of the operation attributes for the Job operations	18
112	4	New Printer Description Attributes	19
113	4.1	printer-settable-attributes (1setOf type2 keyword)	19
114	4.2	job-settable-attributes (1setOf type2 keyword)	20
115	4.3	printer-controls-other-protocols (boolean)	20
116	4.4	printer-message-time (integer(MIN:MAX))	21
117	4.5	printer-message-date-time (dateTime)	21
118	4.6	printer-message-operation (type2 keyword)	22
119	4.7	subordinate-printers-supported (1setOf uri)	23
120	5	Additional values for "printer-state-reasons" and "job-state-reasons" attributes	23
121	5.1	Value for "printer-state-reasons": 'standby'	23
122	5.2	Value for "job-state-reasons": 'job-paused'	23
123	6	New status codes	23
124	6.1	New status code: 'client-error-attributes-not-settable'	24
125	6.2	New status code: 'server-error-printer-is-in-standby-mode'	24
126	7	New out-of-band values	24
127	7.1	'not-settable' out of band value	24
128	8	Summary of Set 2 operations and Operation-Id Assignments	25

129	8.1	Printer Operations	26
130	8.1.1	Set-Printer-Attributes Operation	26
131	8.1.2	Disable-Printer Operation	31
132	8.1.3	Enable-Printer Operation	32
133	8.1.4	Restart-Printer operation	33
134	8.1.5	Shutdown-Printer Operation	35
135	8.2	Job Operations	37
136	8.2.1	Set-Job-Attributes	37
137	8.2.2	Reprocess-Job Operation	41
138	8.2.3	Cancel-Current-Job Operation	42
139	8.2.4	Pause-Current-Job operation.....	43
140	8.2.5	Resume-Job operation.....	45
141	8.2.6	Promote-Job operation	46
142	9	IANA Considerations	47
143	10	Internationalization Considerations.....	47
144	11	Security Considerations.....	47
145	12	Author's Addresses	47
146	13	References	48
147	14	Change History.....	48
148	14.1	Changes to the October 22, 1999 version to make the November 1, 1999 version	48
149	14.2	Changes to the September 19, 1999 version to make the October 22, 1999 version.....	49
150	14.3	Changes to the July 19, 1999 version to make the September 19, 1999 version.....	50
151	14.4	Changes to the June 30, 1999 version to make the July 19, 1999 version.....	50
152	15	Appendix A: Full Copyright Statement.....	52

List of Tables

155	Table 1 - Forwarding operations that affect Printer objects	12
156	Table 2 - Forwarding operations that affect Jobs objects	13

List of Figures

160	Figure 1 - embedded Printer object	10
161	Figure 2 - hosted Printer object	10
162	Figure 3 - output device fan out.....	10
163	Figure 4 - IPP Printer fan out.....	11
164	Figure 5 - IPP Printer fan in.....	11

165

166 1 Introduction

167 The Internet Printing Protocol (IPP) is an application level protocol that can be used for distributed printing
168 using Internet tools and technologies. IPP version 1.1 (IPP/1.1) focuses on end user functionality with a
169 few administrative operations included. This document defines additional OPTIONAL end user, operator,
170 and administrator operations used to control Jobs and Printers. This document is a registration proposal for
171 an extension to IPP/1.0 and IPP/1.1 following the registration procedures in those documents.

172 2 New objects and new relationships of existing objects

173 This section defines the new Interpreter object and the use of the IPP Printer object to represent IPP Printer
174 fan-out and IPP Printer fan-in.

175 2.1 Interpreter object

176 The Interpreter object models the document format interpreters that are contained in the Printer object. The
177 purpose of the Interpreter object is to model those Printer attributes whose value depends on which
178 interpreter is being used to process the document. Depending on implementation, the Printer object
179 attributes whose values ("xxx-supported" and "xxx-default") depend on the interpreter, i.e., on the
180 "document-format" of the document being processed, are considered to be Interpreter object attributes
181 instead. A Get-Printer-Attributes operation returns Printer and Interpreter attributes as specified in the
182 "requested-attributes" operation attribute supplied by the client. Depending on the value of the "document-
183 format" attribute supplied by the client in the Get-Printer-Attributes request (or the "document-format-
184 default", if the client omits the "document-format" attribute), selects the corresponding Interpreter object.

185 If an implementation does not make a distinction on the values of Printer attributes by document format,
186 say, for purposes of job validation (see [ipp-mod] Get-Printer-Attributes), there is no need to implement or
187 support the Interpreter object. The Interpreter object is introduced to provide a means to model an
188 implementation in which some attributes do depend on the document format. Those attributes are then sub-
189 classed to be Interpreter object attributes.

190 Note: the addition of the Interpreter object is completely compatible with IPP/1.0 and IPP/1.1 (see the
191 description of the "document-format" operation attribute in [ipp-mod] section 3.2.5.1 Get-Printer-Attributes
192 request). The protocol and semantics are the same whether or not the Interpreter object is used to
193 distinguish attributes that depend on the "document-format". Consequently, there is no "interpreters-
194 supported" Printer Description attribute. In order to determine which Interpreter objects there MAY be, the
195 client can request the values of the Printer's "document-format-supported" attribute.

196 Note: The Interpreter object is really a sub-class of the Printer object, rather than being a full fledged object
197 in the sense that the Job and Printer objects are. There are no operations defined solely for the Interpreter
198 object. The Get-Printer-Attributes and Set-Printer-Attributes operations operate on the Interpreter object if
199 the implementation has the concept of an Interpreter object. However, if the IPP Printer implementation

200 does not contain Interpreter objects, the same Interpreter object attributes are considered Printer object
201 attributes, instead.

202 2.2 Use of the Printer object to represent IPP Printer fan-out and IPP Printer fan-in

203 This section defines how the Printer object MAY be used to represent IPP Printer fan-out and IPP Printer
204 fan-in. Fan-out is where an IPP Printer is used to represent other IPP Printer objects. Fan-in is where
205 several IPP Printer objects are used to represent another IPP Printer object.

206 2.2.1 IPP Printer fan-out

207 The IPP/1.1 Model and Semantics introduces the semantic concept of an IPP Printer object that represents
208 more than one output device (see [ipp-mod] section 2.1). This concept is called "output device fan-out".
209 However, there was no way to represent the individual states of the output devices or to perform operations
210 on a specific output device when there was fan-out. This specification generalizes the semantics of the
211 Printer object to represent such "subordinate" fan-out output devices as IPP Printer objects. This concept is
212 called "Printer object fan-out". A Printer object that has a subordinate Printer object is called a "non-leaf"
213 Printer object. Thus a "non-leaf" Printer object MAY support one or more subordinate Printer objects in
214 order to represent Printer object fan-out. A Printer object that does not have any subordinate Printer objects
215 is called a "leaf" Printer object.

216 2.2.2 IPP Printer fan-in

217 The IPP/1.1 Model and Semantics did not preclude the semantic concept of multiple IPP Printer objects that
218 represent a single output device (see [ipp-mod] section 2.1). However, there was no way for the client to
219 determine that there was a fan-in configuration, nor was there a way to perform operations on the
220 subordinate device. This specification generalizes the semantics of the Printer object to allow several "non-
221 leaf" IPP Printer objects to represent a single "subordinate" Printer object. Thus a "non-leaf" Printer object
222 MAY share a subordinate Printer object with one or more other non-leaf Printer objects in order to
223 represent IPP Printer fan-in. As with fan-out (see section 2.2), when a Printer object is a non-leaf, it MUST
224 NOT have an associated output device. As with fan-out, a leaf Printer object has an associated output
225 device(s). As with fan-out, the non-leaf Printer objects submit jobs to their subordinate Printer objects and
226 otherwise control the subordinate Printer. As with fan-out, whether pending jobs are kept in the non-leaf
227 Printers until the subordinate Printer can accept them or are kept in the subordinate Printer depends on
228 implementation and/or configuration policy.

229 2.2.3 Printer object attributes used to represent Printer fan-out and Printer fan-in

230 Each non-leaf Printer object submits jobs to its immediate subordinate Printers and otherwise controls the
231 subordinate Printers using IPP or other protocols. Whether pending jobs are kept in the non-leaf Printer
232 until a subordinate Printer can accept them or are kept in the subordinate Printers depends on
233 implementation and/or configuration policy. Furthermore, a subordinate Printer object MAY, in turn, have
234 subordinate Printer objects. Thus a Printer object can be both a non-leaf Printer and a subordinate Printer.

235 A subordinate Printer object MUST be a conforming Printer object, so it MUST support all of the
236 REQUIRED operations and attributes. However, with access control, the subordinate Printer MAY be
237 configured so that end-user clients are not permitted to perform any operations (or just Get-Printer-
238 Attributes) while one or more non-leaf Printer object(s) are permitted to perform any operation.

239 The following Printer Description attributes are defined to represent the relationship between Printer
240 object(s) and their subordinate Printer object(s):

- 241 1. "subordinate-printers-supported" (1setOf uri) - contains the URI of the immediate subordinate Printer
242 object(s). Each non-leaf Printer object MUST support this Printer Description attribute. A leaf Printer
243 object either does not support the "subordinate-printers-supported" attribute or does so with the 'no-
244 value' out-of-band value (see [ipp-mod] section 4.1).
- 245 2. "parent-printers-supported" (1setOf uri) - contains the URI of the non-leaf printer object(s) for which this
246 Printer object is the immediate subordinate, i.e., this Printer's immediate "parent" or "parents". Each
247 subordinate Printer object MUST support this Printer Description attribute. A Printer that has no
248 parents, either does not support the "parent-printers-supported" attribute or does so with the 'no-value'
249 out-of-band value (see [ipp-mod] section 4.1).

250

251 Each subordinate Printer object has a URI which is used as the target of each operation on the subordinate
252 Printer. The means for configuring URIs for subordinate Printer objects is implementation-dependent as
253 are all URIs. However, there are two distinct approaches:

254 a. When the implementation wants to make sure that no operation on a subordinate Printer object as
255 a target "sneaks by" the parent Printer object (or the subordinate Printer is fronting for a device that
256 is not networked), the host part of the URI specifies the host of the parent Printer. Then the parent
257 Printer object can easily reflect the state of the subordinate Printer objects in the parent's Printer
258 object state and state reasons as the operation passes "through" the parent Printer object.

259 b. When the subordinate Printer is networked and the implementation allows operations to go
260 directly to the subordinate Printer (with proper access control) without knowledge of the parent
261 Printer object, the host part of the URI is different than the host part of the parent Printer object. In
262 such a case, the parent Printer object MUST keep its "printer-state" and "printer-state-reasons" up to
263 date, either by polling the subordinate Printer object or by subscribing to events with the subordinate
264 Printer object (see [ipp-not-spec] for means to do this when the subordinate Printer object supports
265 IPP notification).

266 2.2.4 Printer object attributes used to represent output device fan-out

267 When a Printer object is a non-leaf, it MUST NOT have an associated output device. Only leaf IPP Printer
268 objects are allowed to have one or more associated output devices. Each leaf Printer object MAY support
269 the "output-devices-supported" (1setOf name(127)) to indicate the user-friendly name(s) of the output
270 device(s) that the leaf Printer object represents. It is RECOMMENDED that each leaf Printer object have
271 only one associated output device, so that the individual output devices can be represented completely and

272 controlled completely by clients. In other words, the Printer's "output-devices-supported" attribute
273 SHOULD have only one value.

274

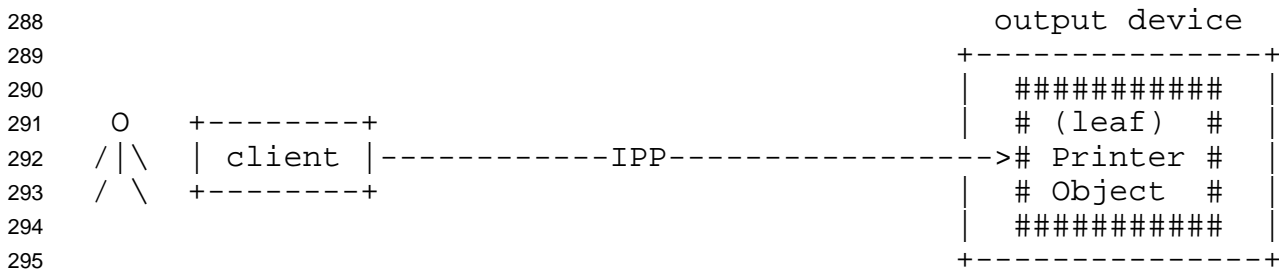
275 2.2.5 Figures to show all possible configurations

276 Figure 1, Figure 2, and Figure 3 are taken from [ipp-mod] to show the configurations possible with IPP/1.0
277 and IPP/1.1 where all Printer objects are leaf Printer objects. The remaining figures show additional
278 configurations that this document defines using non-leaf and leaf Printer objects. Legend for all figures:

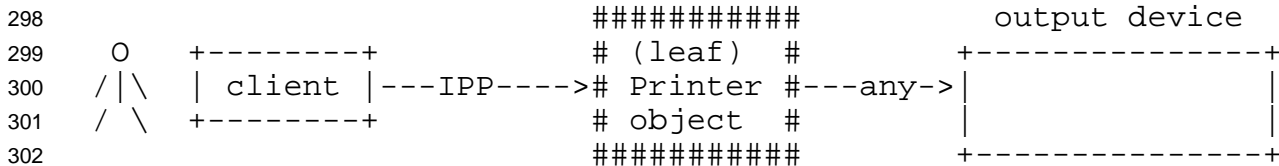
279 ----> indicates a network protocol with the direction of its requests

280
281 ##### indicates a Printer object which is either:
282 - embedded in an output device or
283 - hosted in a server. The Printer object
284 might or might not be capable of queuing/spooling.

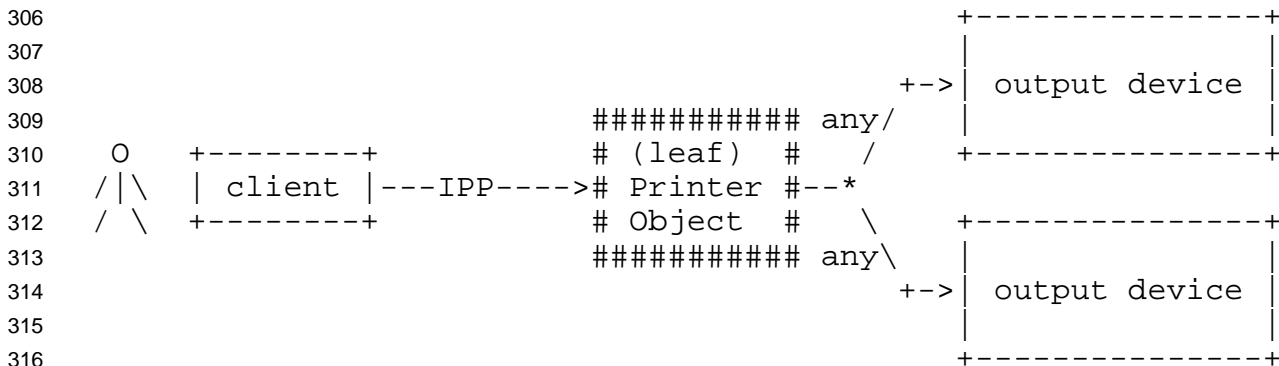
285
286 any indicates any network protocol or direct
287 connect, including IPP



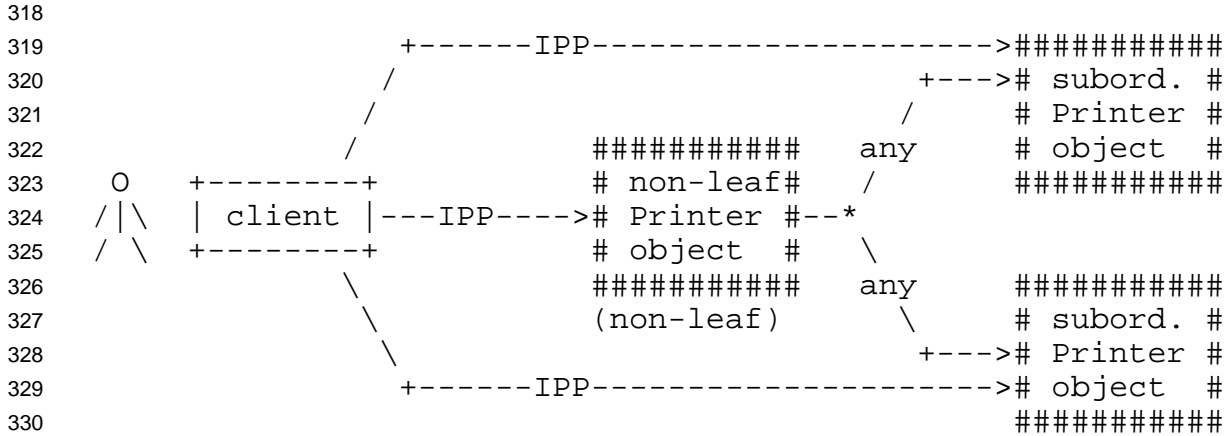
296 **Figure 1 - embedded Printer object**



304 **Figure 2 - hosted Printer object**

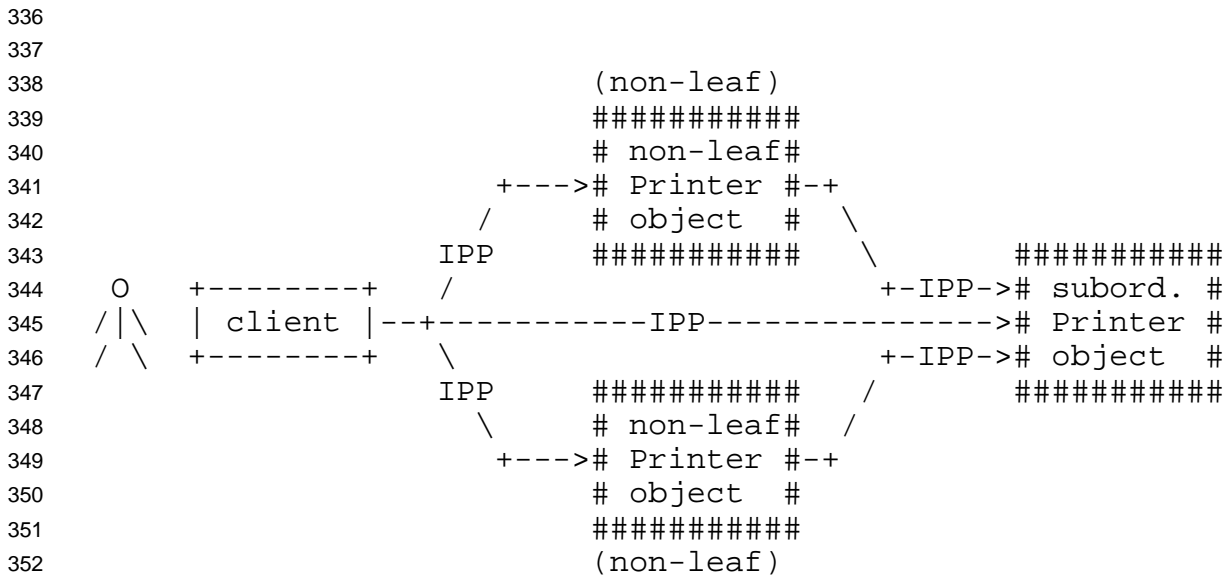


317 **Figure 3 - output device fan out**



332 The subordinate Printer can be a non-leaf Printer as in Figure 4 or
333 Figure 5, or can be a leaf Printer as in Figure 1, Figure 2, or Figure
334 3.

335 **Figure 4 - IPP Printer fan out**



354 The subordinate Printer can be a non-leaf Printer as in Figure 4 or
355 Figure 5, or can be a leaf Printer as in Figure 1, Figure 2, or Figure
356 3.

357 **Figure 5 - IPP Printer fan in**

358

359 2.3 Forwarding requests

360 This section describes the forwarding Job and Printer requests to subordinate Printer objects.

361 2.3.1 Forwarding requests that affect Printer objects

362 In both fan-out and fan-in, the non-leaf IPP Printer object **MUST NOT** forward the Printer operations that
 363 affect Printer object to its subordinate Printer objects. If a client wants to explicitly target a subordinate
 364 Printer, the client must specify the URI of the subordinate Printer. Table 1 lists the operations that affect
 365 Printer objects and the forwarding behavior that a non-leaf Printer **MUST** exhibit to its immediate
 366 subordinate Printers:

367 **Table 1 - Forwarding operations that affect Printer objects**

Printer operation	Non-leaf Printer action
Set2 Printer operations:	
Set-Printer-Attributes	MUST NOT forward to any of its subordinate Printers
Enable-Printer	MUST NOT forward to any of its subordinate Printers
Disable-Printer	MUST NOT forward to any of its subordinate Printers
Restart-Printer	MUST NOT forward to any of its subordinate Printers
Shutdown-Printer	MUST NOT forward to any of its subordinate Printers
IPP/1.1 Printer operations:	
Get-Printer-Attribute	MUST NOT forward to any of its subordinate Printers
Pause-Printer	MUST NOT forward to any of its subordinate Printers
Resume-Printer	MUST NOT forward to any of its subordinate Printers

368

369 **ISSUE 01**- Should the purpose of the corresponding device operations, such as Pause-Device, Disable-
 370 Device, and Shutdown-Device (see [ipp-set3], to be forwarded by Printer objects to their subordinate
 371 Printers down to the leaf Printers objects in order to affect their corresponding output device? Using device
 372 operations in this way would relieve the operator client from having to work its way down the Printer object
 373 chain in order to affect an output device of a leaf Printer object.

374 **ISSUE 02** - If a Printer object **MUST** forward a device operation down to the leaf Printer objects, would
 375 fanning out such forwarded device operations be too drastic? If yes, then maybe the device operations
 376 would need an operation attribute to say whether or not to allow fan-out of device operations, with the
 377 default value being 'false'.

378 **ISSUE 03** - Does the administrator need a Printer object attribute that says whether or not this Printer object
 379 is to forward device operations when it has more than one subordinate Printer object? The default would be
 380 'false'.

381 2.3.2 Forwarding requests that affect Jobs

382 Unlike Printer operations that only affect Printer objects (see section 2.3.1, a non-leaf Printer object **MUST**
 383 forward operations that directly affect jobs to the appropriate Job object(s) in one or more of its immediate
 384 subordinate Printer objects. Such forwarding **MAY** be immediate or queued, depending on the operation
 385 and the implementation. For example, a non-leaf Printer object **MAY** queue/spool jobs, feeding a job at a
 386 time to its subordinate Printer(s), or **MAY** forward jobs immediately to one of its subordinate Printers. In

387 either case, the non-leaf Printer object is forwarding Job Creation operations to one of its subordinate
 388 Printers. Only the time of forwarding of the Job Creation operations depends on whether the policy is to
 389 queue/spool jobs in the non-leaf Printer or the subordinate Printer.

390 When a non-leaf Printer object creates a Job object in its subordinate Printer, whether that non-leaf Printer
 391 object keeps a fully formed Job object or just keeps a mapping from the "job-ids" that it assigned to those
 392 assigned by its subordinate Printer object is IMPLEMENTATION-DEPENDENT. In either case, the non-
 393 leaf Printer MUST be able to accept and carry out future Job operations that specify the "job-id" that the
 394 non-leaf Printer assigned and returned to the job submitting client.

395 Table 2 lists the operations that directly affect jobs and the forwarding behavior that a non-leaf Printer
 396 MUST exhibit to its subordinate Printers:

397 **Table 2 - Forwarding operations that affect Jobs objects**

Job operation	Non-leaf Printer action
Set2 Job operations:	
Set-Job-Attributes	MUST forward to the appropriate Job in one of its subordinate Printers
Reprocess-Job	MUST forward to the appropriate Job in one of its subordinate Printers
Cancel-Current-Job	MUST forward to the appropriate Job in one of its subordinate Printers
Pause-Current-Job	MUST forward to the appropriate Job in one of its subordinate Printers
Resume-Job	MUST forward to the appropriate Job in one of its subordinate Printers
Promote-Job	MUST forward to the appropriate Job in one of its subordinate Printers
IPP/1.1 Printer operations:	
Print-Job	MUST forward immediately or queue to the appropriate subordinate Printer
Print-URI	MUST forward immediately or queue to the appropriate subordinate Printer
Validate-Job	MUST forward to the appropriate subordinate Printer
Create-Job	MUST forward immediately or queue to the appropriate subordinate Printer
Get-Jobs	MUST forward to <i>all</i> its subordinate Printers
Purge-Jobs	MUST forward to <i>all</i> its subordinate Printers
IPP/1.1 Job operations:	
Send-Document	MUST forward immediately or queue to the appropriate Job in one of its subordinate Printers
Send-URI	MUST forward immediately or queue to the appropriate Job in one of its subordinate Printers
Cancel-Job	MUST forward to the appropriate Job in one of its subordinate Printers
Get-Job-Attributes	MUST forward to the appropriate Job in one of its subordinate Printers, if the non-leaf Printer doesn't know the complete status of the Job object
Hold-Job	MUST forward to the appropriate Job in one of its subordinate Printers
Release-Job	MUST forward to the appropriate Job in one of its subordinate Printers
Restart-Job	MUST forward to the appropriate Job in one of its subordinate Printers

398 **ISSUE 04 : Do we want to define whether the response to the client for Job operations can happen before**
399 **the non-leaf Printer gets the response from its subordinate Printer or MUST the non-leaf Printer wait until**
400 **its gets the response from its subordinate Printer?**

401 The following Job Description attributes are defined to help represent Job relationships for fan-out and
402 forwarding of jobs:

- 403 1. "output-device-assigned" (name(127)) - from [ipp-mod]: This attribute identifies the output device to
404 which the Printer object has assigned this job. If an output device implements an embedded Printer
405 object, the Printer object NEED NOT set this attribute. If a print server implements a Printer object, the
406 value MAY be empty (zero-length string) or not returned until the Printer object assigns an output
407 device to the job. This attribute is particularly useful when a single Printer object supports multiple
408 devices (so called "fan-out").
- 409 2. "original-requesting-user-name" (name(MAX)) - operation attribute containing the user name of the
410 original user, i.e., corresponds to the "requesting-user-name" operation attribute that the original client
411 supplied to the first Printer object.

412 **ISSUE 05 - The "requesting-user-name" operation attribute is the parent Printer's host, not the original**
413 **requesting user, correct?)**

414 **ISSUE 06 - Presumably the "job-originating-user-name" remains as the authenticated original user, not the**
415 **parent Printer's authenticated host, correct?**

416 3 New Operation attributes

417 This section defines the new "printer-message-from-operation" and "job-message-from-operator" operation
418 attributes that set the corresponding Printer and Job Description attributes.

419 3.1 New operation attribute: "printer-message-from-operator" (text(127))

420 Type of registration: attribute

421 Proposed keyword name of this attribute: "printer-message-from-operator"

422 Types of attribute (Operation, Job Template, Job Description, Printer Description): Operation

423 Operations to be used with if the attribute is an operation attribute: See below

424 Object (Job, Printer, etc. if bound to an object): Printer (already in IPP/1.0 and IPP/1.1)

425 Attribute syntax(es) (include 1setOf and range as in Section 4.2): text(127)

426

427 Specification of this attribute (follow the style of IPP Model Section 4.2):

428

429 "printer-message-from-operator" (text(127))

430 The client OPTIONALLY supplies this attribute. The Printer object SHOULD supports this
431 operation attribute if it supports the corresponding Printer Description attribute. The value of this
432 attribute is a message from the operator about the Printer object on which the operator is performing
433 the operation. If supported, the Printer copies the value to the Printer's "printer-message-from-

434 operator" Printer Description attribute (see [ipp-mod] section 4.4.25), automatically sets the value of
435 the Printer's "printer-message-time" with the current value of the Printer's "printer-up-time"
436 attribute, the value of the "printer-message-date-time" with the current value of the Printer's printer-
437 current-date-time" attribute, and the value of the Printer's "printer-message-operation" with the
438 operation-id value of this operation (see [ipp-mod] section 4.4.15).

439

440 If the client omits this attribute, the Printer does not change the value of its "printer-message-from-
441 operator", "printer-message-time", "printer-message-date-time", and "printer-message-operation"
442 Printer Description attributes.

443

444 If the client supplies this attribute with a zero-length text value or with a value consisting solely of
445 white space, the Printer copies that value as any other value to the Printer's "printer-message-from-
446 operator" and sets the "printer-message-time", "printer-message-date-time", and "printer-message-
447 operation" attributes. Supplying such a value is the way that the operator indicates that there is no
448 longer a printer message from the operator (rather than using the "out-of-band" 'no-value' value).

449

450 This operation attribute is defined for use with the following operator operations on the Printer object:

451 Pause-Printer - see [ipp-mod] section 3.2.7

452 Resume-Printer - see [ipp-mod] section 3.2.8

453 Purge-Jobs - see [ipp-mod] section 3.2.9

454 Disable-Printer - see section 8.1.2

455 Enable-Printer - see section 8.1.3

456 Restart-Printer - see section 8.1.4

457 Shutdown-Printer - see section 8.1.5

458

459 The "printer-message-from-operator" operation attribute MUST NOT be supported as an operation attribute
460 for the Set-Printer-Attributes operation. If the operator wants to set the Printer's "printer-message-from-
461 operator" Printer Description attribute when issuing the Set-Printer-Attributes operation, the client supplies
462 the "printer-message-from-operator" with its new value as one of the Printer Description attributes in Group
463 2 in the request. The Printer also updates the Printer's "printer-message-date-time" and "printer-message-
464 operation" Printer Description attributes. If the client does not explicitly supply the "printer-message-from-
465 operator" with its new value, the Printer leaves the value of the Printer's "printer-message-from-operator"
466 Printer Description attribute unchanged.

467 3.2 New operation attribute: "job-message-from-operator" (text(127))

468 Type of registration: attribute

469 Proposed keyword name of this attribute: "job-message-from-operator"

470 Types of attribute (Operation, Job Template, Job Description, Printer Description): Operation

471 Operations to be used with if the attribute is an operation attribute: See below

472 Object (Job, Printer, etc. if bound to an object): Job (already in IPP/1.0 and IPP/1.1)

473 Attribute syntax(es) (include 1setOf and range as in Section 4.2): text(127)

474

475 Specification of this attribute (follow the style of IPP Model Section 4.2):

476

477 "job-message-from-operator" (text(127))

478

479

480

481

482

483

484

485

486

487

488

489

490

491

492

493

494

The client OPTIONALLY supplies this attribute. The Printer object SHOULD support this operation attribute if it supports the corresponding Job Description attribute. The value of this attribute is a message from the operator about the Job object on which the operator has just performed an operation. If supported, the Printer copies the value to the Job's "job-message-from-operator" Job Description attribute (see [ipp-mod] section 4.3.16).

If the client omits this attribute, the Printer does not change the value of its "printer-message-from-operator" Job Description attribute.

If the client supplies this attribute with a zero-length text value or with a value consisting solely of white space, the Printer copies that value as any other value to the job's "job-message-from-operator". Supplying such a value is the way that the operator indicates that there is no longer a job message from the operator (rather than using the "out-of-band" 'no-value' value).

Note: There are no corresponding "job-message-time", "job-message-date-time", and "job-message-operation" Job Description attributes, since the usual lifetime of a job is limited.

495

This operation attribute is defined for use with the following operator operations on the Job object:

496

Cancel-Job - see [ipp-mod] section 3.2.4

497

Hold-Job - see [ipp-mod] section 3.3.5

498

Release-Job - see [ipp-mod] section 3.3.6

499

Restart-Job - see [ipp-mod] section 3.3.7

500

Reprocess-Job - see section 8.2.2

501

Cancel-Current-Job - see section 8.2.3

502

Pause-Current-Job - see section 8.2.4

503

Resume-Job - see section 8.2.5

504

Promote-Job - see section 8.2.6

505

506

The "job-message-from-operator" operation attribute MUST NOT be supported as an operation attribute for the Set-Job-Attributes operation. If the operator wants to set the Job's "job-message-from-operator" Job Description attribute when issuing the Set-Job-Attributes operation, the client supplies the "job-message-from-operator" with its new value as one of the Job Description attributes in Group 2 in the request. Otherwise, the Printer leaves the value of the Job's "job-message-from-operator" Job Description attribute unchanged by not explicitly setting the attribute.

507

508

509

510

511

512

3.3 New operation attribute for Get-Printer-Attributes: "factory-settings" (boolean)

513

Type of registration: attribute

514

Proposed keyword name of this attribute: "factory-settings"

515

Types of attribute (Operation, Job Template, Job Description, Printer Description): Operation

516 Operations to be used with if the attribute is an operation attribute: Get-Printer-Attributes
517 Object (Job, Printer, etc. if bound to an object): N/A
518 Attribute syntax(es) (include 1setOf and range as in Section 4.2): boolean

519
520 Specification of this attribute (follow the style of IPP Model Section 4.2):
521 "factory-settings" (boolean)

522 The client **OPTIONALLY** supplies this attribute. The Printer object **OPTIONALLY** supports this
523 attribute, if it supports the Set-Printer-Attributes operation. If the client omits this attribute or
524 supplies the 'false' value, the Printer returns the current values of the requested attributes that are
525 settable, i.e., the values that have been set by previous Set-Printer-Attributes. If the client supplies
526 the 'true' value, the Printer returns the factory settings, i.e., the inherent values supported by the
527 implementation as shipped from the manufacturer or established at install time. This operation
528 attribute allows an operator to determine which values are supported in an implementation after
529 having modified a settable attribute. Attributes that are not settable are not affected by this
530 operation attribute, so that the Printer returns the same values for non-settable attribute when either
531 the 'true' or 'false' value has been supplied. If this operation attribute is supported, both 'true' and
532 'false' values **MUST** be supported.

533 3.4 New operation attribute for Pause-Printer: "when" (type2 keyword)

534 Type of registration: attribute

535 Proposed keyword name of this attribute: "when"

536 Types of attribute (Operation, Job Template, Job Description, Printer Description): Operation

537 Operations to be used with if the attribute is an operation attribute: Pause-Printer, Shutdown-Printer, and
538 Pause-Current-Job

539 Object (Job, Printer, etc. if bound to an object): N/A

540 Attribute syntax(es) (include 1setOf and range as in Section 4.2): type2 keyword

541
542 Specification of this attribute (follow the style of IPP Model Section 4.2):

543 "when" (type2 keyword)

544 The client **OPTIONALLY** supplies this attribute. The Printer object **OPTIONALLY** supports this
545 attribute, if it supports this operation. The value of this attribute indicates when to pause the printer.
546 If the client omits this attribute, the Printer assumes the 'now' value. The 'now' value is **REQUIRED**
547 to be supported if the "when" attribute is supported; the remaining values are **OPTIONAL**.
548 Note: There is no way to query to see which values of the "when" attribute are supported for this or
549 any other operation. Since this operation is intended for Operators, rather than End-Users, it did not
550 seem necessary to provide the means to query the supported values.

551
552 Standard keyword values are:

553 'now' - pause the Printer immediately, while the current job is processing. See [ipp-mod]
554 section 3.2.7) for the effect on the Printer's "printer-state" and "printer-state-reasons"
555 attributes. Jobs in the 'held' and 'pending' state remain in those states.

556 'after-current-copy' - pause the Printer after the current job finishes printing its current copy.
557 Jobs in the 'held' and 'pending' state remain in those states.

558 'after-current-job' - pause the Printer after the current job finishes printing (all its copies).
 559 Jobs in the 'held' and 'pending' state remain in those states.
 560 'after-all' - pause the Printer after all 'pending' jobs finish printing. Jobs in the 'held' state
 561 remain in the 'held' state.

562 Note: The "when" operation attribute is also defined for use with the Shutdown-Printer (see section 8.1.5)
 563 and the Pause-Current-Job (see section 8.2.4) operations, but with a subset of these values.

564 3.5 Summary of the operation attributes for the Printer operations

565 The following table shows the operation attributes for the Printer operations that a client MAY supply in a
 566 request. Operation parameters and attributes that a client MUST supply are not shown. Also "requesting-
 567 user-name" is not shown, though it is RECOMMENDED that a client supply it in every request.

568 Legend:

569 R - REQUIRED for a Printer to support

570 O - OPTIONAL for a Printer to support; the Printer ignores the attribute if not supported

Operation Attribute	Pause-Printer	Resume-Printer	Purge-Jobs	Get-Printer-Attributes	Set-Printer-Attributes	Enable-Print	Disable-Printer		Restart-Printer		Shut down-Printer
document-format				R	R						
factory-settings				O							
printer-message-from-operator	O	O	O			O	O		O		O
job-type						O	O				
when	O										O
reset-function											
synchronize											O
shutdown-function											R

571 3.6 Summary of the operation attributes for the Job operations

572 The following table shows the operation attributes for the Job operations that a client MAY supply in a
 573 request. Operation attributes that specify the Printer or Job object as the target are shown in the first two
 574 rows, respectively. Other operation attributes and parameters that a client MUST supply are not shown.
 575 Also "requesting-user-name" is not shown, though it is RECOMMENDED that a client supply it in every
 576 request.

577 Legend:

578 R - REQUIRED for a Printer to support

579 O - OPTIONAL for a Printer to support; the Printer ignores the attribute if not supported

Operation Attribute	Cancel-Job	Cancel-Current-Job	Hold-Job	Release-Job		Pause-Current-Job	Resume-Job	Get-Job-Attributes	Set-Job-Attributes	Restart-Job	Reprocess-Job	Promote-Job
printer-uri		R				R						
printer-uri/job-id or job-uri	R		R	R			R	R	R	R	R	R

job-id		R				R						
requested-attributes								R				
back-space												
forward-space												
synchronize						O						
when						O						
job-message-from-operator	O	O	O	O		O	O			O	O	O
message [to-operator]	O		O	O		O	O			O	O	O
job-hold-until			O*	O*							O**	

580 * The Printer MUST support the "job-hold-until" operation attribute if it supports the "job-hold-until" Job
 581 Template attribute.

582 ** The Printer MUST support the "job-hold-until" operation attribute if it supports the Set-Job-Attributes
 583 operation, so that the client can hold the job with the Reprocess-Job operation and the modify the job before
 584 releasing it to be processed.

585 4 New Printer Description Attributes

586 The following new Printer Description attributes are needed to support the new operations defined in this
 587 document.

588 4.1 printer-settable-attributes (1setOf type2 keyword)

589 Type of registration: attribute
 590 Proposed keyword name of this attribute: printer-settable-attributes
 591 Types of attribute (Operation, Job Template, Job Description, Printer Description): Printer Description
 592 Operations to be used with if the attribute is an operation attribute: N/A
 593 Object (Job, Printer, etc. if bound to an object): Printer
 594 Attribute syntax(es) (include 1setOf and range as in Section 4.2): 1setOf type2 keyword
 595 If attribute syntax is 'keyword' or 'enum', is it type2 or type3: type2
 596 If this is a Printer attribute, MAY the value returned depend on "document-format" (See Section 6.2): Yes
 597 If this is a Job Template attribute, how does its specification depend on the value of the "multiple-
 598 document-handling" attribute: N/A
 599 Specification of this attribute (follow the style of IPP Model Section 4.2):

600 4.4.? printer-settable-attributes (1setOf type2 keyword)

601 This READ-ONLY Printer attribute identifies the Printer object attributes that are settable in this
 602 implementation, i.e., that are settable using the Set-Printer-Attributes operations. This attribute MUST be
 603 supported if the Set-Printer-Attributes operations is supported. The Printer MUST reject attempts to set any
 604 Printer attributes that are not in this list, returning the 'client-error-attributes-not-settable' status code (see
 605 section 6.1). The value of this attribute MAY depend on the value of the "document-format" operation
 606 attribute supplied in the Get-Printer-Attributes operation (see [ipp-mod] section 3.2.5.1).

607 4.2 job-settable-attributes (1setOf type2 keyword)

608 Type of registration: attribute

609 Proposed keyword name of this attribute: job-settable-attributes

610 Types of attribute (Operation, Job Template, Job Description, Printer Description): Printer Description

611 Operations to be used with if the attribute is an operation attribute: N/A

612 Object (Job, Printer, etc. if bound to an object): Printer

613 Attribute syntax(es) (include 1setOf and range as in Section 4.2): 1setOf type2 keyword

614 If attribute syntax is 'keyword' or 'enum', is it type2 or type3: type2

615 If this is a Printer attribute, MAY the value returned depend on "document-format" (See Section 6.2): Yes

616 If this is a Job Template attribute, how does its specification depend on the value of the "multiple-
617 document-handling" attribute: N/A

618 Specification of this attribute (follow the style of IPP Model Section 4.2):

619 4.4.? job-settable-attributes (1setOf type2 keyword)

620 This READ-ONLY Printer attribute identifies the Job object attributes that are settable in this
621 implementation, i.e., that are settable using the Set-Job-Attributes operations. This attribute MUST be
622 supported if the Set-Job-Attributes operations is supported. The Printer MUST reject attempts to set any
623 Job attributes that are not in this list, returning the 'client-error-attributes-not-settable' status code (see
624 section 6.1).

625 4.3 printer-controls-other-protocols (boolean)

626 Type of registration: attribute

627 Proposed keyword name of this attribute: printer-controls-other-protocols

628 Types of attribute (Operation, Job Template, Job Description, Printer Description): Printer Description

629 Operations to be used with if the attribute is an operation attribute: N/A

630 Object (Job, Printer, etc. if bound to an object): Printer

631 Attribute syntax(es) (include 1setOf and range as in Section 4.2): boolean

632 If attribute syntax is 'keyword' or 'enum', is it type2 or type3: N/A

633 If this is a Printer attribute, MAY the value returned depend on "document-format" (See Section 6.2): No

634 If this is a Job Template attribute, how does its specification depend on the value of the "multiple-
635 document-handling" attribute: N/A

636 Specification of this attribute (follow the style of IPP Model Section 4.2):

637 4.4.? printer-controls-other-protocols (boolean)

638 This Printer attribute indicates whether all IPP printer and job operations, such as Disable-Printer, Pause-
639 Printer, Cancel-Job, etc., affect non-IPP protocols that may be supported. It is RECOMMENDED that IPP
640 control other non-IPP protocols. However, this attribute permits an implementation to indicate explicitly
641 whether it does affect other protocols or not.

642 A 'false' value indicates that IPP operations only affect jobs submitted by the IPP Protocol. For example, a
643 'true' value indicates that a Disable-Printer operation prevents all protocols from submitting jobs, not just
644 the IPP protocol. A 'true' value indicates that the Pause-Printer operation would pause the current job, no

645 matter what job submission protocol had submitted it. A 'true' value indicates that the Cancel-Job operation
646 will cancel the specified job even if it was submitted using a different job submission protocol, such as
647 LPR.

648 As with any Printer Description attribute that this specification does not list as READ-ONLY, an
649 implementation MAY allow a client to change the value of this attribute using Set-Printer-Attributes,
650 thereby changing the way that the IPP operations affect other non-IPP protocols. An implementation MAY
651 also support other means to change the value of this attribute, such as via the console or at installation time.

652 4.4 printer-message-time (integer(MIN:MAX))

653 Type of registration: attribute

654 Proposed keyword name of this attribute: printer-message-time

655 Types of attribute (Operation, Job Template, Job Description, Printer Description): Printer Description

656 Operations to be used with if the attribute is an operation attribute: N/A

657 Object (Job, Printer, etc. if bound to an object): Printer

658 Attribute syntax(es) (include 1setOf and range as in Section 4.2): integer(MIN:MAX)

659 If attribute syntax is 'keyword' or 'enum', is it type2 or type3: N/A

660 If this is a Printer attribute, MAY the value returned depend on "document-format" (See Section 6.2): No

661 If this is a Job Template attribute, how does its specification depend on the value of the "multiple-
662 document-handling" attribute: N/A

663 Specification of this attribute (follow the style of IPP Model Section 4.2):

664 4.4.? printer-message-time (integer(MIN:MAX))

665 This READ-ONLY Printer Description attribute contains the time that the Printer's "printer-message-from-
666 operator" was changed by the operator using any operation where the client supplied the "printer-message-
667 from-operator" operation attribute (see section 3.1) or was explicitly set using the Set-Printer-Attributes
668 operation (see section 8.1.1). This attribute allows the users to know when the "printer-message-from-
669 operator" attribute was last set.

670 The Printer sets the value of this attribute by copying the value of the Printer's "printer-up-time" attribute
671 (see [ipp-mod] section 4.3.14). If the Printer resets its "printer-up-time" attribute to 1 on power-up, then it
672 MUST change the value of the "printer-message-time" to 0 or a negative number as specified in [ipp-mod]
673 section 4.3.14.

674 Note: This attribute helps users better understand the context for the "printer-message-from-operator"
675 message.

676 4.5 printer-message-date-time (dateTime)

677 Type of registration: attribute

678 Proposed keyword name of this attribute: printer-message-date-time

679 Types of attribute (Operation, Job Template, Job Description, Printer Description): Printer Description

680 Operations to be used with if the attribute is an operation attribute: N/A

681 Object (Job, Printer, etc. if bound to an object): Printer

682 Attribute syntax(es) (include 1setOf and range as in Section 4.2): dateTime
683 If attribute syntax is 'keyword' or 'enum', is it type2 or type3: N/A
684 If this is a Printer attribute, MAY the value returned depend on "document-format" (See Section 6.2): No
685 If this is a Job Template attribute, how does its specification depend on the value of the "multiple-
686 document-handling" attribute: N/A
687 Specification of this attribute (follow the style of IPP Model Section 4.2):
688 4.4.? printer-message-date-time (dateTime)

689 This READ-ONLY Printer Description attribute contains the date and time that the Printer's "printer-
690 message-from-operator" was changed by the operator using any operation where the client supplied the
691 "printer-message-from-operator" operation attribute (see section 3.1) or was explicitly set using the Set-
692 Printer-Attributes operation (see section 8.1.1). This attribute allows the users to know when the "printer-
693 message-from-operator" attribute was last set. This attribute MUST be supported if the Printer supports
694 both the "printer-message-from-operator" and the "printer-current-date-time" attributes.

695 Note: This attribute helps users better understand the context for the "printer-message-from-operator"
696 message.

697 4.6 printer-message-operation (type2 keyword)

698 Type of registration: attribute
699 Proposed keyword name of this attribute: printer-message-operation
700 Types of attribute (Operation, Job Template, Job Description, Printer Description): Printer Description
701 Operations to be used with if the attribute is an operation attribute: N/A
702 Object (Job, Printer, etc. if bound to an object): Printer
703 Attribute syntax(es) (include 1setOf and range as in Section 4.2): type2 enum
704 If attribute syntax is 'keyword' or 'enum', is it type2 or type3: type2
705 If this is a Printer attribute, MAY the value returned depend on "document-format" (See Section 6.2): No
706 If this is a Job Template attribute, how does its specification depend on the value of the "multiple-
707 document-handling" attribute: N/A
708 Specification of this attribute (follow the style of IPP Model Section 4.2):
709 4.4.? printer-message-operation (type2 enum)

710 This READ-ONLY Printer Description attribute contains the operation that was used to changed the
711 Printer's "printer-message-from-operator" by the operator using any operation where the client supplied the
712 "printer-message-from-operator" operation attribute (see section 3.1) or explicitly set using the Set-Printer-
713 Attributes operation (see section 8.1.1). This attribute allows the users to know which operation was used
714 to change the "printer-message-from-operator" attribute when it was last set.

715 Note: This attribute helps users better understand the context for the "printer-message-from-operator".

716 4.7 subordinate-printers-supported (1setOf uri)

717 This Printer attribute is REQUIRED if an implementation supports subordinate Printers (see section 2.2)
718 and contains the URIs of the immediate subordinate Printer object(s) associated with this Printer object.

719 The precise format of the subordinate Printer URIs is implementation dependent (see section 2.2).

720 If the Printer object does not have an associated Device object (see [ipp-set3]), the value of the subordinate
721 Printer object's "printer-name" MAY be used to populate the Job object's "output-device-assigned"
722 attribute (see [ipp-mod] section 4.3.13). The "output-device-assigned" Job attribute identifies the output
723 device to which the Printer object has assigned a job, for example, when a single Printer object is
724 supporting fan-out.

725 5 Additional values for "printer-state-reasons" and "job-state-reasons" attributes

726 The following values are added to the "printer-state-reasons" and "job-state-reasons" for use with the
727 operations defined in this document.

728 5.1 Value for "printer-state-reasons": 'standby'

729 Type of registration: type2 keyword attribute value

730 Name of attribute to which this keyword specification is to be added: printer-state-reasons

731 Proposed keyword name of this keyword value: standby

732 Specification of this keyword value (follow the style of IPP Model Section 4.1.2.3):

733 'standby': The Printer has been shutdown in standby mode. Only Restart-Printer and Get-Printer-
734 Attributes operations are accepted in this state; all other operations are rejected with the 'server-
735 error-printer-is-in-standby-mode'.

736 5.2 Value for "job-state-reasons": 'job-paused'

737 Type of registration: type2 keyword attribute value

738 Name of attribute to which this keyword specification is to be added: job-state-reasons

739 Proposed keyword name of this keyword value: job-paused

740 Specification of this keyword value (follow the style of IPP Model Section 4.1.2.3):

741 'job-paused': The job has been paused while processing using the Pause-Current-Job operations and
742 other jobs can be processed on the Printer. The Job can be resumed using the Resume-Job operation
743 which removes this value.
744

745 6 New status codes

746 This section defines new status codes used by the operations defined in this document.

747 6.1 New status code: 'client-error-attributes-not-settable'

748 Type of registration: status code

749 Keyword symbolic name of this status code value: 'client-error-attributes-not-settable'

750 Numeric value (to be assigned by the IPP Designated Expert in consultation with IANA):

751 Operations that this status code may be used with: Set-Printer-Attributes, Set-Job-Attributes

752 Specification of this status code (follow the style of IPP Model Section 13 APPENDIX B: Status Codes
753 and Suggested Status Code Messages):

754 13.1.4.20 client-error-attributes-not-settable (0x0413)

755 In a Set-Printer-Attributes or Set-Job-Attributes request, if the Printer object does not support one or more
756 attributes as settable, the Printer object MUST return this status code. The Printer object MUST also return
757 in the Unsupported Attributes Group all the attributes and/or values supplied by the client that are not
758 settable. See [ipp-mod] section 3.1.7. For example, if the request indicates 'job-state', all implementations
759 MUST reject the request. As another example, if the request indicates an attribute that is supported, but not
760 settable by this implementation, such as, say, "printer-name", the implementation rejects the request.

761 6.2 New status code: 'server-error-printer-is-in-standby-mode'

762 Type of registration: status code

763 Keyword symbolic name of this status code value: 'server-error-printer-is-in-standby-mode'

764 Numeric value (to be assigned by the IPP Designated Expert in consultation with IANA):

765 Operations that this status code may be used with: Shutdown-Printer

766 Specification of this status code (follow the style of IPP Model Section 13 APPENDIX B: Status Codes
767 and Suggested Status Code Messages):

768 13.1.5.8 server-error-printer-is-in-standby-mode

769 The Printer has been shutdown and is only accepting the Restart-Printer (see section 8.1.4) and Get-Printer-
770 Attributes operations. An operator can perform the Restart-Printer operation to allow the Printer to accept
771 other operations.

772 7 New out-of-band values

773 This section defines additional out-of-band values that can be used with any attribute in principle. See the
774 beginning of [ipp-mod] section 4.1.

775 7.1 'not-settable' out of band value

776 The 'not-settable' out of band value is used by the IPP Printer in a Set-Job-Attributes or Set-Printer-
777 Attributes response to indicate an attribute that was supplied, but is not settable in that implementation or as
778 defined by the policy for that system, because it is not in the "job-settable-attributes" on the one hand, or the
779 "interpreter-settable-attributes" or "printer-settable-attributes", on the other hand.

780 8 Summary of Set 2 operations and Operation-Id Assignments

781 The Set 2 operations are summarized in the following table:

Operation Name	Operation-Id	Brief description
Set-Printer-Attributes	0x??	Sets attribute values of the target Printer object
Enable-Printer	0x??	Allows the target Printer to accept create job operations
Disable-Printer	0x??	Prevents the target Printer from accepting create job operations
Restart-Printer	0x??	Restarts the target Printer from a standby shutdown mode
Shutdown-Printer	0x??	Shuts down the target Printer in several ways
Set-Job-Attributes	0x??	Sets attribute values of the target Job object
Reprocess-Job	0x??	Creates a copy of a completed target job with a new Job ID and processes it
Cancel-Current-Job	0x??	Cancels the current job on the target Printer or the specified job if it is the current job
Pause-Current-Job	0x??	Pauses the current processing job on the target Printer or the specified job if it is the current job, allowing other jobs to be processed instead
Resume-Job	0x??	Resume the paused target job
Promote-Job	0x??	Promote the pending target job to be next after the current job(s) complete

782 All of the operations in this registration proposal specification are OPTIONAL for an IPP object to support.
 783 Unless the specification of an OPTIONAL operation requires support of another OPTIONAL operation,
 784 conforming implementations may support any combination of these operations.

785

786 8.1 Printer Operations

787 All Printer operations are directed at Printer objects. A client **MUST** always supply the "printer-uri"
788 operation attribute in order to identify the correct target of the operation. These descriptions assume all of
789 the common semantics of IPP/1.1 Model and Semantics document [ipp-mod] section 3.1.

790 8.1.1 Set-Printer-Attributes Operation

791 Type of registration: operation

792 Proposed name of this operation: Set-Printer-Attributes

793 Object Target: Printer

794 Specification of this operation:

795 This **OPTIONAL** operation allows a client to set the values of the attributes of a Printer object. In the
796 request, the client supplies the set of Printer attribute names and values that are to be set. In the response,
797 the Printer object returns success or rejects the request with indications of which attribute or attributes
798 could not be set.

799 How the Printer object validates the client-supplied attributes in the Set-Printer-Attributes request is
800 implementation-dependent, since there are no corresponding Printer attributes that specify the allowed
801 values that may be set on the Printer object.

802 The Printer **MUST** accept this operation in any state, i.e., for any of the values of the Printer object's
803 "printer-state" attribute.

804 8.1.1.1 Settable and READ-ONLY Printer Description attributes

805 If the Printer supports the "printer-message-from-operator" Printer Description attribute (see [ipp-mod]
806 section 4.4.25) and the client explicitly supplies a new value for the "printer-message-from-operator" in the
807 request, then the Printer **MUST** set the "printer-message-from-operator" Printer attribute to this new value
808 and **MUST** also set the "printer-message-time", "printer-message-date-time", and "printer-message-
809 operation" attributes, if supported (see sections 4.4, 4.5, and 4.6).

810 If the Printer supports the Set-Printer-Attributes operation, then it **SHOULD** support setting of:

- 811 all Job Template Default ("xxx-default") attributes
- 812 all Job Template Supported ("xxx-supported") attributes
- 813 all Job Template Ready ("xxx-ready") attributes

814 that the implementation supports (see [ipp-mod] section 4.2 and extensions).

815 The following Printer Description attributes (see [ipp-mod] section 4.4) **MUST NOT** be settable, i.e., they
816 are **READ-ONLY**:

817 printer-state
818 printer-state-reasons
819 printer-state-message
820 printer-is-accepting-jobs - see Enable-Printer/Disable-Printer
821 queued-job-count
822 printer-message-time - see Set-Printer-Attributes when setting "printer-message-from-operator"
823 printer-message-date-time - see Set-Printer-Attributes when setting "printer-message-from-operator"
824 printer-message-operation - see Set-Printer-Attributes when setting "printer-message-from-operator"
825 printer-up-time

826 The remaining Printer Description attributes MAY be settable using the Set-Printer-Attributes operation,
827 depending on implementation. If "xxx-supported" Printer Description attribute are settable, then they
828 MUST affect the behavior of the implementation. If they are READ-ONLY then they reflect the
829 implementation and cannot be changed using the Set-Printer-Attributes operation. Consider the following
830 examples:

831 For example, if the "operations-supported" Printer Description attribute (see [ipp-mod] section
832 4.4.15) is settable, then changing its value MUST affect the operations that the implementation
833 accepts or rejects. Such an implementation will need to be able to reject values for operations that it
834 contains no code support for.

835 As another example, if the "ipp-versions-supported" Printer Description attribute (see [ipp-mod]
836 section 4.4.14) is settable, then changing its value MUST affect the protocol versions that are
837 accepted or rejected. Such an implementation will need to be able to reject values for operations
838 that it contains no code support for.

839 See the "factory-settings" operation attribute (see section 3.3) for a way to query the implementation
840 supported values using the Get-Printer-Attributes operation. See the "reset-function" operation attribute of
841 the Reset-Device operation (see [ipp-set3]) for a way to restore the values of the Device object to the
842 factory settings.

843 **ISSUE 07 - Ok not to have a way to reset the values of the Printer object to the factory settings, but only**
844 **have a way to reset the factory default settings for the Device object?**

845 *Access Rights:* Authentication and access control (see [ipp-mod] sections 1, 8.3, and 8.5) apply to this
846 operation.

847 Most Printer attributes will require administrator privileges to set, such as "xxx-supported", while some will
848 require operator privileges only, such as "media-ready" and "printer-message-from-operator". Which
849 attributes require which privileges depends on implementation and MAY depend on site policy.

850

851 8.1.1.2 Set-Printer-Attributes Request

852 The following sets of attributes are part of the Set-Printer-Attributes Request:

853 Group 1: Operation Attributes

854 Natural Language and Character Set:

855 The "attributes-charset" and "attributes-natural-language" attributes as described in [ipp-mod]
856 section 3.1.4.1.

857

858 Target:

859 The "printer-uri" (uri) operation attribute which is the target for this operation as described in [ipp-
860 mod] section 3.1.5.

861

862 Requesting User Name:

863 The "requesting-user-name" (name(MAX)) attribute SHOULD be supplied by the client as
864 described in [ipp-mod] section 8.3.

865

866

867 "document-format" (mimeMediaType):

868 The client SHOULD supply this attribute. The Printer object MUST support this attribute. This
869 attribute is useful for a client to select the Interpreter object to which the attribute modification
870 should be applied. Each Printer object is modeled to contain one or more Interpreter objects. Those
871 Printer attributes whose values vary from Interpreter to Interpreter, are modeled as Interpreter
872 objects, while those that do not are Printer object attributes. Thus the target of a Get-Printer-
873 Attributes or Set-Printer-Attributes operation is either the Printer object or the Interpreter object
874 identified by the "document-format" operation attribute supplied by the client. Except for Get-
875 Printer-Attributes and Set-Printer-Attributes, there are no other operations with the Interpreter object
876 as a target. See [ipp-mod] section 3.2.5.1 "Get-Printer-Attributes Request".

877

878 If a client wants to set an attribute of all of the Interpreter objects to the same value, it can query the
879 Printer's "document-format-supported" Printer Description attribute and perform separate Set-
880 Printer-Attributes for each document format supported.

881

882 If the Printer object does not distinguish between different sets of supported values for each
883 different document format when validating jobs in the create and Validate-Job operations, it MUST
884 NOT distinguish between different document formats in the Set-Printer-Attributes operation. If the
885 Printer object does distinguish between different sets of supported values for each different
886 document format specified by the client, this specialization applies only to the same Printer
887 attributes as the Get-Printer-Attributes operation (see [ipp-mod] section 3.2.5.1).

888

889 If the client omits this "document-format" operation attribute, the Printer object MUST respond as if
890 the attribute had been supplied with the value of the Printer object's "document-format-default"

891 attribute. It is recommended that the client always supply a value for "document-format", since the
892 Printer object's "document-format-default" may be 'application/octet-stream', in which case the set
893 attributes and values are for the union of the document formats that the Printer can automatically
894 sense. For more details, see the description of the 'mimeType' attribute syntax in [ipp-mod]
895 section 4.1.9.

896

897 If the client supplies a value for the "document-format" Operation attribute that is not supported by
898 the Printer, i.e., is not among the values of the Printer object's "document-format-supported"
899 attribute, the Printer object MUST reject the operation and return the 'client-error-document-format-
900 not-supported' status code.

901

902 Group 2: Printer Attributes

903 The client MUST supply a set of Printer attributes as defined in [ipp-mod] section 4.2 Job Template
904 Attributes ("xxx-default", "xxx-supported", and "xxx-ready" attributes) and section 4.4 Printer
905 Description Attributes. Each Printer attribute supplied in Group 2 replaces the value(s) of the
906 corresponding Printer attribute on the target Printer object. If a Printer object attribute had not been
907 configured yet and so had the 'no-value' out-of-band value (see [ipp-mod] 4.1), the supplied value(s)
908 replace the 'no-value' value. For attributes that can have multiple values (1setOf), all values
909 supplied by the client replace all values of the corresponding Printer object attribute.

910

911 8.1.1.3 Set-Printer-Attributes Response

912 The Printer object returns the following sets of attributes as part of the Get-Printer-Attributes Response:

913 Group 1: Operation Attributes

914 Status Message:

915 In addition to the REQUIRED status code returned in every response, the response OPTIONALLY
916 includes a "status-message" (text(255)) and/or a "detailed-status-message" (text(MAX)) operation
917 attribute as described in [ipp-mod] sections 13 and 3.1.6.

918

919 Natural Language and Character Set:

920 The "attributes-charset" and "attributes-natural-language" attributes as described in [ipp-mod]
921 section 3.1.4.2.

922

923 Group 2: Unsupported Attributes

924 See [ipp-mod] section 3.1.7 for details on returning Unsupported Attributes.

925

926 In the case of attributes that are supported, but are not settable by the implementation, i.e., are not
927 among the values of the Printer's "settable-attributes" Printer Description attribute (see section 4.1),
928 the Printer object returns the client-supplied attribute(s) with a substituted value of 'not-supported'
929 (same out-of-band value as for attributes that are not supported). This value's syntax type is "out-of-
930 band" and its encoding is defined by special rules for "out-of-band" values in the "Encoding and

931 Transport" document [IPP-PRO]. Its value indicates that the attribute is either not settable or is not
932 supported at all.

933

934 8.1.2 Disable-Printer Operation

935 Type of registration: operation

936 Proposed name of this operation: Disable-Printer

937 Object Target: Printer

938 Specification of this operation:

939 This OPTIONAL operation allows a client to stop the Printer object from accepting jobs, i.e., cause the
940 Printer to reject subsequent create job operations (Print-Job, Print-URI, and Create-Job operation) and
941 return the 'server-error-not-accepting-jobs' status code. The Printer still accepts all other operations. All
942 previously submitted Jobs and currently processing Jobs continue unaffected. The Printer sets the value of
943 its "printer-is-accepting-jobs" READ-ONLY Printer Description attribute to 'false' (see [ipp-mod] section
944 4.4.20), no matter what the previous value was. This operation has no immediate effect on the Printer's
945 "printer-state" and "printer-state-reasons" attributes.

946 Note: Use the Enable-Printer operation (section 8.1.3) to enable a Printer to accept Jobs again.

947 If the Disable-Printer operation is supported, then the Enable-Printer operation MUST be supported, and
948 vice-versa.

949 Note: Use the Enable-Printer and Disable-Printer operations to allow or prevent input to a Printer. Use the
950 Pause-Printer and Resume-Printer operations to prevent or allow output from the Printer.

951 Whether or not the Disable-Printer operation stops jobs that are submitted using job submission protocols
952 other than IPP, depends on implementation, i.e., on whether the IPP protocol is being used as a universal
953 management protocol or just to manage IPP jobs, respectively. See "printer-controls-other-protocols"
954 (section 4.3).

955 *Access Rights:* Authentication and access control (see [ipp-mod] sections 1, 8.3, and 8.5) apply to this
956 operation.

957 The Disable-Printer Request and Disable-Printer Response have the same attribute groups and attributes as
958 the Resume-Printer operation (see [ipp-mod] sections 3.2.7.1 and 3.2.7.2), including the new "printer-
959 message-from-operator" operation attribute (see section 3.1), and with the addition of the following Group
960 1 operation attribute in the request:

961 "job-type" (type2 keyword):

962 The client OPTIONALLY supplies this attribute. The Printer object OPTIONALLY supports this
963 attribute. The value of this attribute indicates the type of job to be disabled. If the client omits this
964 attribute, the Printer assumes the 'network-jobs' value.

965 Standard keyword values are:

966 'network-jobs' - disable jobs submitted using the create job operations.

967 'walk-up-jobs' - disable jobs submitted locally, such as walkup copy jobs

968 'all-jobs' - disable all type of jobs

970

971 8.1.3 Enable-Printer Operation

972 Type of registration: operation

973 Proposed name of this operation: Enable-Printer

974 Object Target: Printer

975 Specification of this operation:

976 This OPTIONAL operation allows a client to start the Printer object accepting jobs, i.e., cause the Printer to
977 accept subsequent create job operations (Print-Job, Print-URI, and Create-Job operation). The Printer still
978 accepts all other operations. All previously submitted Jobs and currently processing Jobs continue
979 unaffected. The Printer sets the value of its "printer-is-accepting-jobs" READ-ONLY Printer Description
980 attribute to 'true' (see [ipp-mod] section 4.4.20), no matter what the previous value was. This operation has
981 no immediate effect on the Printer's "printer-state" and "printer-state-reasons" attributes.

982 Note: Use the Disable-Printer operation (section 8.1.2) to stop a Printer from accepting Jobs.

983 If the Enable-Printer operation is supported, then the Disable-Printer operation MUST be supported, and
984 vice-versa.

985 Note: Use the Enable-Printer and Disable-Printer operations to allow or prevent input to a Printer. Use the
986 Pause-Printer and Resume-Printer operations to prevent or allow output from the Printer.

987 Whether or not the Enable-Printer operation allows acceptance of jobs that are submitted using job
988 submission protocols other than IPP, depends on implementation, i.e., on whether the IPP protocol is being
989 used as a universal management protocol or just to manage IPP jobs, respectively. See "printer-controls-
990 other-protocols" (section 4.3).

991 *Access Rights:* Authentication and access control (see [ipp-mod] sections 1, 8.3, and 8.5) apply to this
992 operation.

993 The Enable-Printer Request and Enable-Printer Response have the same attribute groups and attributes as
994 the Resume-Printer operation (see [ipp-mod] sections 3.2.8.1 and 3.2.8.2), including the new "printer-
995 message-from-operator" operation attribute (see section 3.1), and with the addition of the following Group
996 1 operation attribute in the request:

997 "job-type" (type2 keyword):

998 The client OPTIONALLY supplies this attribute. The Printer object OPTIONALLY supports this
999 attribute. The value of this attribute indicates the type of job to be enabled. If the client omits this
1000 attribute, the Printer assumes the 'network-jobs' value.

1001

1002 Standard keyword values are:

1003 'network-jobs' - enable jobs submitted using the create job operations.

1004 'walk-up-jobs' - enable jobs submitted locally, such as walkup copy jobs

1005 'all-jobs' - enable all types of jobs

1006 8.1.4 Restart-Printer operation

1007 Type of registration: operation

1008 Proposed name of this operation: Restart-Printer

1009 Object Target: Printer

1010 Specification of this operation:

1011 This OPTIONAL operation allows a client to restart a Printer that has previously been shutdown in standby
 1012 mode (see section 8.1.5). Standby mode is indicated by the Printer's "printer-state" being 'stopped' and its
 1013 "printer-state-reasons" including the 'standby' and 'paused' values. If the Printer is not in standby mode, the
 1014 Printer MUST reject this operation and return the 'client-error-not-possible' status code.

1015 **ISSUE 08: What state does the Printer comes back up on Restart-Printer and how can the client control?**
 1016 **Possible alternatives:**

1017 a. Restart-Printer always brings the Printer up Disabled ("printer-is-accepting-jobs" = 'false') and
 1018 Paused ("printer-state" = 'stopped', and "printer-state-reasons" = 'paused') which is the state that
 1019 Shutdown-Printer leaves the Printer in. Then the operator issues Enable-Printer and Resume-Printer
 1020 when want to restore normal operation. The client can automatically issues these addition 2
 1021 operations depending on GUI options. Advantages: This is the simplest to implement, allows new
 1022 states to be added without changing the Restart-Printer operation, and can have the same GUI
 1023 interface as b:

1024 b. Add a REQUIRED operation attribute to Restart-Printer, something like "printer-condition" with
 1025 values: 'disabled-and-paused', 'enabled-and-paused', and 'enabled-and-idle'.

1026 **DENVER MEETING>** There was significant confusion as to the meaning of shutdown. If a shutdown
 1027 operation halts communications to the printer a restart is not possible. It was agreed to include restart
 1028 attributes 'restart-to-standby' (requires a two step process), 'restart-fully', and 'restart-sync'.

1029 **ACTION ITEM (Harry Lewis):** make a complete proposal and submit for approval.

1030 If the Restart-Printer operation is supported, then the Shutdown-Printer operation MUST be supported,
 1031 since the Restart-Printer operation is meaningful only after a Shutdown-Printer operation has been
 1032 performed. However, if the Shutdown-Printer operation is supported, the Restart-Printer NEED NOT be
 1033 supported.

1034 **Issue 09: Why? This is backward, if you ask me (HRL).**

1035 **Denver meeting>** Consider "shutdown-attributes" similar to Windows "shutdown". Like:

- 1036 – Completely power off (walk to printer to bring it back up)
- 1037 – Power off but listen for "restart" - shutdown to standby

1038 **Denver meeting>** Also consider restart attributes.

- 1039 – Restart to Standby (disabled and paused) (two step bring up)
- 1040 – Restart (fully).
- 1041 – Restart sych

1042 *Access Rights*: Authentication and access control (see [ipp-mod] sections 1, 8.3, and 8.5) apply to this
1043 operation.

1044 The Restart-Printer Request and Restart-Printer Response have the same attribute groups and attributes as
1045 the Resume-Printer operation (see [ipp-mod] sections 3.2.8.1 and 3.2.8.2), including the new "printer-
1046 message-from-operator" operation attribute (see section 3.1) and the following Group 1 operation attribute:

1047

1048 8.1.5 Shutdown-Printer Operation

1049 Type of registration: operation

1050 Proposed name of this operation: Shutdown-Printer

1051 Object Target: Printer

1052 Specification of this operation:

1053 This OPTIONAL operation allows a client to shutdown a Printer, i.e., stop processing jobs and power off in
1054 some implementation-dependent manner. The purpose of Shutdown-Printer is to shutdown the Printer for
1055 an extended period, not to reset the device(s) or modify a Printer attribute. See Reset-Device [ipp-set3] for
1056 the way to reset the device(s). See the Disable-Printer operation (section 8.1.2) for a way for the client to
1057 stop the Printer from accepting Job Creation requests without stopping processing or shutting down.

1058 The Printer is disabled immediately (see the Disable-Printer operation in section 8.1.2). The Printer adds
1059 the 'shutdown' value (see [ipp-mod] section 4.4.11) to its "printer-state-reasons" Printer Description
1060 attribute. The "when" operation attribute specifies how much processing occurs before the Printer is paused
1061 (see [ipp-mod] section 3.2.7) and the shutdown is complete. All other requests continue to be accepted
1062 until the printer is powered down.

1063 ISSUE 10 - Need to look at life cycle of the Printer versus standby/power-down and the other operations
1064 that can be accepted. There can be appreciable time between acceptance of this operation and when the
1065 final state of the printer, either standby or powered down is reached. Is it ok for non-submission operations
1066 to continue to be accepted during this time? May need 'moving-to-shutdown'. What about 'moving-to-
1067 standby'?

1068 TH> Add 'moving-to-shutdown' which the Shutdown-Printer sets
1069 immediately (analogous to 'moving-to-paused'). Then the 'shutdown'
1070 values means that the shutdown has completed (and is only meaningful to
1071 a server implementation that hosts the Printer object). Thus the server
1072 can still respond to a Get-Printer-Attributes operation after the
1073 Printer is shutdown as stated in IPP/1.1.

1074
1075 HRL> Is this granularity really achievable enough of a wide enough
1076 variety of environments to be reliable or, in reality, will this be
1077 implementation dependent?

1078 Whether or not the Shutdown-Printer operation affects jobs that were submitted to the device using job
1079 submission protocols other than IPP, depends on implementation, i.e., on whether the IPP protocol is being
1080 used as a universal management protocol or just to manage IPP jobs, respectively. See "printer-controls-
1081 other-protocols" (section 4.3).

1082 The Printer object MUST accept this operation in any state and transition the Printer object to the 'idle'
1083 state.

1084 *Access Rights:* Authentication and access control (see [ipp-mod] sections 1, 8.3, and 8.5) apply to this
1085 operation.

1086 The Shutdown-Printer Request and Shutdown-Printer Response have the same attribute groups and
1087 attributes as the Pause-Printer operation (see [ipp-mod] sections 3.2.7.1 and 3.2.7.2), including the new

1088 "printer-message-from-operator" operation attribute (see section 3.1), and with the addition of the following
1089 Group 1 operation attributes in the request:

1090 "when" (type2 keyword)

1091 The client **OPTIONALLY** supplies this attribute. The Printer object **OPTIONALLY** supports this
1092 attribute, if it supports this operation. The value of this attribute indicates when to pause the printer.
1093 If the client omits this attribute, the Printer assumes the 'after-current-job' value. The 'after-current-
1094 job' value is **REQUIRED** to be supported if the "when" attribute is supported; the remaining values
1095 are **OPTIONAL**.

1096 Note: There is no way to query to see which values of the "when" attribute are supported for this or
1097 any other operation. Since this operation is intended for Operators, rather than End-Users, it did not
1098 seem necessary to provide the means to query the supported values.

1099
1100 Standard keyword values are:

1101 'now' - cancel the currently printing job(s) and shutdown the Printer. Jobs in the 'held' and
1102 'pending' state remain in those states.

1103 'after-current-job' - shutdown the Printer after the current job finishes printing (all its copies).
1104 Jobs in the 'held' and 'pending' state remain in those states.

1105 'after-all' - shutdown the Printer after all 'pending' jobs finish printing. Jobs in the 'held' state
1106 remain in the 'held' state.

1107 **ISSUE 11 - Ok to remove the 'after-current-copy' value from Shutdown-Printer?**

1108
1109 **ISSUE 12 - Ok to have removed the "shutdown-function" operation attribute with values**
1110 **'stand-by' vs. 'power-off' Shutdown-Printer on the grounds that for the Printer object**
1111 **they have no meaning. Power-off is for the Shutdown-Device operation.**

1112 "synchronize" (boolean)

1113 The client **OPTIONALLY** supplies this attribute. The Printer object **OPTIONALLY** supports this
1114 attribute. This attribute indicates whether or not the printer is to synchronize the checkpoint data for
1115 the current job ("when" = 'now') with the pages that have actually printed. If the value of the "when"
1116 attribute is not 'now' or the "when" attribute is not supplied, then the "synchronize" attribute has no
1117 meaning and the Printer **MUST** ignore it. If this attribute is supported, then a value of 'true' implies
1118 that the Printer will be able to resume the job at the point of synchronization when the Printer is
1119 restarted. If the implementation does not support resuming a job (either automatically or with the
1120 Resume-Job operation) after a Shutdown-Printer with "when" = 'now', then it does not implement
1121 this attribute. In this case, check-pointing implies that the job may be resumed in the future, exactly
1122 from the point and in the state and resource context from which it left off.

1123
1124
1125 If the Printer supports this attribute but the client does not supply it, the Printer is assumed to
1126 perform synchronization ('true' behavior). If the Printer does not support this attribute, the Printer is
1127 assumed to not synchronize ('false' behavior).

1128
1129
1130 **ISSUE 13: Is the current job automatically restarted when the Printer is restarted? Or does some**
1131 **client have to issue a Restart-Job operation?**

1132

1133 8.2 Job Operations

1134 All Job operations are directed at Job objects. A client **MUST** always supply some means of identifying the
1135 Job object in order to identify the correct target of the operation. That job identification **MAY** either be a
1136 single Job URI or a combination of a Printer URI with a Job ID. The IPP object implementation **MUST**
1137 support both forms of identification for every job.

1138 8.2.1 Set-Job-Attributes

1139 Type of registration: operation

1140 Proposed name of this operation: Set-Job-Attributes

1141 Object Target: Job

1142 Specification of this operation:

1143 This **OPTIONAL** operation allows a client to set the values of the attributes of a Job object. In the request,
1144 the client supplies the set of Job attribute names and values that are to be set. In the response, the IPP
1145 object returns success or rejects the request with indications of which attribute or attributes could not be set.

1146 This operation is almost identical to the Set-Printer-Attributes operation (see section 8.1.1). The only
1147 differences are that the Set-Job-Attributes operation is directed at a Job object rather than a Printer object,
1148 there is no "document-format" operation attribute used when setting a Job object, and the validation is the
1149 same as the create job operations, i.e., depends on the "xxx-supported" Printer Description attributes.

1150 The validation of the Set-Job-Attributes request is performed as if the job had been submitted originally
1151 with the new values and with "ipp-attribute-fidelity" set to 'true', i.e., all modified attributes **MUST** be
1152 supported along with the attributes not modified. If such a create job operation would have been accepted,
1153 then the Set-Job-Attributes **MUST** be accepted. If such a create job operation would have been rejected,
1154 then the Set-Job-Attributes **MUST** be rejected and the Job **MUST** be unchanged.

1155 The IPP object **MUST** accept or reject the request based on the job's current state and transition the job to
1156 the indicated new state as follows:

Current "job-state"	New "job-state"	IPP object's response status code and action:
'pending'	'pending'	'successful-ok'
'pending'	'pending-held'	'successful-ok' - needed resources are not ready
'pending-held'	'pending-held'	'successful-ok'
'pending-held'	'pending'	'successful-ok' - needed resources are ready
'processing'	'processing'	'successful-ok' or 'client-error-not-possible' depending on the attributes being set, whether the job has started marking media, and/or implementation
'processing-stopped'	'processing-stopped'	'successful-ok' or 'client-error-not-possible' depending on the attributes being set, whether the job has started marking media, and/or implementation
'completed'	'completed'	'client-error-not-possible'
'canceled'	'canceled'	'client-error-not-possible'
'aborted'	'aborted'	'client-error-not-possible'

1157 8.2.1.1 Settable and READ-ONLY Job Description attributes

1158 If the Printer supports the "job-message-from-operator" Job Description attribute (see [ipp-mod] section
1159 4.3.16) and the client explicitly supplies a new value for the "job-message-from-operator" in the request,
1160 then the Printer MUST set the "job-message-from-operator" Job attribute to this new value.

1161 If the Printer supports the Set-Job-Attributes operation, then it SHOULD support setting of:
1162 all Job Template ("xxx") attributes (see [ipp-mod] section 4.2 and extensions)
1163 that the implementation supports.

1164 The following Job Description attributes (see [ipp-mod] section 4.3) MUST NOT be settable, i.e., they are
1165 READ-ONLY:

1166 job-uri
1167 job-id
1168 job-printer-uri
1169 job-more-info
1170 job-originating-user-name - set in create operation
1171 job-state
1172 job-state-reasons
1173 job-state-message
1174 number-of-documents
1175 output-device-assigned
1176 time-at-creation
1177 time-at-processing
1178 time-at-completed
1179 job-printer-up-time
1180 date-time-at-creation
1181 date-time-at-processing
1182 date-time-at-completed
1183 number-of-intervening-jobs
1184 job-k-octets
1185 job-k-octets-processed
1186 job-impressions-completed
1187 job-media-sheets-completed
1188 attributes-charset - set in Job Creation operation
1189 attributes-natural-language - set in Job Creation operation

1190 The following Set2 Job Description attributes are READ-ONLY:

1191 original-requesting-user-name - set in Job Creation operation

1192 The remaining Job Description attributes MAY be settable using the Set-Job-Attributes operation,
1193 depending on implementation.

1194 Whether or not the Set-Job-Attributes operation affects jobs that are submitted using job submission
1195 protocols other than IPP, depends on implementation, i.e., on whether the IPP protocol is being used as a
1196 universal management protocol or just to manage IPP jobs, respectively. See "printer-controls-other-
1197 protocols" (section 4.3).

1198 *Access Rights:* Authentication and access control (see [ipp-mod] sections 1, 8.3, and 8.5) apply to this
1199 operation.

1200 8.2.1.2 Set-Job-Attributes Request

1201 The following sets of attributes are part of the Set-Job-Attributes Request:

1202 Group 1: Operation Attributes

1203 Natural Language and Character Set:

1204 The "attributes-charset" and "attributes-natural-language" attributes as described in [ipp-mod]
1205 section 3.1.4.1.

1206

1207 Target:

1208 Either (1) the "printer-uri" (uri) plus "job-id" (integer(1:MAX)) or (2) the "job-uri" (uri) operation
1209 attribute(s) which define the target for this operation as described in [ipp-mod] section 3.1.5.

1211 Requesting User Name:

1212 The "requesting-user-name" (name(MAX)) attribute SHOULD be supplied by the client as
1213 described in [ipp-mod] section 8.3.

1216 Group 2: Job Attributes

1217 The client MUST supply a set of Job attributes as defined in [ipp-mod] section 4.2 Job Template
1218 Attributes ("xxx" attributes) and section 4.3 Job Description Attributes. Each Job attribute supplied
1219 in Group 2 replaces the value(s) of the corresponding Job attribute on the target Job object. For
1220 attributes that can have multiple values (1setOf), all values supplied by the client replace all values
1221 of the corresponding Job object attribute.

1223 8.2.1.3 Set-Job-Attributes Response

1224 The Printer object returns the following sets of attributes as part of the Set-Job-Attributes Response:

1225 Group 1: Operation Attributes

1226 Status Message:

1227 In addition to the REQUIRED status code returned in every response, the response OPTIONALLY
1228 includes a "status-message" (text(255)) and/or a "detailed-status-message" (text(MAX)) operation
1229 attribute as described in [ipp-mod] sections 13 and 3.1.6.

1231 Natural Language and Character Set:

1232 The "attributes-charset" and "attributes-natural-language" attributes as described in [ipp-mod]
1233 section 3.1.4.2.

1235 Group 2: Unsupported Attributes

1236 See [ipp-mod] section 3.1.7 for details on returning Unsupported Attributes.

1237
1238 The attributes returned are the same as for the create operation with the same new attribute values.
1239 In the case of attributes that are supported, but are not settable by the implementation, i.e., are not
1240 among the values of the Printer's "settable-attributes" Printer Description attribute (see section 4.1),
1241 the Printer object returns the client-supplied attribute(s) with a substituted value of 'not-supported'
1242 (same out-of-band value as for attributes that are not supported). This value's syntax type is "out-of-
1243 band" and its encoding is defined by special rules for "out-of-band" values in the "Encoding and
1244 Transport" document [IPP-PRO]. Its value indicates that the attribute is either not settable or is not
1245 supported at all.

1246

1247 8.2.2 Reprocess-Job Operation

1248 This OPTIONAL operation is a create job operation that allows a client to re-process a copy of a job that
1249 had been retained in the queue after processing completed, was canceled, or was aborted (see [ipp-mod]
1250 section 4.3.7.2). This operation is the same as the Restart-Job operation (see [ipp-mod] section 3.3.7),
1251 except that the Printer creates a new job that is a copy of the target job and the target job is unchanged. The
1252 new job is assigned new values to the "job-uri" and "job-id" attributes and the new job's Job Description
1253 attributes that accumulate job progress, such as "job-impressions-completed", "job-media-sheets-
1254 completed", and "job-k-octets-processed", are initialized to 0 as with any create job operation. The target
1255 job moves to the Job History after a suitable period, independent of whether one or more Reprocess-Job
1256 operations have been performed on it.

1257 If the Set-Job-Attributes operation is supported, then the "job-hold-until" operation attribute MUST be
1258 supported with at least the 'indefinite' value, so that a client can modify the new job before it is scheduled
1259 for processing using the Set-Job-Attributes operation. After modifying the job, the client can release the
1260 job for processing, by using the Release-Job operation specifying the newly assigned "job-uri" or "job-id"
1261 for the new job.

1262

1263 8.2.3 Cancel-Current-Job Operation

1264 This OPTIONAL operation allows a client to cancel the current job on the target Printer or the specified job
1265 if it is the current job on the Printer. See [ipp-mod] section 3.3.3 for the semantics of canceling a job.
1266 Since a Job might already be marking by the time a Cancel-Current-Job is received, some media sheet
1267 pages might be printed before the job is actually terminated.

1268 If the client does not supply a "job-id" operation attribute, the Printer MUST accept the request and cancel
1269 the current job if there is a current job in the 'processing' or 'processing-stopped' state; otherwise, it MUST
1270 reject the request and return the 'client-error-not-possible' status code. If more than one job is in the
1271 'processing' or 'processing-stopped' states, the one that is marking is canceled and the others are unaffected.

1272 Warning: On a shared printer, there is a race condition. Between the time that a user issues this operation
1273 and its acceptance, the current job might change to a different job. If the user or operator is authenticated to
1274 cancel the new job, the wrong job is canceled. To prevent this race from canceling the wrong job, the client
1275 MAY supply the "job-id" operation attribute which is checked against the current job's job-id. If the job
1276 identified by the "job-id" attribute is not the current job on the Printer, i.e., is not in the 'processing' or
1277 'processing-stopped' states, the Printer MUST reject this operation and return the 'client-error-not-possible'
1278 status code. Otherwise, the Printer cancels the specified job.

1279 *Access Rights:* Authentication and access control (see [ipp-mod] sections 1, 8.3, and 8.5) apply to this
1280 operation.

1281 The Cancel-Current-Job Request and Cancel-Current-Job Response have the same attribute groups and
1282 attributes as the Resume-Printer operation (see [ipp-mod] section 3.2.8), including the new "job-message-
1283 from-operator" operation attribute (see section 3.2), with the addition of the following Group 1 Operation
1284 attributes in the request:

1285 "job-id" (integer(1:MAX)):

1286 The client OPTIONALLY supplies this Operation attribute in order to verify that the identified job
1287 is still the current job on the target Printer object. The IPP object MUST supports this operation
1288 attribute, if it supports this operation.

1289

1290 8.2.4 Pause-Current-Job operation

1291 **ISSUE 14 - Since the semantics of Pause-Current-Job is different from Pause-Printer, in that other jobs are**
1292 **processed, while this job is stopped, should we have a different name for the verb, such as Suspend-**
1293 **Current-Job, instead of Pause-Current-Job. Otherwise, users may be mistakenly think that the printer is**
1294 **paused when the job is paused. If the name is changes, then the 'job-paused' job state reason would also be**
1295 **changed to 'job-suspended'.**

1296 This OPTIONAL operation allows a client to stop the current job on the target Printer or the specified job if
1297 it is the current job on the Printer, and allow other jobs to be processed instead. The Printer moves the
1298 current job or the target job to the 'processing-stopped' state and sets the 'job-paused' value in the job's "job-
1299 state-reasons" attribute and processes other jobs.

1300 If the client does not supply a "job-id" operation attribute, the Printer MUST accept the request and pause
1301 the current job if there is a current job in the 'processing' or 'processing-stopped' state; otherwise, it MUST
1302 reject the request and return the 'client-error-not-possible' status code. If more than one job is in the
1303 'processing' or 'processing-stopped' states, all of them are paused.

1304 Warning: On a shared printer, there is a race condition. Between the time that a user issues this operation
1305 and its acceptance, the current job might change to a different job. If the user or operator is authenticated to
1306 pause the new job, the wrong job is paused. To prevent this race from pausing the wrong job, the client
1307 MAY supply the "job-id" operation attribute which is checked against the current job's job-id. If the job
1308 identified by the "job-id" attribute is not the current job on the Printer, i.e., is not in the 'processing' or
1309 'processing-stopped' states, the Printer MUST reject this operation and return the 'client-error-not-possible'
1310 status code. Otherwise, the Printer pauses the specified job and processed other jobs.

1311 A paused job is resumed using the Resume-Job operation (see section 8.2.5). If the Pause-Current-Job
1312 operation is supported, then the Resume-Job operation MUST be supported, and vice-versa.

1313 The Printer MUST reject a Release-Job request (and return the 'client-error-not-possible') for a job that has
1314 been paused , i.e., for a job in the 'processing-stopped' state, with the 'job-paused' value in its "job-state-
1315 reasons" attribute. The Hold-Job and Release-Job operations are for holding and releasing held jobs, not
1316 pausing and resuming paused jobs.

1317 **ISSUE 15 - Ok for Pause-Job to reject a request for a Job that is already paused (like Cancel-Job), instead**
1318 **of accepting the request?**

1319 *Access Rights:* Authentication and access control (see [ipp-mod] sections 1, 8.3, and 8.5) apply to this
1320 operation.

1321 The Pause-Current-Job Request and Pause-Current-Job Response have the same attribute groups and
1322 attributes as the Resume-Printer operation (see [ipp-mod] section 3.2.8), including the new "job-message-
1323 from-operator" operation attribute (see section 3.2), with the addition of the following Group 1 Operation
1324 attributes in the request:

1325 "job-id" (integer(1:MAX)):

1326 The client OPTIONALLY supplies this Operation attribute in order to verify that the identified job
1327 is still the current job on the target Printer object. The IPP object MUST supports this operation
1328 attribute, if it supports this operation.

1329 "when" (type2 keyword)

1330 The client OPTIONALLY supplies this attribute. The Printer object OPTIONALLY supports this
1331 attribute, if it supports this operation. The value of this attribute indicates when to pause the printer.
1332 If the client omits this attribute, the Printer assumes the 'after-current-copy' value. The 'after-
1333 current-copy' value is REQUIRED to be supported if the "when" attribute is supported; the
1334 remaining values are OPTIONAL.

1335 Note: There is no way to query to see which values of the "when" attribute are supported for this or
1336 any other operation. Since this operation is intended for Operators, rather than End-Users, it did not
1337 seem necessary to provide the means to query the supported values.

1338
1339 Standard keyword values are:

1340 'now' - pause the current Job immediately, while the current Job is processing.

1341 'after-current-copy' - pause the current Job after the current Job finishes printing its current
1342 copy.

1343 **ISSUE 16 - Ok that the only values for the "when" operation attribute for the Pause-Current-Job are**
1344 **'now' and 'after-current-copy' with 'now' being the default and REQUIRED?**

1345
1346 "synchronize" (boolean)

1347 The client OPTIONALLY supplies this attribute. The Printer object OPTIONALLY supports this
1348 attribute. This attribute indicates whether or not the printer is to synchronize the checkpoint data for
1349 the current job being paused with the pages that have actually printed. If this attribute is supported,
1350 then a value of 'true' implies that the Printer will be able to resume the job at the point of
1351 synchronization when the job is resumed.

1352
1353 If the Printer supports this attribute but the client does not supply it, the Printer is assumed to
1354 perform synchronization ('true' behavior). If the Printer does not support this attribute, the Printer is
1355 assumed to not synchronize ('false' behavior).

1356

1357 8.2.5 Resume-Job operation

1358 This OPTIONAL operation allows a client to resume the target job at the point where it was paused. The
1359 Printer moves the target job to the 'pending' state and removes the 'job-paused' value from the job's "job-
1360 state-reasons" attribute.

1361 If the target job is not in the 'processing-stopped' state with the 'job-paused' value in the job's "job-state-
1362 reasons" attribute, the Printer rejects the request and returns the 'client-error-not-possible' status code, since
1363 the job was not paused.

1364 **ISSUE 17 - Ok to return an error (like Cancel-Job), rather than having Resume-Job accept the request even
1365 if the Job is already resumed (i.e., not paused)?**

1366 If the Resume-Job operation is supported, then the Pause-Current-Job operation MUST be supported, and
1367 vice-versa.

1368 *Access Rights:* Authentication and access control (see [ipp-mod] sections 1, 8.3, and 8.5) apply to this
1369 operation.

1370 The Resume-Job Request and Resume-Job Response have the same attribute groups and attributes as the
1371 Release-Job operation (see [ipp-mod] section 3.3.6), including the new "job-message-from-operator"
1372 operation attribute (see section 3.2).

1373

1374 8.2.6 Promote-Job operation

1375 This OPTIONAL operation allows a client to make the pending target job be processed next after the
1376 current job completes. This operation is specially useful in a production printing environment where the
1377 operator is involved in job scheduling.

1378 If the target job is in the 'pending' state, this operation does not change the job's state, but causes the job to
1379 be processed after the current job(s) complete. If the target job is not in the 'pending' state, the Printer
1380 rejects the request and returns the 'client-error-not-possible' status code. The Printer returns the target job
1381 immediately after the current job(s) in a Get-Jobs response (see [ipp-mod] section 3.2.6) for the 'not-
1382 completed' jobs.

1383 When the current job completes, is canceled, paused, or aborted, the target of this operation is processed
1384 next.

1385 If a client issues this request (again) before the target of the operation of the original request started
1386 processing, the target of this new request is scheduled before the previous job that was to be processed next.

1387 Note: IPP is specified not to require queues for job scheduling, since there are other implementations for
1388 scheduling multiple jobs. However, if an implementation does implement queues for jobs, then the
1389 Promote-Job puts the specified job at the front of the queue. A subsequent Promote-Job before the first job
1390 starts processing puts that specified job at the front of the queue, so that it is "in front" of the previously
1391 promoted job.

1392 *Access Rights:* Authentication and access control (see [ipp-mod] sections 1, 8.3, and 8.5) apply to this
1393 operation.

1394 The Promote-Job Request and Promote-Job Response have the same attribute groups and attributes as the
1395 Cancel-Job operation (see [ipp-mod] section 3.3.3), including the new "job-message-from-operator"
1396 operation attribute (see section 3.2).

1397

1398 9 IANA Considerations

1399 The operations and attributes in this registration proposal will be published by IANA according to the
1400 procedures in RFC 2566 [rfc2566] section 6.4 for operations with the following URL:

1401 <ftp.isi.edu/iana/assignments/ipp/operations/set2.txt>

1402 10 Internationalization Considerations

1403 This document has the same localization considerations as the [ipp-mod].

1404 11 Security Considerations

1405 The IPP Model and Semantics document [ipp-mod] discusses high level security requirements (Client
1406 Authentication, Server Authentication and Operation Privacy). Client Authentication is the mechanism by
1407 which the client proves its identity to the server in a secure manner. Server Authentication is the mechanism
1408 by which the server proves its identity to the client in a secure manner. Operation Privacy is defined as a
1409 mechanism for protecting operations from eavesdropping.

1410 12 Author's Addresses

1411 Carl Kugler

1412 IBM

1413 Boulder CA

1414

1415 Phone: (303) 924-5060

1416 FAX:

1417 e-mail: kugler@us.ibm.com

1418

1419 Tom Hastings

1420 Xerox Corporation

1421 737 Hawaii St. ESAE 231

1422 El Segundo, CA 90245

1423

1424 Phone: 310-333-6413

1425 Fax: 310-333-5514

1426 e-mail: hastings@cp10.es.xerox.com

1427

1428 Harry Lewis

1429 IBM

1430 Boulder CA

1431
1432
1433
1434
1435

Phone: (303) 924-5337
FAX:
e-mail: harryl@us.ibm.com

1436 13 References

1437 [ipp-mod]

1438 R. deBry, T. Hastings, R. Herriot, S. Isaacson, P. Powell, "Internet Printing Protocol/1.0: Model and
1439 Semantics", <draft-ietf-ipp-model-v11-03.txt>, June, 1999.

1440 [RFC2566]

1441 R. deBry, T. Hastings, R. Herriot, S. Isaacson, P. Powell, "Internet Printing Protocol/1.0: Model and
1442 Semantics", RFC 2566, April 1999.

1443 14 Change History

1444 This section summarizes the changes. Each sub-section is in reverse chronological order. Adding or
1445 removing ISSUES that don't change the document are not listed here.

1446 14.1 Changes to the November 1, 1999 version to make the November 16, 1999 version

1447 The following changes to the October 22, 1999 version to make the November 1, 1999 version as a result of
1448 the IPP WG meeting in Durham, 10/99:

- 1449 1. Formally defined IPP Printer fan-out, IPP Printer fan-in, and output device fan-out. Added figures to
1450 show IPP Printer fan-out and IPP Printer fan-in.
- 1451 2. Added "parent-printers-supported (1setOf uri) Printer Description attribute to point back up the Printer
1452 hierarchy.
- 1453 3. Added the requirements for forwarding operations that affect Jobs and for not forwarding operations
1454 that affect Printers.
- 1455 4. Added "original-requesting-user-name" (name(MAX)) to represent the original end user, not the parent
1456 Printer's host.
- 1457 5. Changed the default for "when" for the Pause-Printer operation from 'after-current-job' to 'now', since
1458 that is the behavior in IPP/1.1 where the "when" operation attribute is not defined.
- 1459 6. Allowed a non-leaf Printer to have only one subordinate Printer.

- 1460 7. Changed most of the "parent" Printer terminology to "non-leaf" Printer to contrast more clearly with
1461 "leaf" Printer objects. The term "parent" is only used when talking about a subordinate's immediate
1462 parent Printer object.
- 1463 8. Added "original-requesting-user-name" (name (MAX)) to the list of READ-ONLY Job Description
1464 attributes.
- 1465 14.2 Changes to the October 22, 1999 version to make the November 1, 1999 version
- 1466 The following changes to the October 22, 1999 version to make the November 1, 1999 version as a result of
1467 the IPP WG meeting in Durham, 10/99:
- 1468 1. Removed the Reset-Printer, Non-Process-Run-Out, and Space-Current-Job operations from this Set2
1469 spec and moved them to a new Set3 spec for use with the new Device object, renaming them
1470 appropriately, to Reset-Device, Non-Process-Run-Out-Device, and Space-Device.
- 1471 2. Added the concept of parent and subordinate Printer objects to formally represent fan-out. Mentioned
1472 the Device object that is in a new [ipp-set3] spec.
- 1473 3. Distributed the definition of the "when" operation attribute to the Pause-Printer (IPP/1.1), Shutdown-
1474 Printer, and Pause-Current-Job operations and listed the values that are appropriate to that operation
1475 only:
1476 Pause-Printer: 'now', 'after-current-copy', 'after-current-job' (default), and 'after-all'.
1477 Shutdown-Printer: 'now', 'after-current-job' (default), and 'after-all'
1478 Pause-Current-Job: 'now', 'after-current-copy' (default)
- 1479 4. Deleted the "device-name" operation attribute and the "device-names-supported" (1setOf name(127))
1480 Printer Description attribute. The latter will be part of the [ipp-set3] document.
- 1481 5. Kept the "job-settable-attributes" (1setOf type2 keyword) and "printer-settable-attributes" (1setOf type2
1482 keyword), but deleted the "interpreter-settable-attributes (1setOf type2 keyword), since the Interpreter
1483 object and its attributes are really a sub-class of the Printer object.
- 1484 6. Deleted the "when-values-supported" (1setOf type2 keyword) Printer Description attribute.
- 1485 7. Added the "subordinate-printers-supported" (1setOf uri) Printer Description attribute.
- 1486 14.3 Changes to the September 19, 1999 version to make the October 22, 1999 version
- 1487 Adding or removing ISSUES that don't change the document are not listed here. The following changes to
1488 the September 19, 1999 version to make the October 22, 1999 version as a result of the IPP WG meeting in
1489 Denver, 9/99:
- 1490 1. Added the Interpreter object.

- 1491 2. Added the "device-name" operation attribute to handle passing operations through the IPP Printer object
1492 to the device.
- 1493 3. Added the out-of-band 'not-settable' to allow the Set-Job-Attributes and Set-Printer-Attributes response
1494 to indicate the difference between an unsupported attribute and a supported, but not settable, attribute in
1495 the Unsupported Attributes Group.
- 1496 4. Removed "when-values-supported" and "job-settable-attributes" and "printer-settable-attributes" and
1497 "interpreter-settable-attributes" from the list of attributes that MUST be read-only. So an administrator
1498 could sub-set the policy on what when values are supported or which attributes can be set.

1499 14.4 Changes to the July 19, 1999 version to make the September 19, 1999 version

1500 The following changes to the July 19, 1999 version to make the September 19, 1999 version as a result of
1501 the IPP WG meeting in Alaska, 8/99:

- 1502 1. Refer to proposal as "Set2" rather than "Administrative" operations.
- 1503 2. Revise the emphasis on administrator throughout the document, although the word administrator
1504 remains wherever appropriate.
- 1505 3. Convert non-process-run-out from an operations attribute to an operation.
- 1506 4. Added Issue 21: For all these "access" caveats, why not just say... 'authentication and access control
1507 (see ipp-mod sections 1, 8.3 and 8.5) applies to this operation'.?
- 1508 5. Added Issue 22: Why? This is backward, if you ask me (HRL).
- 1509 6. Per resolution of Issue 2, the "settable-attributes" Printer Description attribute, was replaced with three
1510 Printer Description attributes: "printer-settable-attributes", "job-settable-attributes", and "interpreter-
1511 settable-attributes". The latter for those implementations that have different values for Printer attributes
1512 in the Get-Printer-Attributes and Set-Printer-Attributes operations, depending on the value of the
1513 "document-format" operation attribute supplied by the client. If and when we get a Document object,
1514 then we can add a "document-settable-attributes" Printer Description attribute.

1515 14.5 Changes to the June 30, 1999 version to make the July 19, 1999 version

1516 The following changes to the June 30, 1999 version to make the July 19, 1999 version as a result of the IPP
1517 WG meeting in Copenhagen, 7/7/99-7/8/99, and the IPP telecon, 7/14/1999:

- 1518 1. Sections 2.1 and 2.2: Clarified that the way to remove a message from the operator was for the client to
1519 supply a zero-length or all white space text string which is copied as usual to the "xxx-message-from-
1520 operator" attribute.

- 1521 2. Section 2.3: Added "factory-settings" (boolean) operation attribute to the Get-Printer-Attributes
1522 operation.
- 1523 3. Section 2.4: Added the "when" operation attribute to the Pause-Current-Job operation.
- 1524 4. Section 2.4: Made the "when" operation attribute OPTIONAL for use in operations (Pause-Printer,
1525 Reset-Printer, Shutdown-Printer, and Pause-Current-Job operations).
- 1526 5. Sections 2.5: Added table of operation attributes for the Printer operations to make it easy to compare.
- 1527 6. Sections 2.6: Added table of operation attributes for the Job operations to make it easy to compare.
- 1528 7. Section 3.1: Added "settable-attributes" (1setOf type2 keyword) READ-ONLY Printer Description
1529 attribute.
- 1530 8. Section 3.2: Added "printer-controls-other-protocols" (boolean) Printer Description attribute
- 1531 9. Section 3.3: Added the READ-ONLY "printer-message-time" (integer(MIN:MAX)) Printer
1532 Description attribute to keep time message updated in time ticks.
- 1533 10. Section 4.2: Deleted the 'process-next' "job-state-reasons" value, so that repeated Promote-Job
1534 operations promote each job "to the front of the queue".
- 1535 11. Sections 6.1.1.1 and 6.2.1.1: Replaced the table that listed all attributes with one that lists only the
1536 attributes that MUST be READ-ONLY.
- 1537 12. Section 6.1.1.1: Indicated that attributes that are not specified as READ-ONLY in this document MAY
1538 be settable. If they control behavior, that changing their values MUST change the behavior.
- 1539 13. Section 6.1.1.2 and 6.2.1.2: Deleted the "ipp-attribute-fidelity" operation attribute from the Set-Printer-
1540 Attributes and Set-Job-Attributes operations. All set operations are atomic.
- 1541 14. Section 6.1.1.2: Add the concept of the Interpreter object to handle attributes whose values vary in the
1542 Set-Printer-Attributes and Get-Printer-Attributes, depending on the value of the "document-format"
1543 operation attribute.
- 1544 15. Sections 6.1.1.3 and 6.2.1.2: Changed the "out-of-band" 'not-settable' value back to the existing 'not-
1545 supported' value.
- 1546 16. Section 6.1.2 and 6.1.3: Added "job-type" operation attribute to Disable-Printer and Enable-Printer
1547 operations with values: 'network-jobs', 'walk-up-jobs', and 'all-jobs'.
- 1548 17. Section 6.1.5: Clarified that Restart-Printer brings up the Printer disabled and paused, since that is the
1549 eventual state that Shutdown-Printer leaves the printer in.
- 1550 18. Section 6.1.5: Indicated that if Restart-Printer is supported, then Shutdown-Printer MUST be
1551 supported.

- 1552 19. Section 6.1.6: Deleted Space-Printer operation. Keep Space-Current-Job operation only which has a
1553 "job-id" operation attribute that a client MAY supply.
- 1554 20. Section 6.1.6: Clarified that Shutdown-Printer is for a long period of time, not just to reset the device or
1555 change attribute values. Also that Shutdown performs an immediate Disable-Printer and an eventual
1556 Pause-Printer.
- 1557 21. Sections 6.2.3, 6.2.4, and 6.2.7 : Added a "job-id" operation attribute to Cancel-Current-Job, Pause-
1558 Current-Job, and Space-Current-Job that a client MAY supply to check for race condition where current
1559 job changes
- 1560 22. Section 6.2.4: Combined Pause-Job into Pause-Current-Job operation.
- 1561 23. Sections 6.2.4 and 6.2.5: Pause-Current-Job puts job in 'processing-stopped' state, not 'pending-held'
1562 state.
- 1563 24. Section 6.2.6: Simplified Promote-Job, so that it behaves as if the job were put at the front of the
1564 queue.

1565 15 Appendix A: Full Copyright Statement

1566 Copyright (C) The Internet Society (1998,1999). All Rights Reserved

1567 This document and translations of it may be copied and furnished to others, and derivative works that
1568 comment on or otherwise explain it or assist in its implementation may be prepared, copied, published and
1569 distributed, in whole or in part, without restriction of any kind, provided that the above copyright notice and
1570 this paragraph are included on all such copies and derivative works. However, this document itself may not
1571 be modified in any way, such as by removing the copyright notice or references to the Internet Society or
1572 other Internet organizations, except as needed for the purpose of developing Internet standards in which
1573 case the procedures for copyrights defined in the Internet Standards process must be followed, or as
1574 required to translate it into languages other than English.

1575 The limited permissions granted above are perpetual and will not be revoked by the Internet Society or its
1576 successors or assigns.

1577 This document and the information contained herein is provided on an "AS IS" basis and THE INTERNET
1578 SOCIETY AND THE INTERNET ENGINEERING TASK FORCE DISCLAIMS ALL WARRANTIES,
1579 EXPRESS OR IMPLIED, INCLUDING BUT NOT LIMITED TO ANY WARRANTY THAT THE USE
1580 OF THE INFORMATION HEREIN WILL NOT INFRINGE ANY RIGHTS OR ANY IMPLIED
1581 WARRANTIES OF MERCHANTABILITY OR FITNESS FOR A PARTICULAR PURPOSE.