



Industry Standards and Technology Organization  
affiliated with the IEEE and the IEEE Standards Association

1  
2  
3  
4  
5  
6  
7  
8  
9  
10  
11  
12  
13  
14  
15  
16  
  
17  
18  
19  
20  
21  
22  
23

# The Printer Working Group Internet Printing Protocol (IPP): Document object

18 ISSUES are highlighted like this.

ISSUE 01: Need to add all new attributes to CIP4/PODi/FSG IPP mapping document. When?



Draft 0.4 for 5100.5-2002

October 14, 2002

24  
25  
26  
27  
28  
29  
30  
31  
32  
33  
34  
35  
36  
37  
38  
39  
40  
41  
42  
43  
44  
45  
46  
47  
48  
49  
50  
51  
52  
53  
54  
55  
56  
57  
58  
59  
60  
61

# The Printer Working Group Standard for Internet Printing Protocol (IPP): Document Object

**Abstract:** This IPP specification extends the IPP Model and Semantics [RFC2911] object model by defining a Document object. The [RFC2911] Job object is extended to contain one or more Document objects which are passive objects operated on by the Job. The Document object is created by the [RFC2911] Send-Document and Send-URI operations and represents an Input Document to the Job. This specification also adds a Document Attributes group (and tag) to these Send-Document and Send-URI requests. The Document Attributes group contains any Document Template attributes to be applied to this Document object being created, overriding any corresponding Job Template attribute supplied at the job level (including the “document-overrides” operation attributes at the Job or Document level). A new Create-Document operation allows a client to supply the Document Attributes without the data (like Create-Job does for a Job object). Then the client sends the data content to that Document object using the new Send-Data operation. The client can also supply Document Attributes with the existing Send-Document and Send-URI operations to create Document objects with content data or a document reference, respectively.

This specification also defines seven new operations for Document objects once they have been created: Cancel-Current-Document, Cancel-Document, Get-Document-Attributes, Get-Documents, Delete-Document, Set-Document-Attributes, and Validate-Document.

This specification also lists all of the attributes defined in other IPP specifications to show their relationship to corresponding attributes defined in this IPP specification for use with the Document object. The full semantics of the “document-state”, “document-state-reasons”, and “document-state-message” Document Description attributes are given along side of the corresponding [RFC2911] “job-state”, “job-state-reasons”, and “job-state-message” Job Description attributes.

The purpose for specifying the Document object is so that the print industry can have a common semantic specification for use in IPP, the PWG Semantic Model, the PWG Print Service Interface (PSI) project, and the Free Standards Group Job Ticket API which all have a Document object.

This document is available electronically at:

[ftp://ftp.pwg.org/pub/pwg/ipp/new\\_DOC/IPP-document-object.pdf](ftp://ftp.pwg.org/pub/pwg/ipp/new_DOC/IPP-document-object.pdf), .doc, .rtf

61 **Copyright (C) 2002, IEEE ISTO. All rights reserved.**

62 This document may be copied and furnished to others, and derivative works that comment on, or otherwise explain it  
63 or assist in its implementation may be prepared, copied, published and distributed, in whole or in part, without  
64 restriction of any kind, provided that the above copyright notice, this paragraph and the title of the Document as  
65 referenced below are included on all such copies and derivative works. However, this document itself may not be  
66 modified in any way, such as by removing the copyright notice or references to the IEEE-ISTO and the Printer  
67 Working Group, a program of the IEEE-ISTO.

68 Title: The Printer Working Group Standard for the Internet Printing Protocol (IPP): Document Object

69 The IEEE-ISTO and the Printer Working Group DISCLAIM ANY AND ALL WARRANTIES, WHETHER EXPRESS  
70 OR IMPLIED INCLUDING (WITHOUT LIMITATION) ANY IMPLIED WARRANTIES OF MERCHANTABILITY OR  
71 FITNESS FOR A PARTICULAR PURPOSE.

72 The Printer Working Group, a program of the IEEE-ISTO, reserves the right to make changes to the document  
73 without further notice. The document may be updated, replaced or made obsolete by other documents at any time.

74 The IEEE-ISTO takes no position regarding the validity or scope of any intellectual property or other rights that might  
75 be claimed to pertain to the implementation or use of the technology described in this document or the extent to  
76 which any license under such rights might or might not be available; neither does it represent that it has made any  
77 effort to identify any such rights.

78 The IEEE-ISTO invites any interested party to bring to its attention any copyrights, patents, or patent applications, or  
79 other proprietary rights which may cover technology that may be required to implement the contents of this  
80 document. The IEEE-ISTO and its programs shall not be responsible for identifying patents for which a license may  
81 be required by a document and/or IEEE-ISTO Industry Group Standard or for conducting inquiries into the legal  
82 validity or scope of those patents that are brought to its attention. Inquiries may be submitted to the IEEE-ISTO by e-  
83 mail at:

84 [ieee-isto@ieee.org](mailto:ieee-isto@ieee.org).

85 The Printer Working Group acknowledges that the IEEE-ISTO (acting itself or through its designees) is, and shall at  
86 all times, be the sole entity that may authorize the use of certification marks, trademarks, or other special  
87 designations to indicate compliance with these materials.

88 Use of this document is wholly voluntary. The existence of this document does not imply that there are no other  
89 ways to produce, test, measure, purchase, market, or provide other goods and services related to its scope.

90

**90 About the IEEE-ISTO**

91

92 The IEEE-ISTO is a not-for-profit corporation offering industry groups an innovative and flexible operational forum  
93 and support services. The IEEE-ISTO provides a forum not only to develop standards, but also to facilitate activities  
94 that support the implementation and acceptance of standards in the marketplace. The organization is affiliated with  
95 the IEEE (<http://www.ieee.org/>) and the IEEE Standards Association (<http://standards.ieee.org/>).

96

97 For additional information regarding the IEEE-ISTO and its industry programs visit <http://www.ieee-isto.org>.

98

99

**100 About the IEEE-ISTO PWG**

101 The Printer Working Group (or PWG) is a Program of the IEEE Industry Standards and Technology Organization  
102 (ISTO) with member organizations including printer manufacturers, print server developers, operating system  
103 providers, network operating systems providers, network connectivity vendors, and print management application  
104 developers. The group is chartered to make printers and the applications and operating systems supporting them  
105 work together better. All references to the PWG in this document implicitly mean "The Printer Working Group, a  
106 Program of the IEEE ISTO." In order to meet this objective, the PWG will document the results of their work as open  
107 standards that define print related protocols, interfaces, procedures and conventions. Printer manufacturers and  
108 vendors of printer related software will benefit from the interoperability provided by voluntary conformance to these  
109 standards.

110 In general, a PWG standard is a specification that is stable, well understood, and is technically competent, has  
111 multiple, independent and interoperable implementations with substantial operational experience, and enjoys  
112 significant public support.

113 For additional information regarding the Printer Working Group visit: <http://www.pwg.org>

114

115

**116 Contact information:**

117 IPP Web Page: <http://www.pwg.org/ipp/>

118 IPP Mailing List: [ipp@pwg.org](mailto:ipp@pwg.org)

119 To subscribe to the ipp mailing list, send the following email:

120 1) send it to [majordomo@pwg.org](mailto:majordomo@pwg.org)

121 2) leave the subject line blank

122 3) put the following two lines in the message body:

123 subscribe ipp

124 end

125 Implementers of this specification are encouraged to join the IPP Mailing List in order to participate in any  
126 discussions of clarifications or review of registration proposals for additional names. Requests for additional media  
127 names, for inclusion in this specification, should be sent to the IPP Mailing list for consideration.

128

128	<b>Contents</b>	
129	1 Introduction and Summary .....	8
130	1.1 Scope .....	8
131	2 Terminology .....	9
132	2.1 Conformance Terminology .....	9
133	2.2 Other Terminology .....	10
134	3 Document Operations .....	11
135	3.1 Create-Document Operation .....	12
136	3.1.1 Create-Document Request .....	12
137	3.1.2 Create-Document Response .....	14
138	3.2 Send-Data Operation .....	15
139	3.2.1 Send-Data request .....	15
140	3.2.2 Send-Data Response .....	16
141	3.3 Send-Document Operation .....	16
142	3.3.1 Send-Document Request .....	16
143	3.3.2 Send-Document Response .....	17
144	3.4 Send-URI Operation .....	18
145	3.5 Get-Document-Attributes Operation .....	18
146	3.5.1 Get-Document-Attributes Request .....	19
147	3.5.2 Get-Document-Attributes Response .....	19
148	3.6 Get-Documents Operation .....	20
149	3.6.1 Get-Documents Request .....	20
150	3.6.2 Get-Documents Response .....	21
151	3.7 Set-Document-Attributes Operation .....	22
152	3.7.1 Settable and READ-ONLY Document Description attributes .....	23
153	3.7.2 Set-Document-Attributes Request .....	24
154	3.7.3 Set-Document-Attributes Response .....	24
155	3.8 Cancel-Document Operation .....	25
156	3.8.1 Cancel-Document Request .....	26
157	3.8.2 Cancel-Document Response .....	27
158	3.9 Cancel-Current-Document Operation .....	27
159	3.10 Delete-Document Operation .....	28
160	3.11 Validate-Document Operation .....	29
161	4 Semantic extensions to Job operations .....	30
162	4.1 Cancel-Current-Job ([adm-ops] section 4.2) .....	30
163	4.2 Cancel-Job ([RFC2911] section 3.3.3) .....	30
164	4.3 Create-Job ([RFC2911] section 3.2.4) .....	30
165	4.4 Print-Job ([RFC2911] section 3.2.1) .....	30
166	4.5 Print-URI ([RFC2911] section 3.2.2) .....	31
167	4.6 Purge-Jobs ([RFC2911] section 3.2.9) .....	31

168	4.7	Release-Job ([RFC2911] section 3.3.6)	31
169	4.8	Reprocess-Job ([adm-ops] section 4.1)	31
170	4.9	Restart-Job ([RFC2911] section 3.3.7)	31
171	4.10	Send-Document ([RFC2911] section 3.3.1)	31
172	4.11	Send-URI ([RFC2911] section 3.3.2)	31
173	4.12	Suspend-Current-Job ([adm-ops] section 4.3.1)	31
174	5	Attribute Precedence .....	32
175	6	Operation Attributes for the Job and Document Creation operations .....	33
176	6.1	Operation Attributes supplied at the Job and Document Levels	34
177	6.2	Operation Attributes defined for use with the Document Object	35
178	6.2.1	job-mandatory-attributes (1setOf type2 keyword) .....	35
179	6.3	Operation Attributes returned in Job and Document Creation responses	35
180	7	Job Template and Document Template attributes .....	36
181	7.1	Job Template attributes defined for use with the Document object	43
182	7.1.1	job-copies (integer(1:MAX)) Job Template attribute.....	43
183	7.1.2	job-cover-back (collection) Job Template attribute.....	43
184	7.1.3	job-cover-front (collection) Job Template attribute .....	43
185	7.1.4	job-finishings (1setOf type2 enum) Job Template attribute.....	43
186	7.1.5	job-finishings-col (1setOf collection) Job Template attribute.....	43
187	8	Job Description and Document Description attributes .....	44
188	8.1	document-number (integer(1:MAX)) Document Description attribute	46
189	8.2	job-state (type1 enum) Job Description attribute	46
190	8.3	document-state (type1 enum) Document Description attribute	46
191	8.3.1	The "job-state" Job Description attribute and the Job Life Cycle .....	48
192	8.3.2	The "document-state" Document Description attribute and the Document object life Cycle .....	49
193	8.3.3	Forwarding Servers .....	50
194	8.3.4	Partitioning of Job/Document States .....	50
195	8.4	job-state-reasons (1setOf type2 keyword) Job Description attribute	51
196	8.5	document-state-reasons (1setOf type2 keyword) Document Description attribute	51
197	8.6	job-state-message (text(MAX)) Job Description attribute	57
198	8.7	document-state-message (text(MAX)) Document Description attribute	57
199	8.8	document-id-uri (uri) Document Description attribute	57
200	8.9	document-uri (uri) Document Description attribute	57
201	9	Printer attributes .....	58
202	9.1	document-creation-attributes-supported (1setOf type2 keyword)	63
203	9.2	printer-state-reasons (1setOf type2 keyword)	63
204	10	New Values for Existing Printer Description Attributes.....	66
205	10.1	operations-supported (1setOf type2 enum)	66
206	11	Conformance Requirements.....	67
207	11.1	Printer conformance requirements	67

208	11.2	Client conformance requirements	67
209	12	Normative References .....	68
210	13	Informative References .....	69
211	14	IANA Considerations .....	70
212	14.1	Attribute Registrations	70
213	14.2	Additional Enum Attribute Value Registrations for the "operations-supported" Printer Attribute	73
214	14.3	Operation Registrations	73
215	15	Internationalization Considerations .....	74
216	16	Security Considerations.....	74
217	17	Contributors .....	74
218	18	Acknowledgments.....	74
219	19	Author's Address .....	74
220	20	Appendix A: Document operations compared to Job operations.....	75
221	21	Annex B: Change Log (informative) .....	75
222			

## 223 Table of Tables

224	Table 1 - List of Document operations .....	9
225	Table 2 - Job Creation and Document Creation operations.....	11
226	Table 4 - Document State Table for the Set-Document-Attributes operation .....	23
227	Table 5 - Operation Attributes supplied at the Job and Document Levels.....	34
228	Table 6 - Operation attributes returned in Job and Document Creation operation <i>responses</i> .....	36
229	Table 7 - Job Template and Document Template attributes.....	38
230	Table 8 - Job and Document Description attributes.....	44
231	Table 9 - "job-state" and "document-state" attribute values.....	47
232	Figure 1 - The "job-state" Job Description attribute and the Job object life cycle .....	49
233	Figure 2 - The "document-state" Document Description attribute and the Document object life Cycle.....	50
234	A Document object has a much simpler life cycle than a Job object. A Document always progresses from left to right	
235	in the state diagram. No other state transitions are defined.....	50
236	Table 10 - "job-state-reasons" and "document-state-reasons" attribute values .....	52
237	Table 11 - Printer attributes (Job Template and Printer Description) .....	58
238	Table 12 – Operation-id assignments .....	67
239	Table 13 - Document operations compared to Job operations.....	75
240		

## 241 Table of Figures

242	Figure 1 - The "job-state" Job Description attribute and the Job object life cycle .....	49
243	Figure 2 - The "document-state" Document Description attribute and the Document object life Cycle.....	50
244		

## 245 1 Introduction and Summary

246 **Abstract:** This IPP specification extends the IPP Model and Semantics [RFC2911] object model by defining a  
247 Document object. The [RFC2911] Job object is extended to contain one or more Document objects which are  
248 passive objects operated on by the Job. The Document object is created by the [RFC2911] Send-Document and  
249 Send-URI operations and represents an Input Document to the Job. This specification also adds a Document  
250 Attributes group (and tag) to these Send-Document and Send-URI requests. The Document Attributes group  
251 contains any Document Template attributes to be applied to this Document object being created, overriding any  
252 corresponding Job Template attribute supplied at the job level (including the “document-overrides” operation  
253 attributes at the Job or Document level). A new Create-Document operation allows a client to supply the Document  
254 Attributes without the data (like Create-Job does for a Job object). Then the client can send the data content to that  
255 Document object using the new Send-Data operation.

256 This specification also defines seven new operations for Document objects once they have been created: Cancel-  
257 Current-Document, Cancel-Document, Get-Document-Attributes, Get-Documents, Delete-Document, Set-Document-  
258 Attributes, and Validate-Document.

259 This specification also lists all of the attributes defined in other IPP specifications to show their relationship to  
260 corresponding attributes defined in this IPP specification for use with the Document object. The full semantics of the  
261 “document-state”, “document-state-reasons”, and “document-state-message” Document Description attributes are  
262 given along side of the corresponding [RFC2911] “job-state”, “job-state-reasons”, and “job-state-message” Job  
263 Description attributes.

264 The intent is to propose this specification as an IPP extension and which will be referenced as part of the PWG  
265 Semantic Model. The purpose for specifying the Document object is so that the print industry can have a common  
266 semantic specification for use in IPP, the PWG Semantic Model [pwg-sm], the PWG Print Service Interface (PSI)  
267 project [pwg-psi], and the Free Standards Group Job Ticket API [fsg-jt] which all have a Document object.

### 268 1.1 Scope

269 Part of the extension is to allow the client to supply printing instructions, called Document Template attributes, when  
270 creating each Document object. An IPP Printer object implementation MAY support most of the existing Job  
271 Template attributes as Document Template attributes as well. (The PWG Semantic Model [pwg-sm] currently calls  
272 the Job Template attributes and Document Template attributes simply “Job Processing” and “Document Processing”  
273 attributes). Note: There are a number of footnotes which relate this IPP specification to the PWG Semantic model  
274 and other PWG projects, such as the Print Service Interface (PSI) [pwg-psi].

275 The Document object is a passive object<sup>1</sup> and is operated upon by the Job. The client uses the new Create-  
276 Document operation or either of the existing Send-Document and Send-URI operations to create a Document object.  
277 In addition there are 8 new operations that affect the Document object after it has been created as summarized in  
278 Table 1.

---

<sup>1</sup> The Document object is *not* a sub-job. If Job trees are desired where sub-jobs can be on different network nodes, such as in JDF, then a separate specification should be generated for Job trees.



279

Table 1 - List of Document operations

Operation Name	Printer support	Brief Description
Create-Docum <sup>2</sup>	REQUIRED	Creates a Document object with Document attributes, but no data.
Send-Data	REQUIRED	Sends data to the Document object created by Create-Docum.
Send-Docum *	REQUIRED	Creates a Document object with Document attributes and data.
Send-URI *	OPTIONAL	Creates a Document object with Document attributes and a URL reference to the data (print-by-reference).
Get-Docum-Attributes	REQUIRED	Get requested attributes of specified Document in the specified Job.
Get-Documents	REQUIRED	Get requested attributes of all of the Documents in the specified Job.
Set-Docum-Attributes	OPTIONAL	Set the supplied Document attributes on the specified Document.
Cancel-Docum	OPTIONAL	Cancel the specified Document in the specified Job, but don't remove it.
Cancel-Current-Docum	OPTIONAL	Cancel the current document that the Printer is printing.
Delete-Docum	OPTIONAL	Remove the specified Document object and its data from the Job.
Validate-Docum	REQUIRED	Validate that the supplied Document attributes are supported.

280 \* The existing IPP/1.1 operations defined in [RFC2911] with an extension so the client can supply Document  
 281 Template attributes.

282 This specification also specifies the life cycle of the Document object by defining the "document-state", "document-  
 283 state-reasons", and "document-state-message" attributes. Finally, the analogous Document Descriptions attributes  
 284 that correspond to the Job Description attributes are defined.

## 285 2 Terminology

286 This section defines terminology used throughout this document.

### 287 2.1 Conformance Terminology

288 Capitalized terms, such as **MUST**, **MUST NOT**, **REQUIRED**, **SHOULD**, **SHOULD NOT**, **MAY**, **NEED NOT**, and  
 289 **OPTIONAL**, have special meaning relating to conformance as defined in RFC 2119 [RFC2119] and [RFC2911]  
 290 section 12.1. If an implementation supports the extension defined in this document, then these terms apply;  
 291 otherwise, they do not. These terms define conformance to *this document (and [RFC2911]) only*; they do not affect  
 292 conformance to other documents, unless explicitly stated otherwise. To be more specific:

293 **REQUIRED** - an adjective used to indicate that a conforming IPP Printer implementation **MUST** support the indicated  
 294 operation, object, attribute, attribute value, status code, or out-of-band value in requests and responses. See  
 295 [RFC2911] "Appendix A - Terminology for a definition of "support". *Since support of this entire Document Object*  
 296 *specification is OPTIONAL for conformance to IPP/1.1, the use of the term REQUIRED in this document means*  
 297 *"REQUIRED if this OPTIONAL Document Object specification is implemented".*

298 **RECOMMENDED** - an adjective used to indicate that a conforming IPP Printer implementation is recommended to  
 299 support the indicated operation, object, attribute, attribute value, status code, or out-of-band value in requests and  
 300 responses. *Since support of this entire Document Object specification is OPTIONAL for conformance to IPP/1.1, the*  
 301 *use of the term RECOMMENDED in this document means "RECOMMENDED if this OPTIONAL Document Object*  
 302 *specification is implemented".*

<sup>2</sup> The Create-Docum operation maps to the PWG PSI Send-Docum-By-Post operation and the Send-Data maps to the HTTP Post operation.

303 **OPTIONAL** - an adjective used to indicate that a conforming IPP Printer implementation MAY, but is NOT  
304 REQUIRED to, support the indicated operation, object, attribute, attribute value, status code, or out-of-band value in  
305 requests and responses.

## 306 2.2 Other Terminology

307 This document uses the same terminology as [RFC2911], such as “**client**”, “**Printer**”, “**attribute**”, “**attribute value**”,  
308 “**keyword**”, “**Job Template attribute**”, “**Operation attribute**”, “**operation**”, “**request**”, “**response**”, and “**support**”  
309 with the same meaning. In addition, the following terms are defined for use in this document:

310 **Document object** - the object to represent the logical concept of a document in a Job. A **Job object** can contain  
311 one or more **Document objects**.

312 **Job Creation operation** - operations that create Job objects, specifically: Print-Job, Print-URI, and Create-Job as  
313 defined in [RFC2911].

314 **Document Creation operation** - operations that create Document objects. Specifically: Create-Document, Print-  
315 Job, Print-URI, Send-Document and Send-URI. Note: the Print-Job and Print-URI are both **Job Creation** and  
316 **Document Creation** operations, since they create both Job and a **Document object** at the same time. Also this  
317 specification does not extend the Print-Job and Print-URI operations. However, this specification does extend the  
318 Send-Document and Send-URI operations to allow the client to supply **Document Template** attributes in each  
319 request.

320 **Job Level** - attributes supplied in the Print-Job, Print-URI, and Create-Job are referred to as being supplied at the  
321 **Job Level**. Attributes supplied at the **Job Level** are a mixture of **Job attributes** and **Document attributes**. **Job**  
322 **attributes** apply to the Job as a whole, while **Document attributes** provide defaults for the **Document objects** in  
323 case the client does not supply a **Document attribute** at the **Document Level** for a **Document object**. Put another  
324 way, **Document objects** *inherit* **Document attributes** from the **Job object** which are used if the client didn't supply  
325 a corresponding attribute for the **Document object**.

326 **Document Level** - attribute supplied in the Send-Document, Send-URI, and Create-Document operations are  
327 referred to as being supplied at the **Document Level**. Note: attribute supplied in the Print-Job and Print-URI  
328 requests are considered as being supplied at the **Job Level** only, *not* also at the **Document Level**, even though  
329 Print-Job and Print-URI also create **Document objects**.

330 **Attribute Precedence** - the precedence rules which dictate which attribute value takes precedence when the same  
331 attribute is supplied at different points in the work flow with different values, such as at both the **Job Level** and the  
332 **Document Level**. See section 5.

333 **Job Attribute** - an **Operation attribute** or a **Job Template** attribute that applies to the Job (object) as a whole. For  
334 example, “job-name” is an **Operation attribute** and “job-priority” is a **Job Template attribute**.

335 **Document Template attribute** - an attribute that the client supplies in a Create-Document, Send-Document, or  
336 Send-URI operation request in the Document Attributes group. For example, “media”.

337 **Document attribute** - an **Operation attribute** or a **Document Template attribute** that applies to a **Document**  
338 **object** as a whole. For example, “document-format” is an **Operation attribute** and “media” is a **Document Template**  
339 **attribute**.

340 Table 2 shows this terminology as applied to the six operations. Note that Print-Job and Print-URI are both Job  
341 Creation operations and Document Creation operations, though they only create single Document jobs. In other  
342 words, for Print-Job and Print-URI, there is only one document per job, so whether the attributes are considered to be  
343 submitted at the Job Level and then inherited by the Document object, is moot, since these operations do not have a

344 separate Document group in which the client can supply Document attributes. Note also that for the “Level” concept,  
 345 no operation supplies attributes at more than one level.<sup>3</sup>

346 **Table 2 - Job Creation and Document Creation operations**

Job Creation operation	Document Creation operation	Operation	Attribute Group in Request		Level
			Job	Document	
yes		<b>Create-Job</b>	Job attributes and Document attributes		Job Level
yes	yes	<b>Print-Job</b>	Job attributes and Document attributes		
yes	yes	<b>Print-URI</b>	Job attributes and Document attributes		
	yes	<b>Create-Document</b>		Document attributes	Document Level
	yes	<b>Send-Document</b>		Document attributes	
	yes	<b>Send-URI</b>		Document attributes	

347

348 **Document Overrides** - a way for a client to specify attributes to apply to specified documents in a multi-document  
 349 job. Specifically, as member attributes of the “document-overrides” **Job Template attribute** in a **Job Creation**  
 350 operation or the “document-overrides” **operation attribute** in a **Document Creation operation** as defined in  
 351 [override]. Note: The **Document Template attributes** supplied in a Create-Document, Send-Document, or Send-  
 352 URI operation also “override” any Document Template attributes supplied in the Job Creation operation.

353 **3 Document Operations**

354 The Document object semantics are as parallel to the Job object semantics as possible. Therefore, most of the Job  
 355 operations have analogous Document operations as shown in Table 12 in section “Appendix A: Document operations  
 356 compared to Job operations”. Operations that can apply only to an entire job, have no analogous document  
 357 operation as indicated. This extension adds 8 new Document operations that operate on the Document object once  
 358 it is created by the new Create-Document operation or either of the existing two operations: Send-Document and  
 359 Send-URI operations.

360 Note: By Document object we mean the object once it become a contained part of a Job object, not before or after.  
 361 So in this specification a Document object does not represent data in a repository.

<sup>3</sup> The PWG Semantic Model [pwg-sm] calls the Operation attributes supplied by the client: Job Description attributes or Document Description attributes for the Job Creation and Document Creation operations, respectively. The [pwg-sm] also calls Job Template attributes and Document Template attributes: Job Processing and Document Processing attributes, respectively. Each Processing attribute is defined to be a Job Processing or a Document Processing attribute, but is not both. The client can supply both Job Processing and Document Processing attributes in a Job Creation operation, in which case the Document Processing attributes server as defaults for the Document objects. The Printer copies all of these client’s supplied attributes to the Job or Document object. Read-only Job and Document attributes that the system sets are called Job State and Document State attributes (instead of Description attributes).

## 362 3.1 Create-Document Operation

363 This REQUIRED operation allows a client to create a Document object, supply Document attributes, and have the  
364 Printer validate those attributes without sending any document content data. If the Printer rejects the request, the  
365 client won't have sent the possibly time-consuming data. The client MUST perform the operations in the following  
366 order: (1) Create-Job to create the Job object, (2) Create-Document to create the Document object, (3) Send-Data  
367 (see section 3.2) to send the content data for the Document object.

368 The client can supply multiple documents for a single Job using pairs of Create-Document and Send-Data  
369 operations. The order of the corresponding Send-Data operations is not important, so that the client can send pairs  
370 of Create-Document and Send-Data operations or can send a number of Create-Document operations followed by  
371 the corresponding Send-Data operations. The latter approach is useful if the client wants to make sure that all  
372 Documents will be accepted by the Printer before sending any of the Document data to the Printer.

373 If a Printer supports the Document object, the Printer:

- 374 1. MUST also support the Create-Document and Send-Data operations
- 375 2. MUST support the "multiple-operation-time-out" Printer Description attribute (see [RFC2911] section 4.4.31).
- 376 3. MUST support the "multiple-document-jobs-supported" Printer Description attribute (see [RFC2911] section  
377 4.4.16) with a 'true' value, that is the Printer MUST support multiple document jobs.
- 378 4. MUST support the "multiple-document-handling" Job Template job attribute with at least one value (see  
379 [RFC2911] section 4.2.4) and the associated "multiple-document-handling-default" and "multiple-document-  
380 handling-supported" Job Template Printer attributes (see [RFC2911] section 4.2). ISSUE 02: Do we want  
381 to say which values of "multiple-document-handling" a Printer MUST support? The defined values are:  
382 'single-document', 'single-document-new-sheet', 'separate-documents-uncollated-copies', and 'separate-  
383 documents-collated-copies'.
- 384 5. MUST support the Attribute Precedence semantics specified in section 5 for the levels that the Printer  
385 supports.

386 The Printer sets the value of the Document's "document-state" Document Description attribute to 'pending', if the  
387 Printer accepts the Create-Document request. A Printer MAY set the 'job-data-insufficient' value of the Document's  
388 "document-state-reason" Document Description attribute to indicate that processing cannot begin until sufficient data  
389 has arrived and set the "document-state" to 'pending'. A non-spooling printer that doesn't implement the 'pending'  
390 document state may even set the "document-state" to 'processing', even though there is not yet any data to process.  
391 See sections 8.3 and 8.5.

392 *Access Rights:* The authenticated user (see [RFC2911] section 8.3) performing this operation must either be the job  
393 owner (as determined in the Create-Job operation) or an operator or administrator of the Printer object (see  
394 [RFC2911] sections 1 and 8.5). Otherwise, the Printer MUST reject the operation and return: 'client-error-forbidden',  
395 'client-error-not-authenticated', or 'client-error-not-authorized' as appropriate.

### 396 3.1.1 Create-Document Request

397 The client supplies the following groups as part of the Create-Document Request:

#### 398 Group 1: Operation Attributes

399 **Natural Language and Character Set:**  
400 First, the client MUST supply the "attributes-charset" and "attributes-natural-language" Operation attributes  
401 as described in [RFC2911] section 3.1.4.1. The Printer object MUST copy these values to the corresponding  
402 Job Description attributes described in [RFC2911] sections 4.3.19 and 4.3.20.

403 **Target:**  
404 Next, the client MUST supply either (1) the "printer-uri" (uri) plus "job-id" (integer(1:MAX)) or (2) the "job-uri"  
405 (uri) operation attribute(s) which define the target Job object for this operation as described in [RFC2911]  
406 section 3.1.5. The client MAY supply the remaining Operation attributes in any order following:

#### 407 3.1.1.1 "document-number" (integer(1:MAX)) operation attribute:

408 The client MAY supply the "document-number" Operation attribute to indicate which Document object in the  
409 Job this Create-Document is to apply. Usually the client omits this Operation attribute, so that the Printer  
410 assigns the next integer value starting at 1 for each Job. A client that is creating multiple Document objects  
411 in parallel MAY wish to supply this attribute in order to control the order of the Documents in the job. If  
412 supplied, the Printer copies the value to the Document object's "document-number" Document Description  
413 attribute.

#### 414 3.1.1.2 "last-document" (boolean):

415 The client MUST supply this attribute (as in the Send-Document and Send-URI operation requests). The  
416 Printer object MUST support this attribute. This attribute is a boolean flag that the client supplies with a 'true'  
417 value if this is the last document for the Job, 'false' otherwise.

#### 418 Additional Operation attributes in any order:

419 Any of the other Operation attributes indicated in the "Level Supplied" column labeled with a "y" in the "Doc"  
420 column in Table 4, such as "document-name" and "document-format". These operation attributes are said to  
421 be supplied at the Document Level and apply to the Document object, overriding any operation attributes  
422 supplied at the Job Level. For example, if "document-format" = 'application/postscript' at the Job Level and  
423 "document-format" = 'text/plain' in this Create-Document request, this Document will be 'text/plain'. If the  
424 next Create-Document request for this Job omits the "document-format" operation attribute, that Document  
425 will be 'application/postscript'.

### 426 Group 2: Document Template Attributes

#### 427 Any Document Template attributes in any order:

428 The client OPTIONALLY supplies a set of Document Template attributes, that is any attributes indicated in  
429 Table 6 in the "Defined for use" column labeled with a "y" in the "D" column. These Document Template  
430 attributes are said to be supplied at the Document Level and apply to the Document object, overriding any  
431 Document Template attributes supplied at the Job Level. For example, if "media" = 'na-letter-white' at the  
432 Job Level and "media" = 'na-letter-transparency' in this Create-Document request, this Document will be 'na-  
433 letter-transparency'. If the next Create-Document operation for this Job omits the "media" operation attribute,  
434 that Document will be 'na-letter-white' which it inherits from the Job.

435 If the client is not supplying any Document Template attributes in the request, the client SHOULD omit Group  
436 2 rather than sending an empty group. However, a Printer object MUST be able to accept an empty group.

437 The client MUST NOT supply the document data in this operation request. See Send-Data operation.

438 In addition to the MANDATORY parameters required for every operation request (see [RFC2911]), the simplest  
439 Create-Document request consists of just the "attributes-charset" and "attributes-natural-language" operation  
440 attributes; either (1) the "printer-uri" target operation attribute and the "job-id" or (2) the "job-uri" and nothing else. In  
441 this simple case, the Printer object:

- 442 - creates a new Document object and adds it to the specified Job object,
- 443 - assigns the lowest document number not yet used by this Job, if the client did not supply a "document-number"
- 444 operation attribute (see section 3.1.1.1). Copy the document number assigned or supplied to the
- 445 Document object's "document-number" Document Description attribute.
- 446 - stores a generated Document name in the "document-name" Document Description attribute in the natural
- 447 language and charset requested (see [RFC2911] section 3.1.4.1) (if those are supported, otherwise using
- 448 the Printer object's default natural language and charset), and
- 449 - at job processing time, uses its corresponding default value attributes for the supported Document Template
- 450 attributes that were (1) not supplied by the client as IPP attributes and (2) not embedded instructions in the
- 451 document data.

### 452 3.1.2 Create-Document Response

453 The Printer object MUST return the following sets of attributes to the client as part of the Create-Job response:

#### 454 Group 1: Operation Attributes

##### 455 Status Message:

456 In addition to the REQUIRED status code returned in every response, the response OPTIONALLY includes a

457 "status-message" (text(255)) and/or a "detailed-status-message" (text(MAX)) operation attribute as described

458 in [RFC2911] sections 13 and 3.1.6. If the client supplies unsupported or conflicting Job Template attributes

459 or values, the Printer object MUST reject or accept the Print-Job request depending on the whether the client

460 supplied a 'true' or 'false' value for the "ipp-attribute-fidelity" operation attribute or the name of one of the

461 attributes with unsupported values in the "job-mandatory-attributes" operation attribute. See the

462 Implementer's Guide [RFC3196] for a complete description of the suggested steps for processing the

463 attributes in a create request.

##### 464 Natural Language and Character Set:

465 The "attributes-charset" and "attributes-natural-language" attributes as described in [RFC2911] section

466 3.1.4.2.

#### 467 Group 2: Unsupported Attributes

468 See [RFC2911] section 3.1.7 for details on returning Unsupported Attributes.

469 The value of the "ipp-attribute-fidelity" and "job-mandatory-attributes" operation attributes supplied by the

470 client does not affect what attributes the Printer object returns in this group. The value of these two

471 operation attributes only affects whether the Create-Job operation is accepted or rejected. If the Document

472 is accepted, the client may query the Document object using the Get-Document-Attributes operation

473 requesting the unsupported attributes that were returned in the create response to see which attributes were

474 ignored (not stored on the Document object) and which attributes were stored with other (substituted) values.

#### 475 Group 3: Document Object Attributes

476 The Printer returns the following Document Description Attributes and Job Description Attributes:

##### 477 3.1.2.1 document-number (integer(1:MAX))

##### Document Description attribute

478 The Printer MUST return the document number of this Document object that was either assigned by the

479 Printer (see section 3.1.1) or supplied by the client (see section 3.1.1.1).



516       **Requesting User Name:**  
517           The "requesting-user-name" (name(MAX)) attribute SHOULD be supplied by the client as described in  
518           [RFC2911] section 8.3.

## 519   **Group 2: Document Content**

520           The client MUST supply the document data in-line to be processed for this Document.

### 521   **3.2.2 Send-Data Response**

522   The following sets of attributes are part of the Send-Data Response:

#### 523   **Group 1: Operation Attributes**

##### 524       **Status Message:**

525           In addition to the REQUIRED status code returned in every response, the response OPTIONALLY includes a  
526           "status-message" (text(255)) and/or a "detailed-status-message" (text(MAX)) operation attribute as described  
527           in [RFC2911] sections 13 and 3.1.6.

##### 528       **Natural Language and Character Set:**

529           The "attributes-charset" and "attributes-natural-language" attributes as described in [RFC2911] section  
530           3.1.4.2.

#### 531   **Group 2: Unsupported Attributes**

532           See [RFC2911] section 3.1.7 for details on returning Unsupported Attributes.

#### 533   **Group 3: Job Object Attributes**

534           This is the same set of attributes as described in the Create-Job response (see [RFC2911] section 3.2.1.2).

## 535   **3.3 Send-Document Operation**

536   This REQUIRED<sup>4</sup> operation allows a client to submit multiple documents in a single Job by making a Send-Document  
537   request for each Document. In this specification, the Send-Document creates a Document object ([RFC2911] did not  
538   have a Document object). A Printer MUST support this operation with the semantics specified in [RFC2911] and with  
539   the extension defined in this specification, since this specification REQUIRES the Printer to support multiple  
540   document jobs.

541   See [RFC2911] section 3.3.1 for the semantics of the Send-Document operation not reproduced here.

542   *Access Rights:* The authenticated user (see [RFC2911] section 8.3) performing this operation must either be the job  
543   owner (as determined in the Create-Job operation) or an operator or administrator of the Printer object (see  
544   [RFC2911] sections 1 and 8.5). Otherwise, the Printer MUST reject the operation and return: 'client-error-forbidden',  
545   'client-error-not-authenticated', or 'client-error-not-authorized' as appropriate.

### 546   **3.3.1 Send-Document Request**

547   The following attribute sets are part of the Send-Document Request:

---

<sup>4</sup> The Send-Document operation is REQUIRED in this specification while it was OPTIONAL in [RFC2911]. This difference is because this specification REQUIRES Printer support of multiple document jobs, while [RFC2911] did not.



548 **Group 1: Operation Attributes** (as in [RFC2911])

549 As specified in [RFC2911] section 3.3.1, plus any extensions indicated in Table 4. For example,  
550 "compression", "document-format", and "document-name".

551 **Group 2: Document Attributes** (new - not in [RFC2911])

552 The client OPTIONALLY supplies a set of Document Template attributes as listed in Table 6. For example,  
553 "media" and "number-up". If the client is not supplying any Document Template attributes in the request, the  
554 client SHOULD omit Group 2 rather than sending an empty group. However, a Printer object MUST be able  
555 to accept an empty group.

556 **Group 3: Document Content** (as in [RFC2911])

557 The client MUST supply the document data in-line to be processed for this Document if the "last-document"  
558 flag is set to 'false'. However, since a client might not know that the previous Document object created with a  
559 Create-Job, Send-Document, or Send-URI operation was the last document (i.e., the "last-document"  
560 attribute was set to 'false'), it is legal to send a Send-Document request with no document data where the  
561 "last-document" flag is set to 'true'. For this case, the Printer MUST NOT increment the value of the Job  
562 object's "number-of-documents" attribute, since no Document object was added to the job. In addition, it is  
563 not an error for a client to submit a job with no actual document data, i.e., only a single Create-Job and  
564 Send-Document request with a "last-document" operation attribute set to 'true' with no document data; it is  
565 only an empty job which is scheduled and processed normally.

566 **3.3.2 Send-Document Response**

567 The following sets of attributes are part of the Send-Document Response:

568 **Group 1: Operation Attributes** (as in [RFC2911])

569 **Status Message:**

570 In addition to the REQUIRED status code returned in every response, the response OPTIONALLY includes a  
571 "status-message" (text(255)) and/or a "detailed-status-message" (text(MAX)) operation attribute as described  
572 in [RFC2911] sections 13 and 3.1.6.

573 **Natural Language and Character Set:**

574 The "attributes-charset" and "attributes-natural-language" attributes as described in [RFC2911] section  
575 3.1.4.2.

576 **Group 2: Unsupported Attributes** (as in [RFC2911])

577 See [RFC2911] section 3.1.7 for details on returning Unsupported Attributes.

578 **Group 3: Job Object Attributes** (as in [RFC2911])

579 The Printer returns the same set of attributes as described in the Print-Job response (see [RFC2911] section  
580 3.2.1.2).

581 **Group 4: Document Object Attributes** (new - as in Create-Document Group 3 - see section 3.1.2)

582 The Printer returns the same set of attributes as described in the Create-Document response (see section  
583 3.1.2).

### 584 3.4 Send-URI Operation

585 This OPTIONAL operation is identical to the Send-Document operation (see section 3.2) except that a client MUST  
586 supply a URI reference ("document-uri" operation attribute) rather than the document data itself. If a Printer object  
587 supports this operation, clients can use both Send-URI or Send-Document operations to add new documents to an  
588 existing multi-document Job object. However, if a client needs to indicate that the previous Send-URI or Send-  
589 Document was the last document, the client MUST use the Send-Document operation with no document data and  
590 the "last-document" flag set to 'true' (rather than using a Send-URI operation with no "document-uri" operation  
591 attribute).

592 If a Printer object supports this operation, it MUST also support the Print-URI operation (see [RFC2911] section  
593 3.2.2).

594 The Printer object MUST validate the syntax and URI scheme of the supplied URI before returning a response, just  
595 as in the Print-URI operation. The IPP Printer MAY validate the accessibility of the document as part of the operation  
596 or subsequently (see [RFC2911] section 3.2.2).

### 597 3.5 Get-Document-Attributes Operation

598 This REQUIRED operation allows a client to request the values of selected attributes of a Document object. This  
599 operation is almost identical to the Get-Job-Attributes operation (see [RFC2911] section 3.3.4). The only differences  
600 are that the operation is directed at a Document object rather than a Job object and the returned attribute group is a  
601 set of Document object attributes rather than a set of Job object attributes.

602 The Printer MUST return the attributes that a client supplied in the Create-Document, Send-Document, or Send-URI  
603 operations, plus any Document Description attributes that the Printer has generated. The Printer MUST NOT return  
604 any Job Level attributes that the Document object inherits, including "document-overrides" (1setOf collection)  
605 member attributes (see [override]), and MUST NOT factor out common Document object attributes and return them  
606 as Job object attributes. Thus the Get-Document-Attributes returns to clients the attributes that clients submitted with  
607 the Job object and with the Document object.

608 The client MAY display to the user any Document attributes inherited from the Job object. However, such a client  
609 MUST query both the Job object using Get-Job-Attributes and the Document object using Get-Document-Attributes  
610 in order to be able to merge the inherited attributes with the explicitly-supplied Document attributes. Furthermore, the  
611 client MAY factor out common explicitly-supplied Document object attributes and display them once as Job object  
612 attributes, instead of with each Document object. However, any such regularization of the display for users is the  
613 policy of the client and is outside the scope of this client-Printer protocol specification. Note: specify any such  
614 regularization or canonicalization policy in the Printer response would have been impossible to agree to.

615 For Document objects, the possible names of attribute groups are:

616 - 'document-template': the subset of the Document Template attributes that apply to a Document object (the "D"  
617 column in Table 6) that the implementation supports for Document objects.

618 - 'document-description': the subset of the Document Description attributes specified in the "Doc" column of  
619 Table 7 that the implementation supports for Document objects.

620 - 'all': the special group 'all' that includes all attributes that the implementation supports for Document objects.

621 Since a client MAY request specific attributes or named groups, there is a potential that there is some overlap. For  
622 example, if a client requests, 'document-name' and 'document-description', the client is actually requesting the  
623 "document-name" attribute once by naming it explicitly, and once by inclusion in the 'document-description' group. In

624 such cases, the Printer object NEED NOT return the attribute only once in the response even if it is requested  
625 multiple times. The client SHOULD NOT request the same attribute in multiple ways.

626 It is NOT REQUIRED that a Document object to support all attributes belonging to a group (since some attributes are  
627 OPTIONAL). However, it is REQUIRED that the Printer support all these group names for the Document object.

### 628 3.5.1 Get-Document-Attributes Request

629 The following groups of attributes are part of the Get-Document-Attributes Request when the request is directed at a  
630 Document object:

#### 631 Group 1: Operation Attributes

##### 632 Natural Language and Character Set:

633 The "attributes-charset" and "attributes-natural-language" attributes as described in [RFC2911] section  
634 3.1.4.1.

##### 635 Target:

636 The "document-number" (integer(1:MAX)) MUST be supplied along with either (1) the "printer-uri" (uri) plus  
637 "job-id" (integer(1:MAX)) or (2) the "job-uri" (uri) operation attribute(s) which define the target Document  
638 object for this operation as described in [RFC2911] section 3.1.5.

##### 639 Requesting User Name:

640 The "requesting-user-name" (name(MAX)) attribute SHOULD be supplied by the client as described in  
641 [RFC2911] section 8.3.

##### 642 "requested-attributes" (1setOf keyword):

643 The client OPTIONALLY supplies this attribute. The Printer MUST support this attribute. It is a set of  
644 attribute names and/or attribute group names in whose values the requester is interested. If the client omits  
645 this attribute, the Printer MUST respond as if this attribute had been supplied with a value of 'all'.

### 646 3.5.2 Get-Document-Attributes Response

647 The Printer object returns the following sets of attributes as part of the Get-Document-Attributes Response:

#### 648 Group 1: Operation Attributes

##### 649 Status Message:

650 In addition to the REQUIRED status code returned in every response, the response OPTIONALLY includes a  
651 "status-message" (text(255)) and/or a "detailed-status-message" (text(MAX)) operation attribute as described  
652 in [RFC2911] sections 13 and 3.1.6.

##### 653 Natural Language and Character Set:

654 The "attributes-charset" and "attributes-natural-language" attributes as described in [RFC2911] section  
655 3.1.4.2. The "attributes-natural-language" MAY be the natural language of the Document object, rather than  
656 the one requested.

#### 657 Group 2: Unsupported Attributes

658 See [RFC2911] section 3.1.7 for details on returning Unsupported Attributes.

659 The response NEED NOT contain the "requested-attributes" operation attribute with any supplied values  
660 (attribute keywords) that were requested by the client but are not supported by the Printer. If the Printer  
661 object does return unsupported attributes referenced in the "requested-attributes" operation attribute and that

662 attribute included group names, such as 'all', the unsupported attributes MUST NOT include attributes  
663 described in the standard but not supported by the implementation.

### 664 **Group 3: Document Object Attributes**

665 This is the set of requested attributes and their current values. The Printer ignores (does not respond with)  
666 any requested attribute or value which is not supported. Furthermore, the Printer MUST NOT return  
667 Document Template attributes that were not supplied by a client in a Create-Document, Send-Document, or  
668 Send-URI request or set by a Set-Document-Attributes request. So the response reflects what was  
669 submitted. The Printer MAY omit returning attributes that are restricted by the Printer's security policy in  
670 force, including whether the requesting user is the user that submitted the job (job originating user) or not  
671 (see [RFC2911] section 8). However, the Printer MUST respond with the 'unknown' value for any supported  
672 attribute (including all REQUIRED attributes) for which the Printer does not know the value, unless it would  
673 violate the security policy. See the description of the "out-of-band" values in the beginning of [RFC2911]  
674 Section 4.1.

## 675 **3.6 Get-Documents Operation**

676 This REQUIRED operation allows a client to retrieve the list of Document objects belonging to the target Job object.  
677 The client MAY also supply a list of Document attribute names and/or attribute group names. A group of Document  
678 object attributes will be returned for each Document object in the Job.

679 This operation is similar to the Get-Document-Attributes operation (see section 3.5), except that this Get-Documents  
680 operation returns attributes from all Document objects contained in the Job object, instead of from a single selected  
681 Document object in the Job object. As with the Get-Document-Attributes operation the Printer MUST only return  
682 attributes that were submitted by a client when the Document object was created by the Create-Document, Send-  
683 Document, or Send-URI operations and possibly modified by the Set-Document-Attributes operation (see section  
684 3.7).

### 685 **3.6.1 Get-Documents Request**

686 The client submits the Get-Documents request to a Printer object. The Get-Documents is similar to the Get-Jobs  
687 operations (see [RFC2911] section 3.2.6) except that there are no equivalents to the "which-jobs" and "my-jobs"  
688 operation attributes.

689 The following groups of attributes are part of the Get-Documents Request:

#### 690 **Group 1: Operation Attributes**

##### 691 **Natural Language and Character Set:**

692 The "attributes-charset" and "attributes-natural-language" attributes as described in [RFC2911] section  
693 3.1.4.1.

##### 694 **Target:**

695 Either (1) the "printer-uri" (uri) plus "job-id" (integer(1:MAX)) or (2) the "job-uri" (uri) operation attribute(s)  
696 which define the target Job object for this operation as described in [RFC2911] section 3.1.5.

##### 697 **Requesting User Name:**

698 The "requesting-user-name" (name(MAX)) attribute SHOULD be supplied by the client as described in  
699 [RFC2911] section 8.3.

700 **"limit" (integer(1:MAX)):**  
701 The client OPTIONALLY supplies this attribute. The Printer object MUST support this attribute. It is an  
702 integer value that determines the maximum number of Documents that a client will receive from the Printer.  
703 The limit is a "stateless limit" in that if the value supplied by the client is 'N', then only the first 'N' Documents  
704 are returned in the Get-Documents Response. There is no mechanism to allow for the next 'M' Documents  
705 after the first 'N' Documents. If the client does not supply this attribute, the Printer object responds with all  
706 Documents.

707 **"requested-attributes" (1setOf type2 keyword):**  
708 The client OPTIONALLY supplies this attribute. The Printer object MUST support this attribute. It is a set of  
709 Document attribute names and/or attribute groups names in whose values the requester is interested. This  
710 set of attributes is returned for each Document object that is returned. The allowed attribute group names  
711 are the same as those defined in the Get-Documents operation in section 3.5.1.

712 If the client does not supply this attribute, the Printer MUST respond as if the client had supplied this attribute  
713 with the three values: 'document-number', 'document-state', and 'document-state-reasons'. **ISSUE 03: Are**  
714 **the 3 attributes: 'document-number', 'document-state', and 'document-state-reasons' the right attributes to**  
715 **return when the client does not supply the "requested-attributes" operation attribute? Should we include the**  
716 **"document-id-uri" (uri) attribute that the Printer generates as well?**

### 717 3.6.2 Get-Documents Response

718 The Printer object returns all of the Document objects up to the number specified by the "limit" attribute that match  
719 the criteria as defined by the attribute values supplied by the client in the request. If the client requests any  
720 Document attributes at all, there is a set of Document Object Attributes returned for each Document object.

721 It is not an error for the Printer to return 0 Documents. If the response returns 0 Documents because there are no  
722 Documents in the Job, then the status code for 0 Documents MUST be 'successful-ok'.

#### 723 Group 1: Operation Attributes

724 **Status Message:**  
725 In addition to the REQUIRED status code returned in every response, the response OPTIONALLY includes a  
726 "status-message" (text(255)) and/or a "detailed-status-message" (text(MAX)) operation attribute as described  
727 in [RFC2911] sections 13 and 3.1.6.

728 **Natural Language and Character Set:**  
729 The "attributes-charset" and "attributes-natural-language" attributes as described in [RFC2911] section  
730 3.1.4.2.

#### 731 Group 2: Unsupported Attributes

732 See [RFC2911] section 3.1.7 for details on returning Unsupported Attributes.

733 The response NEED NOT contain the "requested-attributes" operation attribute with any supplied values  
734 (attribute keywords) that were requested by the client but are not supported by the IPP object. If the Printer  
735 object does return unsupported attributes referenced in the "requested-attributes" operation attribute and that  
736 attribute included group names, such as 'all', the unsupported attributes MUST NOT include attributes  
737 described in the standard but not supported by the implementation.

#### 738 Groups 3 to N: Document Object Attributes

739 The Printer object responds with one set of Document Object Attributes for each returned Document object.  
740 The Printer object ignores (does not respond with) any requested attribute or value which is not supported or

741 which is restricted by the security policy in force, including whether the requesting user is the user that  
742 submitted the job (job originating user) or not (see [RFC2911] section 8). However, the Printer object MUST  
743 respond with the 'unknown' value for any supported attribute (including all REQUIRED attributes) for which  
744 the Printer object does not know the value, unless it would violate the security policy. See the description of  
745 the "out-of-band" values in the beginning of [RFC2911] section 4.1.

746 The Printer MUST return the Groups in order of increasing "document-number" attribute value.

### 747 **3.7 Set-Document-Attributes Operation**

748 This OPTIONAL operation allows a client to set the values of the attributes of a Document object after the Document  
749 object was submitted to the Printer. In the request, the client supplies the set of Document keyword attribute names  
750 and values that are to be set. In the response, the IPP object returns success or rejects the entire request with  
751 indications of which attribute or attributes could not be set.

752 This operation is almost identical to the Set-Job-Attributes operation and follows the same rules for validation (see  
753 [set-ops] section 4.2). The only differences are that the Set-Document-Attributes operation is directed at a Document  
754 object rather than a Job object. As with the Set-Job-Attributes operation, The Set-Document-Attributes operation  
755 can add an attribute to the Target object, accepts the 'delete-attributes' out-of-band value to remove an attribute from  
756 the Target object. In addition the validation is the same as the Create-Document, Send-Document, and Send-URI  
757 operations that create Document objects, i.e., the Printer validation depends on the "xxx-supported" Printer  
758 Description attributes (see [RFC2911] section 3.1).

759 If a client supplies a document attribute in a Set-Document-Attributes request that the Printer supports, and the  
760 document was originally submitted without supplying that attribute, the Printer adds the attribute to the Document  
761 object.

762 If the client supplies a document attribute with the "out-of-band" value 'delete-attribute' (see [set-ops] section 8.2),  
763 then the Printer MUST remove the attribute and all of its values from the Document object, if present. The semantic  
764 effect of the client supplying the 'delete-attribute' value in a Set-Document-Attributes operation MUST be the same as  
765 if the attribute had not been supplied with the Document object in the Document Creation operation, i.e., the Printer  
766 applies its default attribute or behavior with lower precedence than the PDL (see the beginning of [RFC2911] section  
767 4.2 and [RFC2911] 3.2.1.1). Any subsequent query of the Document object using Get-Document-Attributes or Get-  
768 Documents MUST NOT return any attribute that has been deleted using the 'delete-attribute' out-of-band value.  
769 However, a client can re-establish such a deleted Document attribute with any supported value(s) using a  
770 subsequent Set-Document-Attributes operation.

771 If the client supplies an attribute in a Set-Document-Attributes request with the 'delete-attribute' value and that  
772 attribute is not present on the Document object, the Printer ignores that supplied attribute in the request, does not  
773 return the attribute in the Unsupported Attributes group, and returns the 'successful-ok' status code, if there are no  
774 other problems with the request.

775 The validation of the Set-Document-Attributes request is performed by the Printer as if the document had been  
776 submitted originally with the new attribute values (and the deleted attributes removed) and with "ipp-attribute-fidelity"  
777 set to 'true', i.e., all modified attributes Document attributes and values MUST be supported in combination with the  
778 Document attributes not modified. If such a Document Creation operation would have been accepted, then the Set-  
779 Document-Attributes MUST be accepted. If such a Document Creation operation would have been rejected, then the  
780 Set-Document-Attributes MUST be rejected and the Document MUST be unchanged. In addition, if any of the  
781 supplied attributes are not supported, are not settable, or the values are not supported, the Printer object MUST  
782 reject the entire operation; the Printer object MUST NOT partially set some of the supplied attributes. In other words,  
783 after the operation, all the supplied attributes MUST be set or none of them MUST be set, thus making the Set-  
784 Document-Attributes an atomic operation.

785 The IPP object MUST accept or reject this operations when the Document's READ-ONLY "document-state" attribute  
 786 has the values shown in Table 3. The document's current state MUST affect whether the IPP object accepts or  
 787 rejects the request. However, the Set-Document-Attributes operation MUST NOT change the state of the Document  
 788 object (since the Document is a passive object and the Document state is a subset of the Job State). For example,  
 789 in the case where the operation creates a request for unavailable resources, the Job (but not the Document)  
 790 transitions to a new state. Table 3 shows the allowed behaviors in each document state.

791

**Table 3 - Document State Table for the Set-Document-Attributes operation**

Current "document-state"	New "document-state" (no change)	IPP object's response status code and "action":
'pending'	'pending'	'successful-ok'
'pending'	'pending'	'successful-ok' - needed resources are not ready (the Job MAY change state, but the Document MUST NOT).
'processing'	'processing'	'successful-ok' or 'client-error-not-possible' depending on implementation, including the attributes being set, whether the document has started marking media, etc.
'completed'	'completed'	'client-error-not-possible'
'canceled'	'canceled'	'client-error-not-possible'
'aborted'	'aborted'	'client-error-not-possible'

792

793 This operation MUST NOT change the value of attributes not specified in the operation unless the definition of the  
 794 attribute explicitly specifies such side-effects. In general, Document attribute definitions that are settable will not  
 795 define side-effects on other attributes that are settable, only side effects on READ-ONLY attributes, if any.

### 796 3.7.1 Settable and READ-ONLY Document Description attributes

797 If the Printer supports the Set-Document-Attributes operation, then it SHOULD support setting of:  
 798 all Document Template document ("xxx") attributes  
 799 that the implementation supports (see the column labeled "D" in Table 6).

800 Almost all Document Description attributes (see [RFC2911] section 4.3) MUST NOT be settable, i.e., they are  
 801 defined to be READ-ONLY. Only Document Description attributes marked with "(r/w)" in Table 6 MAY be settable  
 802 using Set-Document-Attributes. The Printer MUST reject a Set-Document-Attributes request that attempts to set any  
 803 attributes in Table 6 that is not marked "(r/w)".

804 Note: From now on, all extensions that define new object attributes will indicate whether or not the attributes are  
 805 READ-ONLY, by including the "READ-ONLY" adjective in their descriptions and/or explicitly stating whether they  
 806 MAY be settable.

807 *Access Rights:* The authenticated user (see [RFC2911] section 8.3) performing this operation must either be the job  
 808 owner (as determined in the Job Creation operation) or an operator or administrator of the Printer object (see  
 809 [RFC2911] Sections 1 and 8.5).

### 810 3.7.2 Set-Document-Attributes Request

811 The following sets of attributes are part of the Set-Document-Attributes Request:

#### 812 Group 1: Operation Attributes

##### 813 Natural Language and Character Set:

814 The "attributes-charset" and "attributes-natural-language" attributes as described in [RFC2911] section  
815 3.1.4.1.

##### 816 Target:

817 The "document-number" (integer(1:MAX)) MUST be supplied along with either (1) the "printer-uri" (uri) plus  
818 "job-id" (integer(1:MAX)) or (2) the "job-uri" (uri) operation attribute(s) which define the target Document  
819 object for this operation as described in [RFC2911] section 3.1.5. **ISSUE 04: OK that we don't have a way  
820 to set all documents in a single request? The Printer MUST reject the request with 'client-error-bad-request',  
821 if the client does not supply the "document-number" operation attribute. There is no way to set all documents  
822 explicitly in a single request, since a failure would require the Printer to back out all changes in all  
823 documents. However, if the client sets the corresponding attribute at the Job Level using the Set-Job-  
824 Attributes operation, all documents in the job will be affected that don't have that attribute explicitly supplied  
825 at the Document Level.**

##### 826 Requesting User Name:

827 The "requesting-user-name" (name(MAX)) attribute SHOULD be supplied by the client as described in  
828 [RFC2911] section 8.3.

#### 829 Group 2: Document Attributes

830 The client MUST supply a set of Document Template attributes with one or more values (including explicitly  
831 allowed out-of-band values) as listed in column labeled "D" in Table 6 - Job Template and Document  
832 Template attributes and Document Description attributes flagged with "(r/w)" and listed in the column labeled  
833 "Doc" in Table 7 - Job and Document Description attributes, and any attribute extensions supported by the  
834 Printer. The value(s) of each Document attribute supplied in Group 2 replaces the value(s) of the  
835 corresponding Document attribute on the target Document object. For attributes that can have multiple  
836 values (1setOf), all values supplied by the client replace all values of the corresponding Document object  
837 attribute.

838

839 If the client supplies an "xxx" attribute with the 'delete-attribute' out-of-band value (see [set-ops] section 8.2),  
840 the Printer MUST remove the "xxx" attribute from the Document object, if present.

841

### 842 3.7.3 Set-Document-Attributes Response

843 The IPP object returns the following sets of attributes as part of the Set-Document-Attributes Response:

#### 844 Group 1: Operation Attributes

##### 845 Status Message:

846 In addition to the REQUIRED status code returned in every response, the response OPTIONALLY includes a  
847 "status-message" (text(255)) and/or a "detailed-status-message" (text(MAX)) operation attribute as described  
848 in [RFC2911] sections 13 and 3.1.6.



849 **Natural Language and Character Set:**  
850 The "attributes-charset" and "attributes-natural-language" attributes as described in [RFC2911] section  
851 3.1.4.2.

## 852 **Group 2: Unsupported Attributes**

853 See [RFC2911] section 3.1.7 for details on returning Unsupported Attributes.

854 If some of the attributes in the operation fail to validate, the Printer MUST reject the operation, MUST NOT  
855 change any Document attributes, and MUST return the indicated status code below. In this group, the  
856 Printer MUST also return all attributes that fail to validate. The following are the reasons that an attribute  
857 fails to validate and the value returned for the attribute, along with the indicated status code and order of  
858 detection:

- 859 1. The number of attributes supplied by the client exceeds the maximum number that the Printer  
860 supports in a Set-Printer-Attributes request: return the 'client-error-request-entity-too-large' (see  
861 [RFC2911] section 13.1.4.9).
- 862 2. The Printer doesn't support the attribute: return the attribute with the 'unsupported' out-of-band  
863 attribute value (see [RFC2911] section 3.1.7 and [RFC2910]) and the 'client-error-attributes-or-  
864 values-not-supported' (see [RFC2911] section 13.1.4.12).
- 865 3. The attribute is READ-ONLY (in its definition) or is not-settable in this implementation: return the  
866 attribute with the 'not-settable' out-of-band attribute value (see [set-ops] section 8.1) and the  
867 'client-error-attributes-not-settable' status code (see [set-ops] section 7.1).
- 868 4. The Printer doesn't support the value: if the attribute in the operation has a single value return it.  
869 If the attribute in the operation is multi-valued, return only those values in a 1setOf that are not  
870 supported. Return the 'client-error-attributes-or-values-not-supported' status code (see [RFC2911]  
871 section 13.1.4.12).
- 872 5. The values of some of the supplied attributes conflict with one another and/or other Document  
873 attribute values not being set: if the conflicting attribute in the operation has a single value return  
874 the attribute and the value. If the attribute in the operation is multi-valued, return only the attribute  
875 and those values in a 1setOf that are conflicting with other attributes. Return the 'client-error-  
876 conflicting-attributes' status code (see [RFC2911] section 13.1.4.15).

## 877 **3.8 Cancel-Document Operation**

878 This OPTIONAL<sup>5</sup> operation allows a client to cancel a specified Document in a specified Print Job from the time the  
879 Document is created up to, but not including, the time it is completed, canceled, or aborted. Since a Document might  
880 already be printing by the time a Cancel-Document is received, some media sheet pages might be printed before the  
881 document is actually terminated.

882 **ISSUE 05: OK, that Cancel-Document operation is OPTIONAL, while the Cancel-Job operation is REQUIRED by**  
883 **[RFC2911]?**

884 The Cancel-Document operation does not remove the Document from the Job and Printer, but only sets the specified  
885 Document's "document-state" Document Description attribute to 'canceled' and the Document's "document-state-  
886 reasons" Document Description attribute to 'canceled-by-user' or 'cancel-by-operator'. If the Job object is printed  
887 again using operations such as the Reprocess-Job operation (see [adm-ops] section 4.1) or the Restart-Job  
888 operation (see [RFC2911] section 3.3.7), any canceled Documents are also printed again. Thus Cancel-Document

---

<sup>5</sup> The Cancel-Document operation is OPTIONAL, whereas the corresponding Cancel-Job is REQUIRED.

889 has the same semantics as Cancel-Job (see [RFC2911] section 3.3.3), which only cancels the processing of the job,  
 890 and doesn't delete the Job object itself. See the Delete-Document operation (section 3.10) to remove the Document  
 891 object itself immediately from the Job and Printer.

892 The Cancel-Document operation does not affect the states of any of the other Document objects in the job. If the Job  
 893 was processing and there are more Documents to be processed, the Printer does so. If there are no further  
 894 Documents to process, the Job moves to the 'completed' state as usual whenever there is no more processing to be  
 895 done.

896 The IPP object MUST accept or reject the request based on the document's current state and transition the  
 897 document to the indicated new state as follows:

Current "document-state"	New "document-state"	Printer object's response status code and action:
'pending'	'canceled'	'successful-ok'
'processing'	'canceled'	'successful-ok'
'processing'	'processing'	'successful-ok' See Rule 1
'processing'	'processing'	'client-error-not-possible' See Rule 2
'completed'	'completed'	'client-error-not-possible'
'canceled'	'canceled'	'client-error-not-possible'
'aborted'	'aborted'	'client-error-not-possible'

898 Rule 1: If the implementation requires some measurable time to cancel the document in the 'processing' document  
 899 states, the Printer object MUST add the 'processing-to-stop-point' value to the document's "document-state-reasons"  
 900 attribute and then transition the document to the 'canceled' state when the processing ceases (see [RFC2911]  
 901 section 4.3.8).

902 Rule 2: If the Document object already has the 'processing-to-stop-point' value in its "document-state-reasons"  
 903 attribute, then the Printer object MUST reject a Cancel-Document operation.

904 *Access Rights:* The authenticated user (see [RFC2911] section 8.3) performing this operation must either be the job  
 905 owner or an operator or administrator of the Printer object (see [RFC2911] sections 1 and 8.5). Otherwise, the IPP  
 906 object MUST reject the operation and return: 'client-error-forbidden', 'client-error-not-authenticated', or 'client-error-  
 907 not-authorized' as appropriate.

908 **3.8.1 Cancel-Document Request**

909 The following groups of attributes are part of the Cancel-Document Request:

910 **Group 1: Operation Attributes**

911 **Natural Language and Character Set:**

912 The "attributes-charset" and "attributes-natural-language" attributes as described in [RFC2911] section  
 913 3.1.4.1.

914 **Target:**  
 915 The "document-number" (integer(1:MAX)) MUST be supplied along with either (1) the "printer-uri" (uri) plus  
 916 "job-id" (integer(1:MAX)) or (2) the "job-uri" (uri) operation attribute(s) which define the target Document  
 917 object for this operation as described in section [RFC2911] 3.1.5.

918 **Requesting User Name:**  
 919 The "requesting-user-name" (name(MAX)) attribute SHOULD be supplied by the client as described in  
 920 [RFC2911] section 8.3.

921 **"message" (text(127)):**  
 922 The client OPTIONALLY supplies this attribute. The Printer object OPTIONALLY supports this attribute. It is  
 923 a message to the operator. This "message" attribute is not the same as the "job-message-from-operator"  
 924 attribute. The "job-message-from-operator" attribute is used to report a message from the operator to the  
 925 end user that queries that attribute. This "message" operation attribute is used to send a message from the  
 926 client to the operator along with the operation request. It is an implementation decision of how or where to  
 927 display this message to the operator (if at all). **ISSUE 06: OK to have the "message" operation attribute**  
 928 **supplied in the Cancel-Document operation be sent to the operator in some unspecified way, like Cancel-**  
 929 **Job, which could include setting the Job's "message-to-operator" Job Template Job attribute or should we**  
 930 **just do away with the "message" operation attribute in the Cancel-Document operation?**

### 931 3.8.2 Cancel-Document Response

932 The following sets of attributes are part of the Cancel-Document Response:

#### 933 Group 1: Operation Attributes

934 **Status Message:**  
 935 In addition to the REQUIRED status code returned in every response, the response OPTIONALLY includes a  
 936 "status-message" (text(255)) and/or a "detailed-status-message" (text(MAX)) operation attribute as described  
 937 in [RFC2911] sections 13 and 3.1.6.

938 **Natural Language and Character Set:**  
 939 The "attributes-charset" and "attributes-natural-language" attributes as described in [RFC2911] section  
 940 3.1.4.2.

#### 941 Group 2: Unsupported Attributes

942 See [RFC2911] section 3.1.7 for details on returning Unsupported Attributes.

943 Once a successful response has been sent, the implementation guarantees that the Document will eventually end up  
 944 in the 'canceled' state. Between the time of the Cancel-Document operation is accepted and when the document  
 945 enters the 'canceled' document-state (see section 8.3), the "document-state-reasons" attribute SHOULD contain the  
 946 'processing-to-stop-point' value which indicates to later queries that although the Document might still be  
 947 'processing', it will eventually end up in the 'canceled' state, not the 'completed' state.

### 948 3.9 Cancel-Current-Document Operation<sup>6</sup>

949 This OPTIONAL operation allows a client to cancel either (1) any current Document of the current Job on the target  
 950 Printer or (2) the specified document in a specified job if they are the current document and job on the Printer. One  
 951 of the uses of this operation is by operators in an emergency, where the job-id and document-number might be

<sup>6</sup> In some modeling regimes, the Cancel-Current-Document operation might be a Device method, rather than a Job or Document method.

952 unknown to the operator. See section 3.8 for the semantics of canceling a Document and what values the Printer  
 953 sets the Document's Document Description attributes. Since a Document might already be marking by the time a  
 954 Cancel-Current-Document is received, some media sheet pages might be printed before the document is actually  
 955 terminated.

956 If the client does not supply a "job-id" and "document-number" operation attributes, the Printer MUST accept the  
 957 request and cancel the current document if there is a current document in the 'processing' state; otherwise, it MUST  
 958 reject the request and return the 'client-error-not-possible' status code. If more than one document is in the  
 959 'processing' or 'processing-stopped' states, the one that is marking is canceled and the others are unaffected.

960 Warning: On a shared printer, there is a race condition. Between the time that a user issues this operation and its  
 961 acceptance, the current document might change to a different document or even a different job. If the user or  
 962 operator is authenticated to cancel the new job, the wrong document is canceled. To prevent this race from  
 963 canceling the wrong document, the client MAY supply the "job-id" and "document-number" operation attributes which  
 964 is checked against the current job's "job-id" and the current Document's "document-number". If the job identified by  
 965 the "job-id" attribute is not the current job on the Printer and the "document-number" is not the current Document in  
 966 that current Job, i.e., is not in the 'processing' state, the Printer MUST reject this operation and return the 'client-  
 967 error-not-possible' status code. Otherwise, the Printer cancels the specified document.

968 *Access Rights:* The authenticated user (see [RFC2911] section 8.3) performing this operation must either be the job  
 969 owner (as determined in the Job Creation operation) or an operator or administrator of the Printer object (see  
 970 [RFC2911] Sections 1 and 8.5).

971 The Cancel-Current-Document Request and Cancel-Current-Document Response have the same attribute groups  
 972 and attributes as the Pause-Printer operation (see [RFC2911] section 3.2.8) with the addition of the following Group  
 973 1 Operation attributes in the request:

974 **"job-id" (integer(1:MAX)):**

975 The client OPTIONALLY supplies this Operation attribute in order to verify that the identified job is still the  
 976 current job on the target Printer object. The IPP object MUST supports this operation attribute, if it supports  
 977 this operation.

978 **"document-number (integer(1:MAX))**

979 The client OPTIONALLY supplies this Operation attribute in order to verify that the identified document is still  
 980 the current document on the target Printer object. The IPP object MUST supports this operation attribute, if it  
 981 supports this operation.

982 The Printer MUST ignore the new "job-message-from-operator" operation attribute (see [adm-ops] section 6), since  
 983 that is a job only attribute and Cancel-Current-Document is a Document operation. **ISSUE 07: OK not to have a**  
 984 **"document-message-from-operator" for use with Document operations, like with the Cancel-Current-Document**  
 985 **operation that an operator is likely to use?**

### 986 3.10 Delete-Document Operation

987 This OPTIONAL operation removes the specified Document object and its data immediately from the specified Job.  
 988 The Printer MUST reject the request if the Document is in any state, but 'pending' (there is no 'pending-held' state for  
 989 Documents). The Printer does not reassign the "document-number" Document Description attribute values of the  
 990 remaining Document objects in the Job, so that the deleted Document object leaves a gap in the document  
 991 numbering space for the Job. The Printer MUST return a 'client-error-not-found' status code, in a subsequent Get-  
 992 Document-Attributes operation for this Document object specifying its former "document-number". This operation is  
 993 similar to the Purge-Jobs operation which immediately deletes all jobs from the Printer. However, the Delete-  
 994 Document operation only deletes a single Document from the specified Job.

995 *Access Rights:* The authenticated user (see [RFC2911] section 8.3) performing this operation MUST be an operator  
996 or administrator of the Printer object (see [RFC2911] sections 1 and 8.5). Otherwise, the Printer MUST reject the  
997 operation and return: 'client-error-forbidden', 'client-error-not-authenticated', or 'client-error-not-authorized' as  
998 appropriate. This operation requires operator/administrator privileges, otherwise a rogue client could submit, then  
999 delete, at will using up valuable spooling space. Unprivileged users use Cancel-Document which goes through the  
1000 normal accounting, if any.

1001 The Delete-Document request and Delete-Document response have the same attribute groups and attributes as the  
1002 Cancel-Document operation (see section 3.8).

### 1003 3.11 Validate-Document Operation

1004 This REQUIRED operation allows the client to verify capabilities of a Printer against whatever attributes the client  
1005 supplies in the Validate-Document request in combination with the previously submitted partial Job, if any. This  
1006 operation is the same as the Create-Document operation (section 3.1) except the Printer does not create a new  
1007 Document object. The Printer performs the same validation for the Validate-Document operation as for the Create-  
1008 Document operation (section 3.1), with the addition that the client MAY supply the “document-uri” operation attribute  
1009 (defined in the Send-URI operation in [RFC2911] section 3.3.2). If the client supplies the “document-uri” operation  
1010 attribute, the Printer MUST validate that the URI scheme is supported and that the referenced data is accessible<sup>7</sup>.

1011 The client MAY supply a Job object Target, that is, either (1) a “printer-uri” and a “job-id” operation attribute or (2) a  
1012 “job-uri” operation attribute. If supplied, the Job Target MUST identify a job that has been created by Create-Job  
1013 ([RFC2911] section 3.2.4), but not yet closed, that is, the client hasn't yet supplied the “last-document” operation  
1014 attribute with a ‘true’ value. When the client supplies the Job object Target, the Printer MUST validate that an  
1015 identical Create-Document, Send-Document, or Send-URI operation would have been accepted in the context of the  
1016 specified Job and its other Document objects. If the client omits the Job Target by including only the “printer-uri”  
1017 operation attribute, the Printer performs the same validation as for a Create-Document in which there were no Job  
1018 attributes supplied in the Create-Job and no other Documents. The Printer MUST support the Validate-Document  
1019 operation with or without the Job object Target being present.

1020 If the client discovers that a Validate-Document operation fails, it has the choice of (1) canceling the entire partially  
1021 created job, if any, (2) closing the partially created Job as is (with a Send-Document supplying the “last-document”  
1022 with a ‘true’ value) so that the Printer will process the Job, or (3) adding other Document objects (with Create-  
1023 Document, Send-Document, and/or Send-URI) and then closing the Job.

1024 By using the Validate-Document operation a client can validate that an identical Create-Document operation (or a  
1025 Send-Document operation with the document data or a Send-URI operation) would be accepted by the Printer in the  
1026 context of the partially submitted Job. The Validate-Document operation also performs the same security negotiation  
1027 as the Create-Document operation (see [RFC2911] section 8), so that a client can check that the client and Printer  
1028 object security requirements can be met before performing a Create-Document, Send-Document, or Send-URI  
1029 operation.

1030 The Printer object returns the same status codes, Operation Attributes (Group 1) and Unsupported Attributes (Group  
1031 2) as the Create-Document operation (see section 3.1.2). However, no Document Object Attributes (Group 3) are  
1032 returned, since no Document object is created.

---

<sup>7</sup> The PWG PSI [pwg-psi] specification includes a Validate-Document operation with the “document-uri” operation attribute that the Printer MUST validate.

## 1033 4 Semantic extensions to Job operations

1034 This section defines effects that Job operations have on the Document object. Printer and Subscription object (Event  
 1035 Notification [ntfy]) operations MUST have no effect on the Document object and the Document object has no effect  
 1036 on the semantics of the Printer and Subscription operations. The Job operations that MUST NOT have any effect on  
 1037 the Document object because they are defined to affect the Job object as a whole are: **Get-Job-Attributes**<sup>8</sup>  
 1038 ([RFC2911] section 3.3.4), **Get-Jobs**<sup>9</sup> ([RFC2911] section 3.2.6), **Hold-Job** ([RFC2911] section 3.3.5), **Promote-Job**  
 1039 ([adm-ops] section 4.4.1), **Release-Held-New-Jobs** ([adm-ops] section 3.3.2), **Resume-Job** ([adm-ops] section  
 1040 4.3.2), **Schedule-Job-After** ([adm-ops] section 4.4.2), **Set-Job-Attributes** ([set-ops] section 4.2), and **Validate-Job**  
 1041 ([RFC2911] section 3.2.3).

1042 The Job operations that affect Document objects or that Document objects affect the semantics of the Job operations  
 1043 are, in alphabetical order:

### 1044 4.1 Cancel-Current-Job ([adm-ops] section 4.2)

1045 The Printer sets the “document-state” Document Description attribute to ‘canceled’ and the “document-state-reasons”  
 1046 Document Description attribute to ‘canceled-by-xxx’ for any documents in the current Job that have not yet reached a  
 1047 terminal state (‘completed’, ‘canceled’, or ‘aborted’), where “xxx” is ‘user’ or ‘operator’. See [adm-ops] section 4.2.

### 1048 4.2 Cancel-Job ([RFC2911] section 3.3.3)

1049 The Printer sets “document-state” Document Description attribute to ‘canceled’ and the “document-state-reasons”  
 1050 Document Description attribute to ‘canceled-by-user’ or ‘canceled-by-operator’ for *all* Document objects in the  
 1051 identified Job that have not yet reached a terminal state (‘completed’, ‘canceled’, or ‘aborted’).

### 1052 4.3 Create-Job ([RFC2911] section 3.2.4)

1053 The Printer creates the Job object with all of the mixture of Job and Document attributes supplied in the Create-Job  
 1054 operation. The Document objects that are subsequently created for the specified Job inherit the Document attributes  
 1055 from the Job object. However, the Printer MUST NOT copy down any Job Level attributes, including “document-  
 1056 overrides” ([override]) to the Document object as observable by a client in any Get-Documents or Get-Documents-  
 1057 Attributes operation responses.

### 1058 4.4 Print-Job ([RFC2911] section 3.2.1)

1059 The Printer creates one Document object as a side effect of the Print-Job operation. All of the attributes supplied by  
 1060 the client MUST remain at the Job Level as part of the Job object. Any Document attributes supplied have effect on  
 1061 the Document object because the Document object inherits them from the Job object. The Printer MUST populate  
 1062 the single Document object’s “document-state”, “document-state-reasons”, and “document-number” Document  
 1063 Description attributes with appropriate values. Thus a Get-Documents or Get-Documents-Attributes for a Job created  
 1064 by Print-Job will return no attributes supplied by the client, but will return the populated Document Description  
 1065 attributes.

<sup>8</sup> The Printer MUST NOT copy up to the Job object any Document attributes supplied at the Document Level in Create-Documents, Send-Documents, or Send-URI to the Job object as observable by the client in any Get-Job-Attributes operation responses.

<sup>9</sup> The Printer MUST NOT copy up to the Job object any Document attributes supplied at the Document Level in Create-Documents, Send-Documents, or Send-URI to the Job object as observable by the client in any Get-Job-Attributes operation responses.

#### 1066 **4.5 Print-URI** ([RFC2911] section 3.2.2)

1067 The Printer creates one Document object as a side effect of the Print-URI operation. All of the attributes supplied by  
1068 the client MUST remain at the Job Level as part of the Job object. Any Document attributes supplied have affect on  
1069 the Document object because the Document object inherits them from the Job object. The Printer MUST populate  
1070 the Document object's "document-state", "document-state-reasons", and "document-number" Document Description  
1071 attributes with appropriate values. Thus a Get-Documents or Get-Documents-Attributes for a Job created by Print-Job  
1072 will return no attributes supplied by the client, but will return the populated Document Description attributes.

#### 1073 **4.6 Purge-Jobs** ([RFC2911] section 3.2.9)

1074 The Printer removes all Job and all of their contained Document objects.

#### 1075 **4.7 Release-Job** ([RFC2911] section 3.3.6)

1076 The Printer moves the job to the 'pending' state, if there are no other "job-state-reasons" to hold the job. **ISSUE 08:**  
1077 **Should a Document's "document-state-reasons" keep a Job from being released with Release-Job? Or should there**  
1078 **be no such reasons for the "document-state-reasons" Document Description attribute? For example, what about the**  
1079 **'resources-are-not-ready' value of the "document-state-reasons" Document Description attribute? Or maybe the**  
1080 **'resources-are-not-ready' is only for the "job-state-reasons" Job Description attribute. Then there wouldn't be any**  
1081 **"document-state-reasons" that affect job scheduling.**

#### 1082 **4.8 Reprocess-Job** ([adm-ops] section 4.1)

1083 The Printer processes the Job again by processing *all* Documents in the Job, including ones that have been  
1084 canceled by a previous Cancel-Documents operation. Therefore, the Printer removes any 'canceled-by-xxx' values  
1085 from any of the "document-state-reasons" attributes and the Job's "job-state-reasons" attributes.

#### 1086 **4.9 Restart-Job** ([RFC2911] section 3.3.7)

1087 The Printer starts the Job over again by processing *all* Documents in the Job, including ones that have been  
1088 canceled by a previous Cancel-Documents operation. Therefore, the Printer removes any 'canceled-by-xxx' values  
1089 from any of the "document-state-reasons" attributes and the Job's "job-state-reasons" attributes and

#### 1090 **4.10 Send-Document** ([RFC2911] section 3.3.1)

1091 The Printer accepts a new Document Attributes group that the client can supply Document Template attribute and  
1092 creates a Document object (see section 3.3).

#### 1093 **4.11 Send-URI** ([RFC2911] section 3.3.2)

1094 The Printer accepts a new Document Attributes group that the client can supply Document Template attribute and  
1095 creates a Document object (see section 3.4).

#### 1096 **4.12 Suspend-Current-Job** ([adm-ops] section 4.3.1)

1097 The Printer suspends the current job and sets the Job's "job-state" Job Description attribute to 'processing-stopped'  
1098 and "job-state-reasons" to 'job-suspended-by-xxx', where 'xxx' is 'user' or 'operator'. The Documents' "document-

1099 state” and “document-state-reasons” Document Description attributes are unaffected (but the Documents are not  
1100 processed any further, since the Job is stopped).

## 1101 5 Attribute Precedence

1102 This section defines the Attribute Precedence rules for Queue Override attributes, Page Override attributes,  
1103 Document Object attributes, Document Override attributes, Job Object attributes, PDL instructions, PDL Interpreter  
1104 initialization files, and Printer object defaults. Since each attribute can be specified for all of these levels, it is  
1105 important to define which level takes precedence when the same attribute occurs at different levels with differing  
1106 values.

1107 The attribute precedence model has the following features:

- 1108 1) In principle, each defined attribute can occur at each of the precedence levels.
- 1109 2) Attributes can be introduced and modified at different points in the job workflow, e.g., in the application, print  
1110 driver, submission client, protocol, and Printer:
  - 1111 • Attributes are supplied by different agents in the system: application, user, print driver, administrator,  
1112 operator, Printer object, and the output device hardware.
  - 1113 • Attributes are supplied at different points in time: PDL generation, job submission, job acceptance, job  
1114 pending, job processing.
- 1115 3) Attributes can be introduced and modified at different points in the job workflow, e.g., in the application, print  
1116 driver, submission client, protocol, and Printer.
- 1117 4) The later that an attribute is introduced into the work flow or the closer the attribute is to the affected object,  
1118 the higher the precedence is assigned to that attribute, since precedence is intended to reflect the user’s  
1119 wishes.

1120 The following levels of Attribute Precedence are defined in order of decreasing priority:

- 1121 1. **queue override** - The value that the Printer enforces for any job submitted to it (see [prod-print2] section  
1122 3.1). Set by the administrator when configuring the Printer by setting an "xxx-supported" Printer attribute  
1123 to contain a single value, i.e., the override value. Example: the administrator sets the Printer's "sides" =  
1124 'two-sided-long' so that all jobs submitted to that (logical) Printer are printed two-sided flipped along the  
1125 long edge.

1126 Note: The **queue override** level is only available for Printers that support the 'guaranteed' value for  
1127 its "pdl-override-supported" attribute (see [prod-print2] section 8). All other levels are available for all  
1128 Printers independent of the "pdl-override-supported" value.

- 1129 2. **Document Level - page override programming** - The special “page-overrides” collection Document  
1130 Template attribute (see [override]) supplied at the Document Level, i.e., in a Create-Document, Send-  
1131 Document, or Send-URI operation, that contains the attributes that are to have the page override status  
1132 for the specified ranges of pages in the Input-Document or the Output-Document. Supplied by the client  
1133 when submitting a Document object, or set by the user or operator after the Document has been  
1134 accepted either using the Set-Document-Attributes operation, or by the operator using means local to the  
1135 Printer. Example: "page-overrides" = {"page-number" = '1'; "media" = 'letterhead'}



- 1136           **3. Document Level - Document object attributes** - The Document attributes supplied at the Document  
 1137 Level, i.e., in a Create-Documents, Send-Document, or Send-URI operation to apply to the Input  
 1138 Document. Supplied by the client when submitting a Document object, or set by the user or operator  
 1139 after the Document has been accepted either using the Set-Job-Attributes operation, or by the operator  
 1140 using means local to the Printer. Examples: "media" = 'na-letter' and "copies" = '2'.
- 1141           **4. Job Level - page override programming** - A special "page-overrides" collection Job Template attribute  
 1142 (see [override]) supplied at the Job Level, i.e., in a Job Creation operation, that contains the attributes  
 1143 that are to have the page override status for the specified ranges of pages in the Input-Documents or the  
 1144 Output-Documents. Supplied by the client when submitting a job either in the protocol, or set by the user  
 1145 or operator after the job has been accepted either using the Set-Job-Attributes operation, or by the  
 1146 operator using means local to the Printer. Example: "page-overrides" = {"page-number" = '1'; "media" =  
 1147 'letterhead'}
- 1148           **5. Job Level - document override programming** - A special "document-overrides" collection Job  
 1149 Template attribute (see [override]) that contains the attributes that are to have the document override  
 1150 status for the specified Input-Documents or Output-Documents. Supplied by the client when submitting a  
 1151 job either in the protocol, or set by the user or operator after the job has been accepted either using the  
 1152 Set-Job-Attributes operation, or by the operator using means local to the Printer. Example: "document-  
 1153 overrides" = {"document-number" = '5'; "media" = 'transparency'}
- 1154           **6. Job Level - Job object attributes** - The Job attributes supplied at the Job Level, i.e., with a Create-Job,  
 1155 Print-Job, or Print-URI operation. Supplied by the client when submitting a Job in the protocol, or set by  
 1156 the user or operator after the job has been accepted either using the Set-Job-Attributes operation, or by  
 1157 the operator using means local to the Printer. Examples: "media" = 'na-letter' and "copies" = '2'.
- 1158           **7. PDL document data** - an instruction in the PDL document data. Supplied by the application or print  
 1159 driver that created the PDL. Example: PostScript setPageDevice specifying na-letter media.
- 1160           **8. PDL Init File data** - a file that the Printer uses to initialize the PDL Interpreter before it starts interpreting  
 1161 each document in a Job. See description of "pdl-init-file" Job Template attribute in [prod-print2] Section  
 1162 5.8. It is immaterial how this file is specified, whether it be by a queue override, job object attribute or  
 1163 printer default – the precedence of the contents of this file is at this level.
- 1164           **9. printer default** - a Printer "xxx-default" attribute that is applied by the Printer provided that none of the  
 1165 higher levels have supplied a value. The Printer implementation MUST supply values for all of the  
 1166 Printer's "xxx-default" attributes that reflect the out-of-the-box action by the output device. For example,  
 1167 if the output device will use media from the large-capacity input tray if not directed otherwise, the  
 1168 implementation MUST supply the Printer's "media-default" attribute with the 'large-capacity' keyword  
 1169 value without requiring the administrator to configure that value. The implementation MUST allow the  
 1170 administrator to configure the Printer's "xxx-default" attributes to other values, if other value are  
 1171 supported by the implementation. Example: The administrator changes the Printer's "media-default"  
 1172 from 'large-capacity' to 'na-letter'.
- 1173           Note: Because of the requirement that the implementation supply pre-configured values for the  
 1174 Printer's "xxx-default" attributes, there is no need for a lower "hardware default" precedence  
 1175 level.

## 1176   **6 Operation Attributes for the Job and Document Creation operations**

1177   This section lists *all* the Operation attributes that have been defined in other IPP specifications that are used in Job  
 1178   Creation operations and extends their use to the Document Creation operations defined in the IPP specification.  
 1179   Operation attributes relate to the operation and do not depend on the printing capabilities of the Printer.

## 1180 6.1 Operation Attributes supplied at the Job and Document Levels

1181 Table 4 lists the Operation attributes that clients supply at the Job Level and/or the Document Level. The value of  
 1182 the “ipp-attribute-fidelity” operation attribute does *not* affect the Printer’s handling of the other operation attributes,  
 1183 only its handling of the Job Template attributes (see section 7).

1184 The “Level Supplied” column indicates whether the Operation attribute can be supplied at the Job Level (Print-Job,  
 1185 Print-URI, and Create-Job) and at the Document Level (Create-Document, Send-Document, and Send-URI) . The  
 1186 Conformance column indicates the conformance requirements for what the client supplies in a request and the  
 1187 Printer supports in a request. The Reference and Section columns list the IETF or IEEE-ISTO specification which  
 1188 defines the semantics of the attribute

1189 **Table 4 - Operation Attributes supplied at the Job and Document Levels**

Operation attribute name for Job and Document Creation <i>requests</i>	Attribute Syntax	Level Supplied		Conformance		Reference
		Job	Doc	Client supply	Printer support	
<b>attributes-charset *</b>	charset	y	y	MUST	MUST	[RFC2911] §3.1.4
<b>attributes-natural-language *</b>	naturalLanguage	y	y	MUST	MUST	[RFC2911] §3.1.4
<b>compression</b>	type3 keyword	y <sup>10</sup>	y	MAY	MUST	[RFC2911] §3.2.1.1
<b>document-format</b>	mimeMediaType	y <sup>3</sup>	y	MAY	MUST	[RFC2911] §3.2.1.1
<b>document-name</b>	name(MAX)	y <sup>3</sup>	y	MAY	MUST	[RFC2911] §3.2.1.1
<b>document-natural-language</b>	naturalLanguage	y <sup>3</sup>	y	MAY	MAY	[RFC2911] §3.2.1.1
<b>document-overrides</b>	1setOf collection		y <sup>11</sup>	MAY	MAY	[override] §5.1
<b>document-uri</b>	uri	y	y	MAY <sup>12</sup>	MAY	[RFC2911] §3.2.2
<b>input-document-number<sup>13</sup></b>	integer(1:MAX)	-	y	MAY	MAY	[override] §9.2
<b>ipp-attribute-fidelity</b>	boolean	y	y	MAY	MUST	[RFC2911] §3.2.1.1
<b>job-impressions</b>	integer(0:MAX)	y	y	MAY	MAY	[RFC2911] §3.2.1.1
<b>job-k-octets</b>	integer(0:MAX)	y	y	MAY	MAY	[RFC2911] §3.2.1.1
<b>job-media-sheets</b>	integer(0:MAX)	y	y	MAY	MAY	[RFC2911] §3.2.1.1
<b>job-name</b>	name(MAX)	y	-	MAY	MUST	[RFC2911] §4.3.5

<sup>10</sup> The “compression”, “document-format”, “document-name”, and “document-natural-language” MAY be supplied in the Create-Job Job Creation operation as an extension to [RFC2911] as specified in [override]. If supplied in any Job Creation operation, the Printer copies them to corresponding Job Description attributes for subsequent Job query. These supplied attributes become defaults for the Documents in the job and used if the client does not supply the corresponding operation attribute in the Send-Document or Send-URI Document Creation operation.

<sup>11</sup> The “document-overrides” (collection) attribute MAY be supplied by the client in a Send-Document or Send-URI request as an Operation attribute to apply document overrides to this and/or subsequent documents in the job. See the “page-overrides” Job Template attribute in Table 6 for the listing of the member attributes. However, with the introduction of the Document object, the “document-overrides” (collection) attribute SHOULD NOT be used (either as a Job Template attribute or an Operation attribute). Instead, the client simply supplies the Document Template attributes (see Table 6) for each Document Creation request (in a new Document Template attribute group) without needing a collection.

<sup>12</sup> The “document-uri” operation attribute MUST be supplied in the Job Creation operation and MUST NOT be supplied in other Job Creation operations.

<sup>13</sup> The “input-document-number” operation attribute sets the Document’s “document-number” Document Description attribute (see section 8.1).

Operation attribute name for Job and Document Creation <i>requests</i>	Attribute Syntax	Level Supplied		Conformance		Reference
		Job	Doc	Client supply	Printer support	
<b>job-password</b>	octetString(255)	y	-	MAY	MAY	[prod-print2] §4.1
<b>job-password-encryption</b>	type3 keyword   name(MAX)	y	-	MAY	MAY	[prod-print2] §4.2
<b>last-document</b>	boolean	-	y	MUST	MUST	[RFC2911] §3.3.1.1
<b>job-mandatory-attributes</b>	1setOf type2 keyword	y	y	MAY	MAY	[this spec] §6.2.1
<b>operation-id *</b>	integer(1:0x8FFF)	y	y	MUST	MUST	[RFC2911] §3.1.2
<b>original-requesting-user-name</b>	name(MAX)	y	y	MAY	MAY	[adm-ops] §11.7.2.2
<b>page-overrides</b>	1setOf collection	-	y <sup>14</sup>	MAY	MAY	[override] §
<b>printer-uri *</b>	uri	y	y	MUST	MUST	[RFC2911] §3.1.5
<b>request-id *</b>	integer(1:MAX)	y	y	MUST	MUST	[RFC2911] §3.1.2
<b>requesting-user-name *</b>	name(MAX)	y	y	SHOULD	MUST	[RFC2911] §3.2.1.1
<b>version-number *</b>	X.Y	y	y	MUST	MUST	[RFC2911] §3.1.8

1190 \* - indicates attributes that are defined for *all* operations, not just Job Creation and Document Creation operations

1191 **6.2 Operation Attributes defined for use with the Document Object**

1192 This section defines new Operation attributes defined for use with the Document object.

1193 **6.2.1 job-mandatory-attributes (1setOf type2 keyword)**

1194 This operation attribute identifies which Job Template and Document Template attributes the Printer MUST honor, otherwise, the Printer MUST reject the Job Creation for the Job or any subsequent Document Creation operations for this Job. The Printer MUST ignore this attribute if the “ipp-attribute-fidelity” operation attribute is supplied with a ‘true’ value, since that indicates that the Printer MUST honor all supplied Job and Document Template attributes.

1198 The values of the “job-mandatory-attributes” attribute are the keywords that identify attributes, for example, ‘copies’ and ‘media’. In order to identify a member attribute of a collection attribute, the keyword names of both the collection attribute and the member attribute are given separated by a period (.) character. For example, to make the “media” attribute of the “cover-front” collection attribute, supply the keyword value: ‘cover-front.media’.

1202 **ISSUE 09:** Shouldn’t we have both a “job-mandatory-attributes” and a “document-management-attributes” operation attribute, one for use in Job Creation operations and the other for use in Document Creation operations?

1204 **6.3 Operation Attributes returned in Job and Document Creation responses**

1205 Table 5 lists the Operation attributes that Printers return in Job Creation operation *responses*: Print-Job, Print-URI, and Create-Job and in Document Creation operation *responses*: Send-Document and Send-URI. The column labeled “Conformance” indicates the conformance for what the Printer returns and what the Printer supports. The Reference and Section columns list the IETF or IEEE-ISTO specification which defines the semantics of the attribute.

1209

<sup>14</sup> The “page-overrides” (collection) attribute MAY be supplied by the client in a Send-Document or Send-URI request as an Operation attribute to apply page overrides to this and/or subsequent documents in the job. See the “page-overrides” Job Template attribute in Table 6 for the listing of the member attributes. However, with the introduction of the Document object, the “page-overrides” (collection) attribute SHOULD be more simply supplied as one of the Document Template attributes for this document only.

1210

**Table 5 - Operation attributes returned in Job and Document Creation operation responses**

Operation attribute name	Attribute Syntax Values	Conformance		References
		Printer return	Printer support	
<b>attributes-charset *</b>	charset	MUST	MUST	[RFC2911] §3.1.4
	'utf-8'	MAY	MUST	[RFC2911] §4.1.7
	'us-ascii'	MAY	MAY	[RFC2911] §4.1.7
	'iso-8859-1'	MAY	MAY	[RFC2911] §4.1.7
	'iso-10646-ucs-2'	MAY	MAY	[RFC2911] §4.1.7
<b>attributes-natural-language *</b>	naturalLanguage	MUST	MUST	[RFC2911] §3.1.4
	'en-US'	MAY	MAY	[RFC2911] §4.1.8
<b>detailed-status-message *</b>	text	MAY	MAY	[RFC2911] §3.1.6.3
<b>document-access-error</b>	text	MAY	MAY	[RFC2911] §3.1.6.4
<b>document-id-uri</b>	uri	<b>MUST? ISSUE 10</b>	<b>MUST? ISSUE 11</b>	[this spec] §8.8
<b>job-id</b>	integer(1:MAX)	MUST	MUST	[RFC2911] §4.3.2
<b>job-uri</b>	uri	MUST	MUST	[RFC2911] §4.3.1
<b>redirect-uri (uri)<sup>15</sup></b>	uri	MAY	MAY	[not-srv] §5.2
<b>request-id *</b>	integer(1:32767)	MUST	MUST	[RFC2911] §3.1.2
<b>status-code *</b>	integer(0:32767)	MUST	MUST	[RFC2911] §3.1.6.1
<b>status-message *</b>	text(255)	MAY	MAY	[RFC2911] §3.1.6.2
<b>version-number *</b>	integer(1:255), integer(0:255)	MUST	MUST	[RFC2911] §3.1.8

1211

\* - indicates attributes that are defined for *all* operations, not just Job Creation operations

1212

1213

## 7 Job Template and Document Template attributes

1214

Table 6 lists *all* of the Job Template attributes defined in other IPP specifications and lists their corresponding Document Template attributes defined in this IPP specification. The Job Template attributes can be supplied in the Job Creation operations: Print-Job, Print-URI, and Create-Job operations.

1215

1216

1217

A subset of these Job Template attributes (e.g., “document-format” and “media”, but not “job-priority”) are also defined to apply to Documents and are called Document Template attributes when supplied at the Document Level. Document Template attribute can be supplied in the Create-Document, Send-Document, and Send-URI operations.

1218

1219

1220

These Document Template attributes can also be supplied as Document Overrides using the “document-overrides” Job Template attribute (see [overrides]).

1221

1222

A subset of the Document Template attributes that apply to pages (e.g., “media”, but not “document-format” or “job-priority”) can also be supplied as Page Overrides using the “page-overrides” Job Template collection attribute (see [override]) or as a Document Template attribute.

1223

1224

1225

According to [override], the “document-overrides” (collection) attribute MAY be supplied by the client in a Send-Document or Send-URI request as an Operation attribute to apply document overrides to this and/or subsequent

1226

<sup>15</sup> The Printer or Notification Server returns the “redirect-uri” operation attribute in order to redirect the Get-Notification operation to a Notification Server or back to the original Printer.

1227 documents in the job. See the “document-overrides” Job Template attribute in Table 6 for the listing of the member  
 1228 attributes. However, with the introduction of the Document object, the “document-overrides” (collection) attribute  
 1229 SHOULD NOT be used (either as a Job Template attribute or an Operation attribute). Instead, the client simply  
 1230 supplies the Document Template attributes (see Table 6) for each Document Creation request (in a new Document  
 1231 Template attribute group) without needing a collection. A Printer MAY support “document-overrides” as specified in  
 1232 [override] for backward compatibility with clients that don’t support the Document object.

1233 The “document-overrides” attribute is also useful in combination with the “pages-per-subset” attribute (see  
 1234 [overrides]) which divides up the Input Page stream concatenated across the Input Documents into separate Output  
 1235 Documents. For example, making every 10 Input Pages be a separate Output Document but the client only wants to  
 1236 staple the first Output Document.

1237 Similarly, according to [override], the “page-overrides” (collection) attribute MAY be supplied by the client in a Send-  
 1238 Document or Send-URI request as an Operation attribute to apply page overrides to this and/or subsequent  
 1239 documents in the job. See the “page-overrides” Job Template attribute in Table 6 for the listing of the member  
 1240 attributes. However, with the introduction of the Document object, the “page-overrides” (collection) attribute  
 1241 SHOULD be more simply supplied as one of the Document Template attributes for the document being created only.  
 1242 However, a Printer MAY also support the “page-overrides” attribute as an operation attribute for backward  
 1243 compatibility with clients that do not support the Document object.

1244 The “Defined for use” column indicates whether the client MAY supply and the Printer support the attribute at the  
 1245 Job, Document, or Page Level with the following semantics:

Supplied	Description
J=y:	Job Level: The attributes MAY be supplied as Job Template attributes at the Job Level in a Job Creation request (Print-Job, Print-URI, Create-Job) in which case each Document inherits the Job Template attribute as a default which is used unless an attribute at the document level is also supplied. Note: The “multiple-document-handling” attribute controls whether extensive attributes, such as “finishing”, “copies”, affect the entire job as a whole (‘single-xxx’ values) or affect each document separately (‘separate-xxx’ values).
D=y:	Document Level: The attribute MAY be supplied at the Document Level as Document Template attributes in a Document Creation operation (Send-Document, Send-URI), in which case the supplied Document Templates override any Job Template attributes supplied at the Job Level and any “document-overrides” supplied at the Job or Document level.
P=y:	Page Level: The attribute MAY be supplied as a member of the (1) “page-ranges” Job Template attribute at the Job Level in a Job Creation operation or (2) “page-ranges” Document Template attribute at the Document Level to affect the specified range of pages.

1246 Job Template and Document Template attributes are OPTIONAL for a Printer to support and for a client to supply in  
 1247 a Job Creation or Document Creation request or a Document Overrides or Page Overrides. If a Printer supports a  
 1248 Job Template or Document Template attribute, then it MUST copy the supplied attribute to the Job or Document  
 1249 object, respectively so that a client MAY query the attributes in subsequent Get-Job-Attributes/Get-Jobs and Get-  
 1250 Document-Attributes/Get-Documents operations, respectively. The effect of Job Template Attributes supplied in Job  
 1251 Creation requests are inherited by the Document objects, unless the Document Creation operation supplies the  
 1252 attribute with a different value.  
 1253

1254 If a Job Template collection attribute is supported (see [coll]), then there are conformance requirements for which  
 1255 member attributes MUST be supported and which member attributes a client MUST supply as indicated in the  
 1256 Conformance column for each collection member attribute in Table 6.

1257

Table 6 - Job Template and Document Template attributes

Job Template / Document Template attribute name	Attribute Syntax	Defined for use			Conformance		Reference
		J	D	P	Client supply	Printer support	
<b>copies</b>	integer(1:MAX)	y <sup>16</sup>	y	n	MAY	MAY	[RFC2911] §4.2.5
<b>cover-back</b>	collection	y	y	n	MAY	MAY	[prod-print] §3.1
<b>cover-type</b>	type2 keyword				MUST	MUST	[prod-print] §3.1.2
<b>media</b>	type3 keyword   name(MAX)				MAY be neither or one of, but NOT both	MUST	[prod-print] §3.1.1
<b>media-col</b>	collection					MAY	[prod-print] §3.1.1
<b>cover-front</b>	collection	y	y	n	MAY	MAY	[prod-print] §3.1
<b>cover-type</b>	type2 keyword				MUST	MUST	[prod-print] §3.1.2
<b>media</b>	type3 keyword   name(MAX)				MAY be neither or one of, but NOT both	MUST	[prod-print] §3.1.1
<b>media-col</b>	collection					MAY	[prod-print] §3.1.1
<b>document-overrides</b>	collection	y	n	n	MAY	MAY	[override] §5.1
<b>input-documents</b>	1setOf rangeOfInteger(MAX)				MUST be one or the other, but NOT both	MUST	[override] §5.1.1
<b>output-documents</b>	1setOf rangeOfInteger(MAX)					MUST	[override] §5.1.2
<b>document-copies</b>	1setOf rangeOfInteger(MAX)				MAY	MAY	[override] §5.1.3
<b>document-format</b>	mimeMediaType				MAY	MUST	[override] §5.1.4
<b>document-name</b>	name (MAX)				MAY	MUST	[override] §5.1.5
<b>compression</b>	type3 keyword				MAY	MUST	[override] §5.1.6
<b>document-natural-language</b>	naturalLanguage				MAY	MAY	[override] §5.1.7
<b>page-ranges</b>	1setOf rangeOfInteger (1:MAX)				MAY	MAY	[override] §5.1.8
<i>any other Job Template attributes that affect documents, such as "media" or "media-col"</i>					MAY	MAY	
<b>feed-orientation</b>	type3 keyword	y	y	n	MAY	MAY	[prod-print2] §5.1
<b>finishings</b>	1setOf type2 enum	y <sup>17</sup>	y	y	MAY be neither or one of, but NOT both	MAY, MUST if "finishing-col" is supported	[RFC2911] §4.2.6 [finish] §2
<b>finishings-col</b>	collection	y <sup>9</sup>	y	y			MAY

<sup>16</sup> The IPP "copies" attribute is an *extensive* attribute, so its effect when supplied at the job level is not always inherited by the documents in a multi-document job. Instead, its effect depends on the value of the "multiple-document-handling" Job Template attribute. The 'single-document' and 'single-document-new-sheet' values produce copies of the job as a whole with the multiple input documents concatenated into a single output document for each job copy. The 'separate-document-uncollated-copies' value produce N copies of the first input document followed by N copies of the second input document, etc. The 'separate-document-collated-copies' produce N successive job copies, each job copy consisting of 1 copy of the first document followed by 1 copy of the second document, etc.

<sup>17</sup> The IPP "finishings" and "finishings-col" attributes are *extensive* attributes, so their effect when supplied at the job level is not always inherited by the documents in a multi-document job. Instead, their effect depends on the value of the "multiple-document-handling" Job Template attribute. The 'single-document' and 'single-document-new-sheet' cause the finishing to be applied to each job copy as a whole. The 'separate-documents-collated-copies' and 'separate-document-uncollated-copies' values cause the finishing to be applied to each document.

Job Template / Document Template attribute name	Attribute Syntax	Defined for use			Conformance		Reference
		J	D	P	Client supply	Printer support	
<b>finishing-template</b>	name(MAX)				MAY	MAY	[prod-print] §3.2.1
<b>stitching</b>	collection				MAY	MAY	[prod-print] §3.2.2
<b>stitching-reference-edge</b>	type2 keyword				MUST	MUST	[prod-print] §3.2.2.1
<b>stitching-offset</b>	integer (0:MAX)				MUST	MUST	[prod-print] §3.2.2.2
<b>stitching-locations</b>	1setOf integer(0:MAX)				MUST	MUST	[prod-print] §3.2.2.3
<b>font-name-requested</b>	name(MAX)	y	y	y	MAY	MAY	[prod-print2] §5.2
<b>font-size-requested</b>	integer (1:MAX)	y	y	y	MAY	MAY	[prod-print2] §5.3
<b>force-front-side</b>	1setOf integer(1:MAX)	y <sup>18</sup>	y	y	MAY	MAY	[prod-print] §3.3
<b>imposition-template</b>	type2 keyword   name(MAX)	y	y	y	MAY	MAY	[prod-print] §3.4
<b>insert-sheet</b>	1setOf collection	y <sup>10</sup>	y	y	MAY	MAY	[prod-print] §3.5
<b>insert-after-page-number</b>	integer(0:MAX)				MUST	MUST	[prod-print] §3.5.1
<b>insert-count</b>	integer(0:MAX)				MAY	MUST	[prod-print] §3.5.2
<b>media</b>	type3 keyword   name(MAX)				MUST be one or the other, but NOT both	MUST	[prod-print] §3.5.3
<b>media-col</b>	collection					MAY	[prod-print] §3.5.3
<b>job-account-id</b>	name(MAX)	y	n	n	MAY	MAY	[prod-print] §3.6
<b>job-accounting-sheets</b>	collection	y	n	n	MAY	MAY	[prod-print] §3.8
job-accounting-sheets-type	type3 keyword   name(MAX)				MUST	MUST	[prod-print] §3.8.1
media	type3 keyword   name(MAX)				MAY be neither or one of, but NOT both	MUST	[prod-print] §3.8.2
media-col	collection					MAY	[prod-print] §3.8.2
job-accounting-output-bin	type3 keyword   name(MAX)				MAY	MAY	[prod-print] §3.8.3
<b>job-accounting-user-id</b>	name(MAX)	y	n	n	MAY	MAY	[prod-print] §3.7
<b>job-copies</b>	integer(1:MAX)	y	n <sup>19</sup>	n	MAY	MAY	[this spec] §7.1.1
<b>job-cover-back</b>	collection	y	n <sup>20</sup>	n	MAY	MAY	[this spec] §7.1.2
<b>same as cover-back</b>	<b>see cover-back</b>						
<b>job-cover-front</b>	collection	y	n <sup>21</sup>	n	MAY	MAY	[this spec] §7.1.3
<b>same as cover-front</b>	<b>see cover-front</b>						
<b>job-error-sheet</b>	collection	y	n	n	MAY	MAY	[prod-print] §3.9

<sup>18</sup> The effect of the IPP “force-front-side” and “insert-sheet” attributes when supplied at the job level of a multi-document job depends on the value of the “multiple-document-handling” Job Template attribute. For the ‘single-document’ and ‘single-document-new-sheet’ values, the pages are numbered as a single set from 1 to n for the job as a whole. For the ‘separate-documents-collated-copies’ and ‘separate-document-uncollated-copies’ values, the pages are numbered from 1 to n for each document separately.

<sup>19</sup> The “job-copies” Job Template attribute MUST NOT be supplied at the Document or Page Level. The “job-copies” Job Template attribute was introduced for use in clients or Printers that don’t support “multiple-document-handling” = ‘single-document’ or ‘single-document-new-sheet’.

<sup>20</sup> The “job-cover-back” Job Template attribute MUST NOT be supplied at the Document or Page Level. The “job-cover-back” Job Template attribute was introduced for use in clients or Printers that don’t support “multiple-document-handling” = ‘single-document’ or ‘single-document-new-sheet’.

<sup>21</sup> The “job-cover-front” Job Template attribute MUST NOT be supplied at the Document or Page Level. The “job-cover-front” Job Template attribute was introduced for use with clients or Printers that don’t support “multiple-document-handling” = ‘single-document’ or ‘single-document-new-sheet’.

Job Template / Document Template attribute name	Attribute Syntax	Defined for use			Conformance		Reference
		J	D	P	Client supply	Printer support	
<b>job-error-sheet-type</b>	type3 keyword   name(MAX)				MUST	MUST	[prod-print] §3.9.1
<b>job-error-sheet-when</b>	type2 keyword				MAY	MAY	[prod-print] §3.9.2
<b>media</b>	type3 keyword   name(MAX)				MAY be neither or one of, but NOT both	MUST	[prod-print] §3.9.3
<b>media-col</b>	collection					MAY	[prod-print] §3.9.3
<b>job-finishings</b>	1setOf type2 enum	y	n <sup>22</sup>	n	MAY	MAY	[this spec] §7.1.4
<b>job-finishings-col</b>	collection	y	n <sup>23</sup>	n	MAY	MAY	[this spec] §7.1.5
<b>same as finishings-col</b>	<b>see finishings-col</b>						
<b>job-hold-until</b>	type3 keyword   name(MAX)	y	n	n	MAY	MAY	[RFC2911] §4.2.2
<b>job-hold-until-time</b>	dateTime	y	n	n	MAY	MAY	[prod-print2] §5.4
<b>job-message-to-operator</b>	text(MAX)	y	n	n	MAY	MAY	[prod-print] §3.10
<b>job-phone-number</b>	text(127)	y	n	n	MAY	MAY	[prod-print2] §5.5
<b>job-priority</b>	integer(1:100)	y	n	n	MAY	MAY	[RFC2911] §4.2.1
<b>job-recipient-name</b>	name(MAX)	y	n	n	MAY	MAY	[prod-print2] §5.6
<b>job-save-disposition</b>	collection	y	n	n	MAY	MAY	[prod-print2] §5.7
<b>save-disposition</b>	type3 keyword	y	n	n	MAY	MAY	[prod-print2] §5.7.1.1
<b>save-info</b>	1setOf collection	y	n	n	MAY	MAY	[prod-print2] §5.7.1.2
<b>save-location</b>	uri	y	n	n	MAY	MAY	[prod-print2] §5.7.1.2.3.1
<b>save-name</b>	name(MAX)	y	n	n	MAY	MAY	[prod-print2] §5.7.1.2.3.2
<b>save-document-format</b>	mimeMediaType	y	n	n	MAY	MAY	[prod-print2] §5.7.1.2.3.3
<b>job-sheet-message</b>	text(MAX)	y	n	n	MAY	MAY	[prod-print] §3.12
<b>job-sheets</b>	type3 keyword   name(MAX)	y	n	n	MAY be neither or one of, but NOT both	MAY, MUST if “job-sheets-col” supported	[RFC2911] §4.2.3
<b>job-sheets-col</b>	collection	y	n	n		MAY	[prod-print] §3.11
<b>job-sheets</b>	type3 keyword   name(MAX)				MUST	MUST	[prod-print] §3.11.1
<b>media</b>	type3 keyword   name(MAX)				MUST be one or the other, but NOT both	MUST	[prod-print] §3.11.2
<b>media-col</b>	collection					MAY	[prod-print] §3.11.2
<b>media</b>	type3 keyword   name(MAX)	y	y	y	MAY be neither or one of, but NOT both	MAY, MUST if “media-col” supported	[RFC2911] §4.2.11
<b>media-col</b>	collection	y	y	y		MAY	[prod-print] §3.13

<sup>22</sup> The “job-finishing” Job Template attribute MUST NOT be supplied at the Document or Page Level. The “job-finishings” Job Template attribute was introduced for use with clients or Printers that don’t support “multiple-document-handling” = ‘single-document’ or ‘single-document-new-sheet’.

<sup>23</sup> The “job-finishing-col” Job Template attribute MUST NOT be supplied at the Document or Page Level. The “job-finishings-col” Job Template attribute was introduced for use with clients or Printers that don’t support “multiple-document-handling” = ‘single-document’ or ‘single-document-new-sheet’.



Job Template / Document Template attribute name	Attribute Syntax	Defined for use			Conformance		Reference
		J	D	P	Client supply	Printer support	
<b>media-back-coating</b>	type3 keyword   name(MAX)				MAY	MAY	[prod-print] §3.13.10
<b>media-color</b>	type3 keyword   name(MAX)				MAY	MAY	[prod-print] §3.13.4
<b>media-front-coating</b>	type3 keyword   name(MAX)				MAY	MAY	[prod-print] §3.13.10
<b>media-grain</b>	type3 keyword   name(MAX)				MAY	MAY	[prod-print2] §8.4.2
<b>media-hole-count</b>	integer(0:MAX)				MAY	MAY	[prod-print] §3.13.6
<b>media-info</b>	text(255)				MAY	MAY	[prod-print] §3.13.3
<b>media-key</b>	type3 keyword   name(MAX)				MAY	MAY	[prod-print] §3.13.1
<b>media-material</b>	type3 keyword   name(MAX)				MAY	MAY	[prod-print2] §8.4.3
<b>media-order-count</b>	integer(1:MAX)				MAY	MAY	[prod-print] §3.13.7
<b>media-preprinted</b>	type3 keyword   name(MAX)				MAY	MAY	[prod-print] §3.13.5
<b>media-recycled</b>	type3 keyword   name(MAX)				MAY	MAY	[prod-print] §3.13.11
<b>media-size</b>	collection				MAY	MUST	[prod-print] §3.13.8
<b>x-dimension</b>	integer(0:MAX)				MUST	MUST	[prod-print] §3.13.8.1
<b>y-dimension</b>	integer(0:MAX)				MUST	MUST	[prod-print] §3.13.8.2
<b>media-tooth</b>	type3 keyword   name(MAX)				MAY	MAY	[prod-print2] §8.4.1
<b>media-thickness</b>	integer(1:MAX)				MAY	MAY	[prod-print2] §8.4.4
<b>media-type</b>	type3 keyword   name(MAX)				MAY	MAY	[prod-print] §3.13.2
<b>media-weight-metric</b>	integer(0:MAX)				MAY	MAY	[prod-print] §3.13.9
<b>media-input-tray-check</b>	type3 keyword   name(MAX)	y	y	y	MAY	MAY	[prod-print] §3.14
<b>multiple-document-handling</b>	type2 keyword	y	n	n	MAY	MUST if multiple document jobs supported	[RFC2911] §4.2.4
<b>number-up</b>	integer(1:MAX)	y	y	y	MAY	MAY	[RFC2911] §4.2.9
<b>orientation-requested</b>	type2 enum	y	y	y	MAY	MAY	[RFC2911] §4.2.10
<b>output-bin</b>	type2 keyword   name(MAX)	y	y	n	MAY	MAY	[output-bin] §2.1
<b>page-delivery</b>	type2 keyword	y	y	n	MAY	MAY	[prod-print] §3.15
<b>page-order-received</b>	type2 keyword	y	y	n	MAY	MAY	[prod-print] §3.16
<b>page-overrides</b>	1setOf collection	y <sup>24</sup>	y	n	MAY	MAY	[override] §5.2

<sup>24</sup> The effect of the IPP "page-overrides" Job Template attribute when supplied at the job level of a multi-document job depends on the value of the "multiple-document-handling" Job Template attribute. For the 'single-document' and 'single-document-new-sheet' values, the pages are numbered as a single set from 1 to n for the job as a whole. For the 'separate-documents-collated-copies' and 'separate-document-uncollated-copies' values, the pages are numbered from 1 to n for each document separately.

Job Template / Document Template attribute name	Attribute Syntax	Defined for use			Conformance		Reference
		J	D	P	Client supply	Printer support	
<b>input-documents</b>	1setOf rangeOfInteger(MAX)				MUST be one or the other, but NOT both	MUST	[override] §5.2.1
<b>output-documents</b>	1setOf rangeOfInteger(MAX)					MUST	[override] §5.2.2
<b>document-copies</b>	1setOf rangeOfInteger(MAX)				MAY	MAY	[override] §5.2.3
<b>pages</b>	1setOf rangeOfInteger(MAX)				MUST	MUST	[override] §5.2.4
<i>any other Job Template attributes that affect pages, such as "media" or "media-col"</i>					MAY	MAY	
<b>page-ranges</b>	1setOf rangeOfInteger(1:MAX)	y <sup>25</sup>	y	y	MAY	MAY	[RFC2911] §4.2.7
<b>pages-per-subset</b>	1setOf integer(1:MAX)	y <sup>26</sup>		n	MAY	MAY	[prod-print] §5.3
<b>pdl-init-file</b>	1setOf collection	y	y	n	MAY	MAY	[prod-print2] §5.8
<b>pdl-init-file-location</b>	uri				MAY	MAY	[prod-print2] §5.8.1.1
<b>pdl-init-file-name</b>	name(MAX)				MAY	MAY	[prod-print2] §5.8.1.2
<b>pdl-init-file-entry</b>	name(MAX)				MAY	MAY	[prod-print2] §5.8.1.3
<b>presentation-direction-number-up</b>	type2 keyword	y	y	y	MAY	MAY	[prod-print] §3.17
<b>print-quality</b>	type2 enum	y	y	y	MAY	MAY	[RFC2911] §4.2.13
<b>printer-resolution</b>	resolution	y	y	y	MAY	MAY	[RFC2911] §4.2.12
<b>proof-print</b>	collection	y	n	n	MAY	MAY	[prod-print2] §5.9
<b>proof-print-copies</b>	integer (0:MAX)	y	n	n	MAY	MAY	[prod-print2] §5.9.1.1
<b>media</b>	type3 keyword   name(MAX)				MAY be neither or one of, but NOT both	MUST	[prod-print2] §5.8.1.2
<b>media-col</b>	collection					MAY	[prod-print2] §5.8.1.2
<b>separator-sheets</b>	collection	y	y	y	MAY	MAY	[prod-print] §3.18
<b>separator-sheets-type</b>	type3 keyword   name(MAX)				MUST	MUST	[prod-print] §3.18.1
<b>media</b>	type3 keyword   name(MAX)				MAY be neither or one of, but NOT both	MUST	[prod-print] §3.18.2
<b>media-col</b>	collection					MAY	[prod-print] §3.18.2
<b>sheet-collate</b>	type2 keyword	y	y	n	MAY	MAY	[job-prog] §3.1
<b>sides</b>	type2 keyword	y	y	y	MAY	MAY	[RFC2911] §4.2.8
<b>x-image-position</b>	type2 keyword	y	y	y	MAY	MAY	[prod-print] §3.19.2
<b>x-image-shift</b>	integer(MIN:MAX)	y	y	y	MAY	MAY	[prod-print] §3.19.3
<b>x-side1-image-shift</b>	integer(MIN:MAX)	y	y	y	MAY	MAY	[prod-print] §3.19.4
<b>x-side2-image-shift</b>	integer(MIN:MAX)	y	y	y	MAY	MAY	[prod-print] §3.19.5
<b>y-image-position</b>	type2 keyword	y	y	y	MAY	MAY	[prod-print] §3.19.6
<b>y-image-shift</b>	integer(MIN:MAX)	y	y	y	MAY	MAY	[prod-print] §3.19.7

<sup>25</sup> The effect of the IPP "page-ranges" Job Template attribute when supplied at the job level of a multi-document job depends on the value of the "multiple-document-handling" Job Template attribute. For the 'single-document' and 'single-document-new-sheet' values, the pages are numbered as a single set from 1 to n for the job as a whole. For the 'separate-documents-collated-copies' and 'separate-document-uncollated-copies' values, the pages are numbered from 1 to n for each document separately.

<sup>26</sup> The IPP "pages-per-subset" Job Template attribute MUST be supplied at the Job Level and can only be used when the "multiple-document-handling" Job Template attribute is 'separate-documents-collated-copies' or 'separate-documents-uncollated-copies', since the purpose of the "pages-per-subset" attribute is to produce separate output documents for each subset. Otherwise, the Printer MUST ignore the "pages-per-subset" attribute.

Job Template / Document Template attribute name	Attribute Syntax	Defined for use			Conformance		Reference
		J	D	P	Client supply	Printer support	
<b>y-side1-image-shift</b>	integer(MIN:MAX)	y	y	y	MAY	MAY	[prod-print] §3.19.8
<b>y-side2-image-shift</b>	integer(MIN:MAX)	y	y	y	MAY	MAY	[prod-print] §3.19.9

1258

## 1259 7.1 Job Template attributes defined for use with the Document object

1260 This section defines additional Job Template attributes for use with the Document object.

### 1261 7.1.1 job-copies (integer(1:MAX)) Job Template attribute

1262 This attribute specifies the number of job copies, i.e., with all of the Document objects taken together. Its  
 1263 interpretation is independent of the value of the “multiple-document-handling” Job Template attribute. See the  
 1264 “copies” Job Template attribute defined in [RFC2911] section 4.2.5 which switches between job copies and  
 1265 document copies depending on the value of the “multiple-document-handling” Job Template attribute.

### 1266 7.1.2 job-cover-back (collection) Job Template attribute

1267 This attribute specifies the cover for the back of the job, i.e., with all of the Document objects taken together and is  
 1268 independent of the value of the “multiple-document-handling” Job Template attribute. The member attributes are the  
 1269 same as “cover-back” (see [prod-print] section 3.1). However, the “cover-back” Job Template attribute switches  
 1270 between a job back cover and a document back cover depending on the value of the “multiple-document-handling”  
 1271 Job Template attribute.

### 1272 7.1.3 job-cover-front (collection) Job Template attribute

1273 This attribute specifies the cover for the front of the job, i.e., with all of the Document objects taken together and is  
 1274 independent of the value of the “multiple-document-handling” Job Template attribute. The member attributes are the  
 1275 same as the “cover-front” Job Template attribute (see [prod-print] section 3.2). However, the “cover-front” Job  
 1276 Template attribute switches between a job front cover and a document front cover depending on the value of the  
 1277 “multiple-document-handling” Job Template attribute.

### 1278 7.1.4 job-finishings (1setOf type2 enum) Job Template attribute

1279 This attribute specifies the job finishings, i.e., with all of the Document objects taken together. Its interpretation is  
 1280 independent of the value of the “multiple-document-handling” Job Template attribute. See the “finishings” Job  
 1281 Template attribute defined in [RFC2911] section 4.2.6 which switches between job finishings and document  
 1282 finishings depending on the value of the “multiple-document-handling” Job Template attribute.

### 1283 7.1.5 job-finishings-col (1setOf collection) Job Template attribute

1284 This attribute specifies the job finishings collection, i.e., with all of the Document objects taken together. Its  
 1285 interpretation is independent of the value of the “multiple-document-handling” Job Template attribute. See the  
 1286 “finishings” Job Template attribute defined in [RFC2911] section 4.2.6 which switches between job finishings  
 1287 collection and document finishings collection depending on the value of the “multiple-document-handling” Job  
 1288 Template attribute.

1289

1290

1291 **8 Job Description and Document Description attributes**

1292 Table 7 lists all the Job Description defined in other IPP specifications and the corresponding Document Description  
 1293 attributes defined in this IPP specification. Job Description and Document Description attributes are Job object and  
 1294 Document object attributes, respectively, that are filled in by the Printer. Some Job/Document Description attribute  
 1295 values are supplied by the client in the Job/Document Creation operation using corresponding Operation attributes  
 1296 as flagged with “\*\*\*”.

1297 The column labeled “attribute syntax” indicates the attribute syntax (see [RFC2911] section 4.1). The Printer  
 1298 conformance is indicated along with the reference to the specification in which the attribute is defined. The  
 1299 conformance for Document Description attributes (if the Printer supports the Document object) is the same as the  
 1300 corresponding Job Description attributes.

1301 Note: There are no corresponding Page Range (or Page Override) Description attributes. The Page Range is not an  
 1302 object with a state and it cannot be queried.

1303 Legend:

1304 [job-] indicates an attribute that shouldn't have had a “job-” prefix in its name in [RFC2911], so that the same  
 1305 attribute could also apply to the Document object as a Document Description attribute. Note: For the PWG  
 1306 Semantic Model, the “job-” prefix is proposed to be dropped.

1307  
 1308  
 1309  
 1310 “-” indicates that the Job or Document attribute is *not* defined.

1311 \*\* indicates a Job and/or Document Description attribute that the client MAY supply the values for in a  
 1312 corresponding Operation attribute.

1313 (r/w) indicates that the Job Description or Document Description attribute is read/write, so that the client can  
 1314 changes its value using the Set-Job-Attributes or Set-Document-Attributes operation (see section 3.7).

1315 **ISSUE 12: The “document-name” Document Description attribute is settable by Set-Document-Attributes**  
 1316 **(like “job-name”)? But It's the only Document Description attribute that is marked (r/w)? Do we really need**  
 1317 **to be able to let a client change the “document-name” with the Set-Document-Attributes operation?**

1318 **Table 7 - Job and Document Description attributes**

IPP Job Description / Document Description attribute name	IPP Attribute Syntax	Job	Doc	Printer conformance	Reference
attributes-charset	charset	y	y	MUST	[RFC2911] §4.3.19
attributes-natural-language	naturalLanguage	y	y	MUST	[RFC2911] §4.3.20
compression**	type3 keyword	y	y	MUST	[RFC2911] §3.2.1.1
current-page-order	type2 keyword	y <sup>27</sup>	y	MAY	[prod-print] §4.1
date-time-at-completed	dateTime	y	y	MAY	[RFC2911] §4.3.14.7
date-time-at-creation	dateTime	y	y	MAY	[RFC2911] §4.3.14.5
date-time-at-processing	dateTime	y	y	MAY	[RFC2911] §4.3.14.6
document-format**	documentFormat	y	y	MUST	[RFC2911] §3.2.1.1

<sup>27</sup> When documents in a multiple document job have the same page order, the Printer populates both the Job and Document “current-page-order” with the same value, so that clients that only know about the Job Description attribute will get a value. When the page orders differ, the Printer doesn't populate the “current-page-order” Job Description attribute, but only the Document Description attribute of each Document.

IPP Job Description / Document Description attribute name	IPP Attribute Syntax	Job	Doc	Printer conform ance	Reference
<b>document-id-uri</b>	uri	-	y	<b>MUST?</b> <b>ISSUE</b> <b>13</b>	[this spec] §8.8
<b>document-name (r/w) **</b>	name(MAX)	y	y	MUST	[RFC2911] §3.2.1.1
<b>document-natural-language**</b>	naturalLanguage	y	y	MAY	[RFC2911] §3.2.1.1
<b>document-number</b>	integer(0:MAX)	-	y	MUST	[this spec] §8.1
<b>document-state</b>	type1 enum	-	y	MUST	[this spec] §8.3.2
<b>document-state-message</b>	text(MAX)	-	y	MAY	[this spec] §8.7
<b>document-state-reasons</b>	1setOf type2 keyword	-	y	MUST	[this spec] §8.5
<b>document-uri **</b>	uri	-	y	MAY	[this spec] §8.9
<b>impressions-completed-current-copy</b>	integer(0:MAX)	y	y	MAY	[job-prog] §4.4
<b>job-collation-type</b>	type2 enum	y	-	MAY	[job-prog] §4.1
<b>[job-]detailed-status-message</b>	1setOf text (MAX)	y	y	MAY	[RFC2911] §4.3.10
<b>[job-]document-access-errors</b>	1setOf text(MAX)	y	y	MAY	[RFC2911] §4.3.11
<b>job-id</b>	integer(1:MAX)	y	- <sup>28</sup>	MUST	[RFC2911] §4.3.2
<b>[job-]impressions **</b>	integer(0:MAX)	y	y	MAY	[RFC2911] §4.3.17.2
<b>[job-]impressions-completed</b>	integer(0:MAX)	y	y	MAY	[RFC2911] §4.3.18.2
<b>[job-]k-octets **</b>	integer(0:MAX)	y	y	MAY	[RFC2911] §4.3.17.1
<b>[job-]k-octets-processed</b>	integer(0:MAX)	y	y	MAY	[RFC2911] §4.3.18.1
<b>[job-]media-sheets **</b>	integer(0:MAX)	y	y	MAY	[RFC2911] §4.3.17.3
<b>[job-]media-sheets-completed</b>	integer(0:MAX)	y	y	MAY	[RFC2911] §4.3.18.3
<b>job-message-from-operator</b>	text(127)	y	- <b>ISS</b> <b>UE</b> <b>14</b>	MAY	[RFC2911] §4.3.16
<b>[job-]more-info</b>	uri	y	y	MAY	[RFC2911] §4.3.4
<b>job-name (r/w) ISSUE</b>	name(MAX)	y	- <sup>29</sup>	MUST	[RFC2911] §4.3.5
<b>job-originating-user-name</b>	name (MAX)	y	-	MUST	[RFC2911] §4.3.6
<b>job-printer-make-and-model</b>	text(127)	y	-	CMUST <sub>30</sub>	[RFC2911] §4.3.14.4
<b>[job-]printer-up-time</b>	integer (1:MAX)	y	y	MUST	[RFC2911] §4.3.14.4
<b>job-printer-uri</b>	uri	y	-	MUST	[RFC2911] §4.3.3
<b>job-state</b>	type1 enum	y	- <sup>31</sup>	MUST	[RFC2911] §4.3.7
<b>job-state-message</b>	text(MAX)	y	- <sup>32</sup>	MAY	[RFC2911] §4.3.9
<b>job-state-reasons</b>	1setOf type2 keyword	y	- <sup>33</sup>	MUST	[RFC2911] §4.3.8
<b>job-uri</b>	uri	y	- <sup>34</sup>	MUST	[RFC2911] §4.3.1

<sup>28</sup> The Document Description attribute that corresponds to the “job-id” Job Description attribute is the (new) “document-number” attribute.

<sup>29</sup> The Document Description attribute that corresponds to the “job-name” Job Description attribute is the (existing) “document-name” attribute defined in [RFC2911].

<sup>30</sup> The “job-printer-make-and-model” Job Description attribute MUST be supported if the “job-save-disposition” Job Template attribute is supported.

<sup>31</sup> The Document Description attribute that corresponds to the “job-state” Job Description attribute is the (new) “document-state” attribute.

<sup>32</sup> There is no Document Description attribute that corresponds to the “job-state-message”. Printers can use the “job-state-message” to describe any document level conditions.

<sup>33</sup> The Document Description attribute that corresponds to the “job-state-reasons” Job Description attribute is the (new) “document-state-reasons” attribute.

IPP Job Description / Document Description attribute name	IPP Attribute Syntax	Job	Doc	Printer conform ance	Reference
<b>[job-]warnings-count</b>	integer(0:MAX)	y	y	MAY	[override] §6.1
<b>last-document **</b>	boolean	-	y	MAY	[RFC2911] §4.3.12
<b>number-of-documents</b>	integer(0:MAX)	y	-	MAY	[RFC2911] §4.3.15
<b>number-of-intervening-jobs</b>	integer(0:MAX)	y	-	MAY	[RFC2911] §4.3.13
<b>output-device-assigned</b>	name(127)	y	-	MAY	[RFC2911] §4.3.7.2
<b>sheet-completed-copy-number</b>	integer(0:MAX)	y	y	MAY	[job-prog] §4.2
<b>sheet-completed-document-number</b>	integer(0:MAX)	y	-	MAY	[job-prog] §4.3
<b>time-at-completed</b>	integer (MIN:MAX)	y	y	MUST	[RFC2911] §4.3.14.3
<b>time-at-creation</b>	integer (MIN:MAX)	y	y	MUST	[RFC2911] §4.3.14.1
<b>time-at-processing</b>	integer (MIN:MAX)	y	y	MUST	[RFC2911] §4.3.14.2

1319 **\*\*\*** See the description in the Legend before the table.

1320

1321

1322

1323

1324

1325

1326

1327

1328

Most of the existing “job-state” and “job-state-reasons” Job Description attribute values apply equally well to individual documents in a multi-document job (with removal of the ‘job-’ prefix for those that apply to both Job and Document). Furthermore, the job states are completely service-type neutral, so they can apply to scanning, faxing, formatting processes as well. The job state reasons have a number of reasons that are print service specific, but most can apply to other types of service as well. The reason for separating state from reasons, is so that the states can be the fundamental states that most implementations have, while the state reasons can vary depending on the sophistication of the system. The states are the ones that clients are most likely to base actions upon, and the state reasons are more information, both for programs and people.

1329

1330

1331

1332

1333

The descriptions of the new “document-state” and “document-state-reasons” attributes are merged in with the existing “job-state” and “job-state-reasons”. Such merging shows the parallelism in the description to aid understanding and implementation and so that future maintenance will continue this strong parallelism. The “/” character separates the words: Job from Document so that the same description can serve for both Job and Document objects.

1334

## 8.1 document-number (integer(1:MAX))

## Document Description attribute

1335

1336

1337

This Document Description attribute is the ordinal number of the document within the job which determines its order of being printed in a multi-document job. The Printer generates the values monotonically increasing from 1 for a job. However, the client MAY supply the value in the “input-document-number” operation attribute.

1338

## 8.2 job-state (type1 enum)

## Job Description attribute

1339

## 8.3 document-state (type1 enum)

## Document Description attribute

1340

1341

1342

1343

1344

The REQUIRED “job-state” and the REQUIRED “document-state” attribute identify the current state of the job and document, respectively. Even though IPP defines seven values for job/document states (plus the out-of-band ‘unknown’ value - see [RFC2911] section 4.1), implementations only need to support those states which are appropriate for the particular implementation. In other words, an IPP Printer object implementation supports only those job/document states implemented by the output device and available to the IPP Printer object implementation.

1345

Table 8 lists the “job-state” and “document-state” attribute values.

<sup>34</sup> The “job-uri” Job Description attribute does not have a corresponding Document Description attribute. The “job-uri” has proved problematic enough.

1346

**Table 8 - "job-state" and "document-state" attribute values**

Values	"job-state"	"document-state"
3 pending	y	y
4 pending-held	y	n/a
5 processing	y	y
6 processing-stopped	y	n/a
7 canceled	y	y
8 aborted	y	y
9 completed	y	y

1347

1348 The (JD) and (J) notation below indicates whether the keyword is defined for the "job-state" and "document-state"  
 1349 attributes or just the "job-state" attribute as indicated in Table 8. Standard enum values are:

Value	Symbolic Name and Description
'3'	<b>'pending'</b> (JD): The job is a candidate to start processing, but is not yet processing. The document has not started to be processed at all.
'4'	<b>'pending-held'</b> (J): The job is not a candidate for processing for any number of reasons but will return to the 'pending' state as soon as the reasons are no longer present. The job's "job-state-reason" attribute <b>MUST</b> indicate why the job is no longer a candidate for processing. The 'pending-held' state does not apply to the Document object's "document-state" attribute.
'5'	<b>'processing'</b> (JD): One or more of: <ol style="list-style-type: none"> <li>1. The job is using, or is attempting to use, one or more purely software processes that are analyzing, creating, or interpreting a PDL, etc.,</li> <li>2. The job is using, or is attempting to use, one or more hardware devices that are interpreting a PDL, making marks on a medium, and/or performing finishing, such as stapling, etc.,</li> <li>3. The Printer object has made the job ready for printing, but the output device is not yet printing it, either because the job hasn't reached the output device or because the job is queued in the output device or some other spooler, awaiting the output device to print it.</li> </ol> <p>When the job is in the 'processing' state, the entire job/document state includes the detailed status represented in the Printer object's "printer-state", "printer-state-reasons", and "printer-state-message" attributes.</p> <p>On the other hand, the 'processing' state for the Document indicates that the Document has begun to be processed. Even if the job stops being processed, the Document remains in the 'processing' state until it moves to one of the three terminal states.</p> <p>Implementations <b>MAY</b>, though they <b>NEED NOT</b>, include additional values in the job's/document's "job-state-reasons"/"document-state-reasons" attribute to indicate the progress of the job/document, such as adding the 'job-printing'/'printing' value to indicate when the output device is actually making marks on paper and/or the 'processing-to-stop-point' value to indicate that the Printer is in the process of canceling or aborting the job/document. Most implementations won't bother with this nuance.</p>
'6'	<b>'processing-stopped'</b> (J): The job has stopped while processing for any number of reasons and will return to the 'processing' state as soon as the reasons are no longer present.

Value	Symbolic Name and Description
	<p>The job's "job-state-reason" attribute MAY indicate why the job has stopped processing. For example, if the output device is stopped, the 'printer-stopped' value MAY be included in the job's "job-state-reasons" attribute.</p> <p>Note: When an output device is stopped, the device usually indicates its condition in human readable form locally at the device. A client can obtain more complete device status remotely by querying the Printer object's "printer-state", "printer-state-reasons" and "printer-state-message" attributes.</p> <p>The 'processing-stopped' state does not apply to the Document object's "document-state" attribute.</p>
'7'	<p><b>'canceled'</b> (JD): The job/document has been canceled by a Cancel-Job/Cancel-Documents operation and the Printer object has completed canceling the job/document and all job/document status attributes have reached their final values for the job/document. While the Printer object is canceling the job/document, the job/document remains in its current state, but the job's/document's "job-state-reasons"/"document-state-reasons" attribute SHOULD contain the 'processing-to-stop-point' value and one of the 'canceled-by-user', 'canceled-by-operator', or 'canceled-at-device' value. When the job/document moves to the 'canceled' state, the 'processing-to-stop-point' value, if present, MUST be removed, but the 'canceled-by-xxx', if present, MUST remain.</p>
'8'	<p><b>'aborted'</b> (JD): The job/document has been aborted by the system, usually while the job/document was in the 'processing' or 'processing-stopped' state and the Printer has completed aborting the job/document and all job/document status attributes have reached their final values for the job/document. While the Printer object is aborting the job/document, the job/document remains in its current state, but the job's/document's "job-state-reasons"/"document-state-reasons" attribute SHOULD contain the 'processing-to-stop-point' and 'aborted-by-system' values. When the job/document moves to the 'aborted' state, the 'processing-to-stop-point' value, if present, MUST be removed, but the 'aborted-by-system' value, if present, MUST remain.</p>
'9'	<p><b>'completed'</b> (JD): The job/document has completed successfully or with warnings or errors after processing and all of the job/document media sheets have been successfully stacked in the appropriate output bin(s) and all job/document status attributes have reached their final values for the job/document. The job's/document's "job-state-reasons"/"document-state-reasons" attribute SHOULD contain one of: 'completed-successfully', 'completed-with-warnings', or 'completed-with-errors' values.</p>

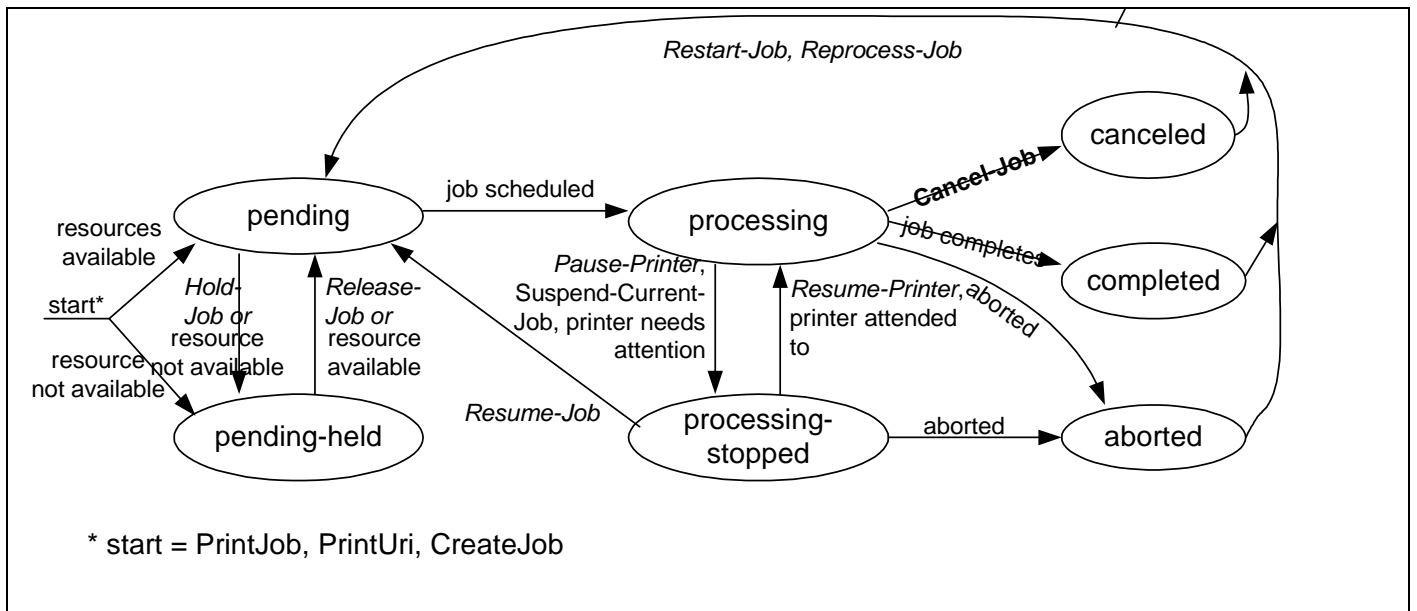
1350 The final value for this attribute MUST be one of: 'completed', 'canceled', or 'aborted' before the Printer removes the  
 1351 job/document altogether. The length of time that jobs/document remain in the 'canceled', 'aborted', and 'completed'  
 1352 states depends on implementation.

1353 Jobs/documents reach one of the three terminal states: 'completed', 'canceled', or 'aborted', after the jobs/documents  
 1354 have completed all activity, including stacking output media, after the jobs/documents have completed all activity,  
 1355 and all job/document status attributes have reached their final values for the job/document.

### 1356 8.3.1 The "job-state" Job Description attribute and the Job Life Cycle

1357 The "job-state" attribute is one of the most important Job Description attributes. Figure 1 shows the values of the  
 1358 "job-state" attribute and the Job object life cycle as affected by actions on the Job, Printer, and job processing.





**Figure 1 - The “job-state” Job Description attribute and the Job object life cycle**

Normally a job progresses from left to right. Other state transitions are unlikely, but are not forbidden. Not shown are the transitions to the 'canceled' state from the 'pending', 'pending-held', and 'processing-stopped' states.

**8.3.2 The “document-state” Document Description attribute and the Document object life Cycle**

The “document-state” attribute is one of the most important Document Description attributes. Figure 2 shows the values of the “document-state” attribute and the Document object life cycle as affected by actions on the Job, Document, Printer, and job processing. Documents are not active objects and their life cycle is closely tied to the lifecycle of a Job<sup>35</sup>. Documents basically have three states. The first is waiting to be processed by a Job (i.e. pending). The second state is from the time the Job first starts processing the Document (i.e., processing) and until it reaches one of its terminal states. The third state for a Document is one of its terminal states (i.e., completed, canceled, or aborted).

<sup>35</sup> The Document object is not really a sub-job. If the Document object were its own independent active object, i.e., were a sub-job, then the Document state would affect the job state and there would be complex and debatable roll-up rules for how the various “document-state” values of all of the Job’s document are rolled up to give a single value for the Job’s “job-state” attribute. Instead, the Job state reflects the overall processing of the job and is the same whether or not the Document object is supported.

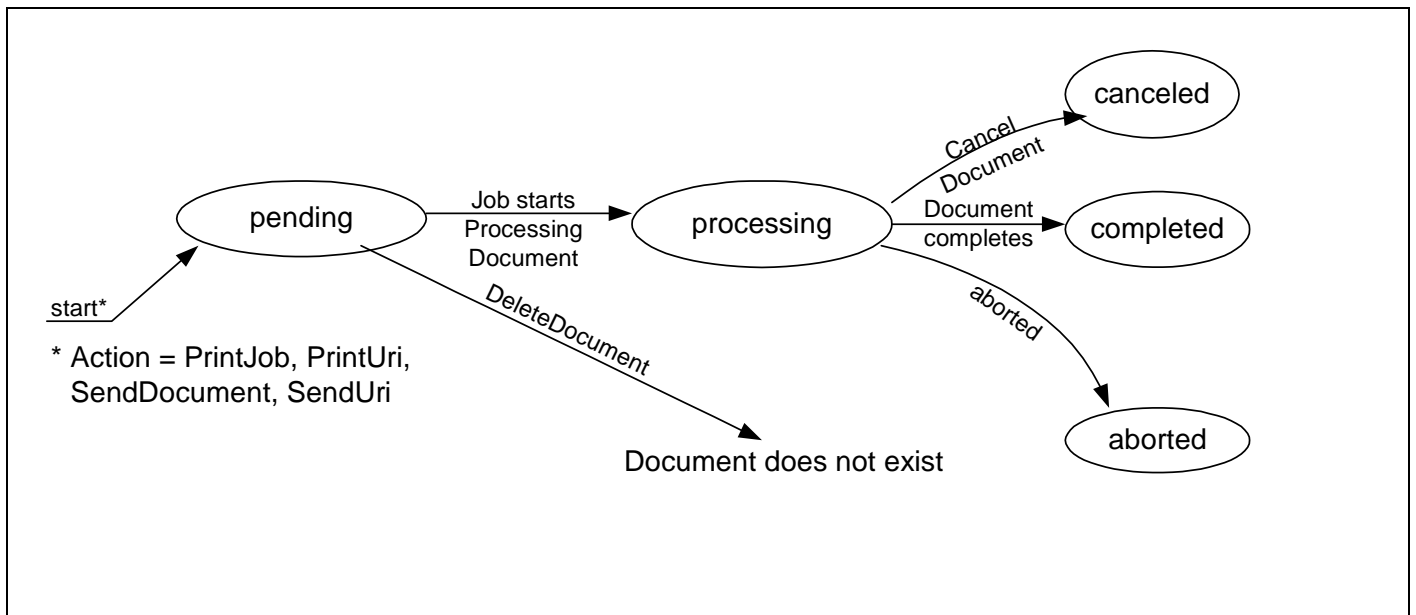


Figure 2 - The “document-state” Document Description attribute and the Document object life Cycle

A Document object has a much simpler life cycle than a Job object. A Document always progresses from left to right in the state diagram. No other state transitions are defined.

### 8.3.3 Forwarding Servers

As with all other IPP attributes, if the implementation can not determine the correct value for this attribute, it SHOULD respond with the out-of-band value 'unknown' (see [RFC2911] Section 4.1) rather than try to guess at some possibly incorrect value and give the end user the wrong impression about the state of the Job/Document object. For example, if the implementation is just a gateway into some printing system from which it can normally get status, but temporarily is unable, then the implementation should return the 'unknown' value. However, if the implementation is a gateway to a printing system that never provides detailed status about the print job/document, the implementation MAY set the IPP Job/Document object's state to 'completed', provided that it also sets the 'queued-in-device' value in the job's/document's "job-state-reasons"/"document-state-reasons" attribute (see "job-state-reasons"/"document-state-reasons" attribute below).

### 8.3.4 Partitioning of Job/Document States

This section partitions the job/document states into phases: Job/Document Not Completed, Job/Document Retention, Job/Document History, and Job/Document Removal. This section also explains the 'job-restartable' value of the "job-state-reasons" Job Description attribute for use with the Restart-Job operation.

**Job/Document Not Completed:** When a job is in the 'pending', 'pending-held', 'processing', or 'processing-stopped' states, the job is not completed. When a Document is in the 'pending' or 'processing' state, it is not completed.

**Job Retention:** When a job enters one of the three terminal job states: 'completed', 'canceled', or 'aborted', the IPP Printer object MAY "retain" the job in a restartable condition for an implementation-defined time period. This time period MAY be zero seconds and MAY depend on the terminal job state. This phase is called Job Retention. While in the Job Retention phase, the job's document data is retained and a client may restart the job using the Restart-Job operation. If the Printer supports the Restart-Job operation, then it SHOULD indicate that the job is restartable by

1399 adding the 'job-restartable' value to the job's "job-state-reasons" attribute (see Section 8.4) during the Job Retention  
 1400 phase. If the Printer supports the Document object, then the Get-Document-Attributes and Get-Documents  
 1401 operations MUST be supported while the job is in the Job Retention phase.

1402 **Job History:** After the Job Retention phase expires for a job, the Printer object deletes the document data for the  
 1403 job and the job becomes part of the Job History. The Printer object MAY also delete any number of the job and  
 1404 document attributes. Since the job is no longer restartable, the Printer object MUST remove the 'job-restartable'  
 1405 value from the job's "job-state-reasons" attribute, if present. If the implementation supports the Document object, it  
 1406 SHOULD retain at least the "document-state" and "document-state-reasons" attributes on the Document object  
 1407 during the Job History phase which can be queried using the Get-Document-Attributes and Get-Documents  
 1408 operations.

1409 **Job Removal:** After the job has remained in the Job History for an implementation-defined time, such as when the  
 1410 number of jobs exceeds a fixed number or after a fixed time period (which MAY be zero seconds), the IPP Printer  
 1411 removes the Job and Document objects from the system.

1412 Using the Get-Jobs/Get-Documents operation and supplying the 'not-completed' value for the "which-jobs" operation  
 1413 attribute, a client is requesting jobs/documents in the Job/Document Not Completed phase. Using the Get-Jobs/Get-  
 1414 Documents operation and supplying the 'completed' value for the "which-jobs" operation attribute, a client is  
 1415 requesting jobs/documents in the Job Retention and Job History phases. Using the Get-Job-Attributes/Get-  
 1416 Document-Attributes operation, a client is requesting a job/documents in any phase except Job Removal. After Job  
 1417 Removal, the Get-Job-Attributes/Get-Documents and Get-Jobs/Get-Documents operations no longer are  
 1418 capable of returning any information about a job/document.

1419 NOTE: The semantics of this attribute or the set of valid values may be different for different document formats.

## 1420 **8.4 job-state-reasons (1setOf type2 keyword) Job Description attribute**

## 1421 **8.5 document-state-reasons (1setOf type2 keyword) Document Description attribute**

1422 The REQUIRED "job-state-reasons" and the REQUIRED "document-state-reasons" attributes provide additional  
 1423 information about the job's and each document's current state, i.e., information that augments the value of the job's  
 1424 "job-state" attribute and each Document's "document-state" attribute, respectively. The Printer SHOULD support the  
 1425 same values for both the "job-state-reasons" and the "document-state-reasons" attribute for those attributes that are  
 1426 defined for both as indicated in the "Job" and "Doc" columns in Table 9.

1427 These values MAY be used with any job or document state or states for which the reason makes sense. Some of  
 1428 these value definitions indicate conformance requirements; the rest are OPTIONAL. Furthermore, when  
 1429 implemented, the Printer MUST return these values when the reason applies and MUST NOT return them when the  
 1430 reason no longer applies whether the value of the Job's "job-state" attribute or the Document's "document-state"  
 1431 attribute changed or not. When the Job or Document does not have any reasons for being in its current state, the  
 1432 value of the Job's "job-state-reasons" attribute or Document's "document-state-reasons" attribute MUST be 'none'.

1433 Note: While values cannot be added to the "job-state" or "document-state" attributes without impacting deployed  
 1434 clients that take actions upon receiving "job-state" or "document-state" values, it is the intent that additional "job-  
 1435 state-reasons" and "document-state-reasons" values can be defined and registered without impacting such deployed  
 1436 clients. In other words, the "job-state-reasons" and the "document-state-reasons" attributes are intended to be  
 1437 extensible.

1438 The following standard keyword values are defined for the "job-state-reasons" and/or "document-state-reasons"  
 1439 attributes as shown in Table 9. In Table 9 the keywords are listed in alphabetic order (observing the "[job-]" prefix),  
 1440 while in their descriptions following, they are listed in the most likely order of occurrence.

1441 When the Document object is supported, the Printer implementation SHOULD still support the corresponding Job  
 1442 level "job-state-reasons", so that clients that do not support the Document object will receive the same information.  
 1443 Also it is usually more convenient for the client to obtain just the Job level status.

1444 **Notation:**

1445 **[job-]** indicates a state reason keyword value that has the 'job-' prefix when it is a value of the "job-state-reasons"  
 1446 attribute, but does not have the 'job-' prefix when it is a value of the "document-state-reasons" attribute<sup>36</sup>.  
 1447 For purposes of sorting in Table 9, the "[job-]" prefix is observed, since this is an IPP specification.

1451 "-" indicates that the Job or Document value is *not* defined.

1454 **Table 9 - "job-state-reasons" and "document-state-reasons" attribute values**

IPP Job Description / Document Description attribute name	IPP Attribute Syntax plus Values	Job	Doc	Printer conformance	Reference
<b>job-state-reasons</b>	1setOf type2 keyword	y	- <sup>37</sup>	MUST	[RFC2911] §4.3.8
<b>document-state-reasons</b>	1setOf type2 keyword	-	y	MUST	[this spec] §8.5
	aborted-by-system	y	y	MAY	[RFC2911] §4.3.8
	compression-error	y	y	MAY	[RFC2911] §4.3.8
	document-access-error	y	y	MAY	[RFC2911] §4.3.8
	document-format-error	y	y	MAY	[RFC2911] §4.3.8
	[job-]canceled-at-device	y	y	MAY	[RFC2911] §4.3.8
	[job-]canceled-by-operator	y	y	MAY	[RFC2911] §4.3.8
	[job-]canceled-by-user	y	y	MAY	[RFC2911] §4.3.8
	[job-]completed-successfully	y	y	MAY	[RFC2911] §4.3.8
	[job-]completed-with-errors	y	y	MAY	[RFC2911] §4.3.8
	[job-]completed-with-warnings	y	y	MAY	[RFC2911] §4.3.8
	job-data-insufficient	y	-	MAY	[RFC2911] §4.3.8
	job-hold-until-specified	y	-	MAY	[RFC2911] §4.3.8
	[job-]incoming	y	y	MAY	[RFC2911] §4.3.8
	[job-]interpreting	y	y	MAY	[RFC2911] §4.3.8
	[job-]outgoing	y	y	MAY	[RFC2911] §4.3.8
	job-password-wait	y	-	MAY	[prod-print2] §8.3.1
	[job-]printing	y	y	MAY	[RFC2911] §4.3.8
	[job-]queued	y	y	MAY	[RFC2911] §4.3.8
	[job-]queued-for-marker	y	y	MAY	[RFC2911] §4.3.8
	job-restartable	y	-	MAY	[RFC2911] §4.3.8
	job-resuming	y	-	MAY	[prod-print2] §8.3.1
	<u>job-saved-successfully</u>	y	-	MAY	[prod-print2] §8.3.1
	<u>job-save-error</u>	y	-	MAY	[prod-print2] §8.3.1
	<u>job-saving</u>	y	-	MAY	[prod-print2] §8.3.1
	job-scheduling	y	-	MAY	[prod-print2] §8.3.1

<sup>36</sup> For the PWG Semantic Model [pwg-sm], the "job-" prefix is being dropped altogether so that the same values can be used for both the JobStateReasons and DocumentStateReasons attributes.

<sup>37</sup> The Document Description attribute that corresponds to the "job-state-reasons" Job Description attribute is the (new) "document-state-reasons" attribute.

IPP Job Description / Document Description attribute name	IPP Attribute Syntax plus Values	Job	Doc	Printer conformance	Reference
	[job-]spooling	y	y	MAY	[prod-print2] §8.3.1
	[job-]streaming	y	y	MAY	[prod-print2] §8.3.1
	job-suspended	y	-	MAY	[adm-ops] §9.1
	<u>job-suspended-by-operator</u>	y	-	MAY	[prod-print2] §8.3.1
	<u>job-suspended-by-system</u>	y	-	MAY	[prod-print2] §8.3.1
	<u>job-suspended-by-user</u>	y	-	MAY	[prod-print2] §8.3.1
	<u>job-suspending</u>	y	-	MAY	[prod-print2] §8.3.1
	[job-]transforming	y	y	MAY	[RFC2911] §4.3.8
	[job-]warnings-detected	y	y	MAY	[override] §7.1
	none	y	y	MUST	[RFC2911] §4.3.8
	printer-stopped	y	-	MAY	[RFC2911] §4.3.8
	printer-stopped-partly	y	-	MAY	[RFC2911] §4.3.8
	processing-to-stop-point	y	-	MAY	[RFC2911] §4.3.8
	proof-print-wait	y	-	MAY	[prod-print2] §8.3.1
	queued-in-device	y	y	MAY	[RFC2911] §4.3.8
	resources-are-not-ready	y	y ISSUE 15	MAY	[RFC2911] §4.3.8
	resources-are-not-supported	y	y	MAY	[prod-print] §6.1
	service-off-line	y	-	MAY	[RFC2911] §4.3.8
	submission-interrupted	y	y	MAY	[RFC2911] §4.3.8
	unsupported-compression	y	y	MUST	[RFC2911] §4.3.8
	unsupported-document-format	y	y	MUST	[RFC2911] §4.3.8

1455

1456

1457

1458

1459

For ease of understanding, the following value descriptions are presented in the order in which the reasons are likely to occur (if implemented), starting with the 'none' value. Note: The order is improved over that in [RFC2911]. The (JD), (J), and (D) notation is identical to the "Job" and "Doc" columns in Table 9 indicating whether the keyword is defined for the "job-state-reasons" and/or "document-state-reasons" attributes:

1460

1461

1462

1463

**'none' (JD):** There are no reasons for the job's or document's current state. This state reason is semantically equivalent to "job-state-reasons" or "document-state-reasons" attribute without any value and MUST be used when there is no other value, since the 1setOf attribute syntax requires at least one value.

1464

1465

1466

1467

**'job-hold-until-specified' (J):** The value of the job's "job-hold-until" attribute was specified with a time period that is still in the future. The job MUST NOT be a candidate for processing until this reason is removed and there are no other reasons to hold the job. This value SHOULD be supported if the "job-hold-until" Job Template attribute is supported.

1468

1469

1470

**'job-password-wait' (J):** The Job is currently being held until the correct password is entered at the device. If the "job-password" (octetString(255)) Operation attribute (See [prod-print2] section 4.1) is supported, this value MUST be supported.

1471

1472

1473

**'proof-print-wait' (J):** The job is currently being held until the operator verifies the output of the proof print and performs a Release-Job operation. If the "proof-print" (collection) Job Template attribute (See [prod-print2] section 5.9) is supported, this value MUST be supported.

1474

1475

1476

1477

1478

**'resources-are-not-supported' (JD):** At least one of the resources needed by the job/document, such as media, fonts, resource objects, etc., is not supported on any of the physical printers for which the job/document is a candidate. This condition MAY be detected when the job/document is accepted, or subsequently while the job/document is pending or processing, depending on implementation. The job/document may (1) remain in its current state, (2) be moved to the 'pending-held' state,

- 1479 depending on implementation and/or job scheduling policy, or (3) scheduled normally, but the Printer  
 1480 is put into the 'stopped' state when the job/document is attempted to be processed on the Printer.  
 1481 This value is intended for use with an implementation that supports the "user-defined-values-  
 1482 supported" Printer attribute (see [prod-print] section 6.1) which allows a job to be accepted with an  
 1483 unsupported 'name' value.
- 1484 **'resources-are-not-ready' (JD):** At least one of the resources needed by the job/document, such as media,  
 1485 fonts, resource objects, etc., is not ready on any of the physical printer's for which the job/document  
 1486 is a candidate. This condition MAY be detected when the job/document is accepted, or  
 1487 subsequently while the job/document is pending or processing, depending on implementation. The  
 1488 job/document may remain in its current state or be moved to the 'pending-held' state, depending on  
 1489 implementation and/or job/document scheduling policy.
- 1490 **'[job]-incoming' (JD):** Either (1) the Printer has accepted the Create-Job operation and is expecting  
 1491 additional Send-Document and/or Send-URI operations or (2) the Printer is retrieving/accepting  
 1492 document data as a result of a Print-Job, Print-URI, Send-Document or Send-URI operation.
- 1493 **'[job]-spooling' (JD):** Same as 'job-incoming' with the specialization that the Printer is spooling the  
 1494 Job/Document data before processing it. This value corresponds to the 'spool' or 'automatic' value of  
 1495 the "job-spooling-supported" Printer Description attribute.
- 1496 **'[job]-streaming' (JD):** Same as 'job-incoming' with the specialization that the Printer is processing the  
 1497 Job/Document data as it is being received (that is, the document is not being spooled, but rather is  
 1498 being processed in chunks by the output device and is being imaged during reception). This value  
 1499 corresponds to the 'stream' or 'automatic' value of the "job-spooling-supported" Printer Description  
 1500 attribute.
- 1501 **'job-data-insufficient' (J):** The Create-Job operation has been accepted by the Printer, but the Printer is  
 1502 expecting additional document data before it can move the job into the 'processing' state. If a Printer  
 1503 starts processing before it has received all data, the Printer removes the 'job-data-insufficient'  
 1504 reason, but the 'job-incoming' remains. If a Printer starts processing after it has received all data, the  
 1505 Printer removes the 'job-data-insufficient' reason and the 'job-incoming' at the same time.
- 1506 **'unsupported-compression' (JD):** The job/document was aborted by the system because the Printer  
 1507 determined while attempting to decompress the document-data's that the compression is actually not  
 1508 among those supported by the Printer. This value MUST be supported, since "compressions is a  
 1509 REQUIRED operation attribute.
- 1510 **'compression-error' (JD):** The job/document was aborted by the system because the Printer encountered  
 1511 an error in the document-data while decompressing it. If the Printer posts this reason, the document-  
 1512 data has already passed any tests that would have led to the 'unsupported-compression' job-state-  
 1513 reason/document-state-reason.
- 1514 **'document-access-error' (JD):** After accepting a Print-URI or Send-URI request, the Printer could not  
 1515 access one or more documents passed by reference. This reason is intended to cover any file  
 1516 access problem, including file does not exist and access denied because of an access control  
 1517 problem. The Printer MAY also indicate the document access error using the "job-document-access-  
 1518 errors" Job Description attribute (see the description of "job-document-access-errors" above).  
 1519 Whether the Printer aborts the job/document and moves the job/document to the 'aborted' job state  
 1520 or prints all documents that are accessible and moves the job/document to the 'completed'  
 1521 job/document state and adds the 'completed-with-errors' value in the job's "job-state-reasons" or  
 1522 document's "document-state-reasons" attribute depends on implementation and/or site policy. This  
 1523 value SHOULD be supported if the Print-URI or Send-URI operations are supported.
- 1524 **'unsupported-document-format' (JD):** The job/document was aborted by the system because the  
 1525 document-data's document-format is not among those supported by the Printer. If the client  
 1526 specifies the document-format as 'application/octet-stream', the printer MAY abort the job/document  
 1527 and post this reason even though the format is a member of the "document-format-supported" printer

- 1528 attribute, but not among the auto-sensed document-formats. This value MUST be supported, since  
1529 "document-format" is a REQUIRED operation attribute.
- 1530 **'document-format-error' (JD):** The job/document was aborted by the system because the Printer  
1531 encountered an error in the document-data while processing it. If the Printer posts this reason, the  
1532 document-data has already passed any tests that would have led to the 'unsupported-document-  
1533 format' job-state-reason/document-state-reason.
- 1534 **'submission-interrupted' (JD):** The job or document was not completely submitted for some unforeseen  
1535 reason, such as: (1) the Printer has crashed before the job was closed by the client, (2) the Printer or  
1536 the document transfer method has crashed in some non-recoverable way before the document data  
1537 was entirely transferred to the Printer, (3) the client crashed or failed to close the job before the time-  
1538 out period. See the description of the "multiple-operation-time-out" Printer attribute in [RFC2911]  
1539 Section 4.4.31.
- 1540 **'[job-]outgoing' (JD):** The Printer is transmitting the job/document to the output device.
- 1541 **'[job-scheduling' (J):** The printer is in the process of scheduling the processing for the Job.
- 1542 **'[job-]queued' (JD):** Job is in the 'processing' state, but more specifically, the Printer has queued the  
1543 Document data.
- 1544 **'[job-]transforming' (JD):** Job/document is in the 'processing' state, but more specifically, the Printer is  
1545 interpreting document data and producing another electronic representation.
- 1546 **'[job-]interpreting' (JD):** Job/document is in the 'processing' state, but more specifically, the Printer is  
1547 interpreting the document data.
- 1548 **'[job-]queued-for-marker' (JD):** Job/document is in any of the 'pending-held', 'pending', or 'processing'  
1549 states, but more specifically, the Printer has completed enough processing of the document to be  
1550 able to start marking and the job/document is waiting for the marker. Systems that require human  
1551 intervention to release jobs using the Release-Job operation, put the job into the 'pending-held' job  
1552 state. Systems that automatically select a job to use the marker put the job into the 'pending' job  
1553 state or keep the job in the 'processing' job state while waiting for the marker, depending on  
1554 implementation. All implementations put the job/document into (or back into) the 'processing' state  
1555 when marking does begin.
- 1556 **'[job-]printing' (JD):** The output device is marking media. This value is useful for Printers which spend a  
1557 great deal of time processing (1) when no marking is happening and then want to show that marking  
1558 is now happening or (2) when the job/document is in the process of being canceled or aborted while  
1559 the job/document remains in the 'processing' state, but the marking has not yet stopped so that  
1560 impression or sheet counts are still increasing for the job/document.
- 1561 **'printer-stopped-partly' (J):** The value of the Printer's "printer-state-reasons" attribute contains the value  
1562 'stopped-partly'.
- 1563 **'printer-stopped' (J):** The value of the Printer's "printer-state" attribute is 'stopped'.
- 1564 **'[job-suspending' (J):** The printer is in the process of moving the Job from a processing condition to a  
1565 suspended condition where other jobs can be processed.
- 1566 **'job-suspended' (J):** The job has been suspended while processing using the Suspend-Current-Job  
1567 operation and other jobs can be processed on the Printer. The Job can be resumed using the  
1568 Resume-Job operation which removes this value. Note: Documents cannot be suspended and there  
1569 is no Suspend-Current-Document operation.
- 1570 **'[job-suspended-by-operator' (J):** The Job has been indefinitely suspended by the printer operator.
- 1571 **'[job-suspended-by-user' (J):** The Job has been indefinitely suspended by the user.
- 1572 **'[job-suspended-by-system' (J):** The Job has been indefinitely suspended by the Printer's system software  
1573 during normal processing of the job.

- 1574 **'job-resuming' (J):** The printer is in the process of moving the Job from a suspended condition to become a  
 1575 candidate for processing.
- 1576 **'[job-]canceled-by-user' (JD):** The job/document was canceled by the owner of the job using the Cancel-  
 1577 Job/Cancel-Document request, i.e., by a user whose authenticated identity is the same as the value  
 1578 of the originating user that created the Job object, or by some other authorized end-user, such as a  
 1579 member of the job owner's security group. This 'job-canceled' value SHOULD be supported. The  
 1580 'canceled-by-user' value SHOULD be supported for the "document-state-reasons" attributes if the  
 1581 Cancel-Document operation is supported.
- 1582 **'[job-]canceled-by-operator' (JD):** The job/document was canceled by the operator using the Cancel-  
 1583 Job/Cancel-Document request, i.e., by a user who has been authenticated as having operator  
 1584 privileges (whether local or remote). If the security policy is to allow anyone to cancel anyone's  
 1585 job/document, then these values may be used when the job/document is canceled by other than the  
 1586 owner of the job. For such a security policy, in effect, everyone is an operator as far as canceling  
 1587 jobs/documents is concerned. These values SHOULD be supported if the implementation permits  
 1588 canceling by other than the owner of the job.
- 1589 **'[job-]canceled-at-device' (JD):** The job/document was canceled by an unidentified local user, i.e., a user  
 1590 at a console at the device. This value SHOULD be supported if the implementation supports  
 1591 canceling jobs/documents at the console.
- 1592 **'aborted-by-system' (JD):** The job/document (1) is in the process of being aborted, (2) has been aborted by  
 1593 the system and placed in the 'aborted' state, or (3) has been aborted by the system and placed in the  
 1594 'pending-held' state, so that a user or operator can manually try the job/document again. This value  
 1595 SHOULD be supported.
- 1596 **'processing-to-stop-point' (J):** The requester has issued a Cancel-Job/Cancel-Document operation or the  
 1597 Printer object has aborted the job/document, but is still performing some actions on the job/document  
 1598 until a specified stop point occurs or job/document termination/cleanup is completed.  
 1599 If the implementation requires some measurable time to cancel the job/document in the 'processing'  
 1600 or 'processing-stopped' job/document states, the Printer MUST use this value to indicate that the  
 1601 Printer object is still performing some actions on the job/document while the job/document remains in  
 1602 the 'processing' or 'processing-stopped' state. After all the job's/document's job/document  
 1603 description attributes have stopped incrementing, the Printer object moves the job/document from  
 1604 the 'processing' state to the 'canceled' or 'aborted' job/document states.
- 1605 **'service-off-line' (J):** The Printer is off-line and accepting no jobs. All 'pending' jobs are put into the  
 1606 'pending-held' state. This situation could be true if the service's or document transform's input is  
 1607 impaired or broken.
- 1608 **'[job-]warnings-detected' (JD):** If the Printer supports these values, the Printer MUST add the value to "job-  
 1609 state-reasons" / "document-state-reasons" when it generates the first warning message. That is, a  
 1610 single occurrence of this value is present in the "job-state-reasons" / "document-state-reasons" if the  
 1611 Printer has generated one or more warnings.
- 1612 **'[job-]completed-successfully' (JD):** The job/document completed successfully. There were no warnings  
 1613 or errors in printing. This value SHOULD be supported.
- 1614 **'[job-]completed-with-warnings' (JD):** The print part of the job/document completed with warnings  
 1615 (whether or not there were save errors). This value SHOULD be supported if the implementation  
 1616 detects warnings. [RFC2911]
- 1617 **'[job-]completed-with-errors' (JD):** The print part of the job/document completed with errors (and possibly  
 1618 warnings too) (whether or not there were save errors). This value SHOULD be supported if the  
 1619 implementation detects errors. [RFC2911]
- 1620 **'job-saving' (J):** The Printer is transmitting the Job to the save location. This is similar to the 'job-printing'  
 1621 value.
- 1622 **'job-saved-successfully' (J):** The Printer saved the Job successfully.



1623 **'job-save-error' (J):** The Printer did not save the Job successfully (whether or not it was printed successfully,  
 1624 printed with warnings, printed with errors, or not printed). The Printer MUST ensure that none of the  
 1625 saved job is accessible, if it was unable to successfully save all of the job.

1626 **'job-restartable' (J):** This job is retained (see the description of "job-state" above, specifically "Partitioning of  
 1627 Job States") and is currently able to be restarted using the Restart-Job operation (see [RFC2911]  
 1628 Section 3.3.7). If 'job-restartable' is a value of the job's "job-state-reasons" attribute, then the Printer  
 1629 MUST accept a Restart-Job operation for that job. This value SHOULD be supported if the Restart-  
 1630 Job operation is supported.

1631 **'queued-in-device' (JD):** The job/document has been forwarded to a device or print system that is unable to  
 1632 send back status. The Printer sets the job's/document's "job-state" / "document-state" attribute to  
 1633 'completed' and adds the 'queued-in-device' value to the job's/document's "job-state-reasons" /  
 1634 "document-state-reasons" attribute to indicate that the Printer has no additional information about the  
 1635 job/document and never will have any better information. See the description of the "job-state" /  
 1636 "document-state" attribute above, specifically the portion on "Forwarding Servers".

1637 NOTE: The semantics of this attribute or the set of valid values may be different for different document formats.

## 1638 8.6 job-state-message (text(MAX))

**Job Description attribute**

## 1639 8.7 document-state-message (text(MAX))

**Document Description attribute**

1640 This attribute specifies information about the "job-state"/"document-state" and "job-state-reasons"/"document-state-  
 1641 reasons" attributes in human readable text. If the Printer object supports this attribute, the Printer object MUST be  
 1642 able to generate this message in any of the natural languages identified by the Printer's "generated-natural-  
 1643 language-supported" attribute (see the "attributes-natural-language" operation attribute specified in [RFC2911]  
 1644 Section 3.1.4.1).

1645 The value SHOULD NOT contain additional information not contained in the values of the "job-state" and "job-states-  
 1646 reasons" attributes, such as interpreter error information. Otherwise, application programs might attempt to parse the  
 1647 (localized text). For such additional information such as interpreter errors for application program consumption or  
 1648 specific document access errors, new attributes with keyword values, needs to be developed and registered.

## 1649 8.8 document-id-uri (uri)

**Document Description attribute**

1650 This Document Description attribute is generated by the Printer as a unique URI to identify a Document object, in the  
 1651 same way that the "job-uri" (uri) Job Description attribute uniquely identifies a Job object.

1652 **ISSUE 16:** Should the "document-id-uri" Document Description attribute be REQUIRED for the Printer to support in  
 1653 any Document Creation operation, as a way of uniquely identifying a Document object across all Printers?

1654 **ISSUE 17:** Should we REQUIRE the Printer to accept a "document-id-uri" as an alternative way for clients to specify  
 1655 the target of Document object operations? I know that implementers have grumbled about the "job-uri" being  
 1656 REQUIRED for the Printer to support and accept as the target.

## 1657 8.9 document-uri (uri)

**Document Description attribute**

1658 This Document Description attribute is the URI that the client supplied in a Send-URI operation. The Printer MUST  
 1659 support this attribute if the Printer supports the Send-URI operation (see section 3.4).

1660 **9 Printer attributes**

1661 This section lists *all* of the Printer attributes defined in other IPP documents. Printer attributes are divided into three  
 1662 disjoint groups:  
 1663

Job Template attributes (JT)	These Printer attributes are related directly to the “xxx” Job Template attributes that a client can supply in a Job Creation request as follows: 1. “xxx-supported” indicate the supported values 2. “xxx-default” indicate the values that will be used if the client and the PDL omit the attribute. 3. “xxx-ready” indicate the supported values that are available without human intervention, for those few attributes that require human intervention, such as “media” and possibly “finishing”.
Printer Description attributes (PD)	These Printer attributes describe the Printer, such as “printer-name” and “printer-location”. Some of them are “xxx-supported” and “xxx-default” for Operation attributes that the client can supply in a Job Creation request.
neither (-)	These Printer attributes describe supported and defaults for member attributes of collection Job Template attributes.

1664 In a Get-Printer-Attributes request, a client can request all of the Printer attributes in the Job Template (JT) or Printer  
 1665 Description (PD) groups by supplying the ‘job-template’ or ‘printer-description’ group name, respectively. The client  
 1666 can also request “all”. The column labels are:  
 1667

1668 **“Attribute Syntax”** - indicates the attribute syntax (see [RFC2911] section 4.1). Many “xxx-default” and “xxx-  
 1669 supported” attributes have the ‘collection’ syntax which consists of a number of member attributes.  
 1670 These member attributes are not listed in this table when they are the same as the corresponding  
 1671 “xxx” attribute in Table 6. Only those few Printer attribute collection attributes that do not have a  
 1672 corresponding Job Template attributes show the member attributes in this table.

1673 **“Grp”** - indicates to which group the attribute belongs.

1674 **“Printer Conf.”** - indicates the IPP/1.1 Printer conformance requirements for supporting the attribute. Those  
 1675 attributes labeled as “MAY” may have conditional requirements that require their support, if the  
 1676 Printer supports a related attribute, operation, or feature. For example, all Job Template attributes  
 1677 are OPTIONAL for a Printer to support. However, if a Printer supports Job Template attribute “xxx”,  
 1678 then it MUST also support the corresponding “xxx-default” and “xxx-supported” attributes. Similarly,  
 1679 if Event Notification is supported, then some of the attributes indicated as “MAY” in this table become  
 1680 MUST.

1681 **“Reference”** - lists the IETF or IEEE-ISTO specification which defines the semantics of the attribute.  
 1682

1683 **Table 10 - Printer attributes (Job Template and Printer Description)**

Printer attribute name (Job Template & Printer Description)	Attribute Syntax	Grp	Printer Conf.	Reference
<b>charset-configured</b>	charset	PD	MUST	[RFC2911] §4.4.17
<b>charset-supported</b>	1setOf charset	PD	MUST	[RFC2911] §4.4.18
<b>color-supported</b>	boolean	PD	MAY	[RFC2911] §4.4.26
<b>compression-supported</b>	type3 keyword	PD	MUST	[RFC2911] §4.4.32
<b>copies-default</b>	integer(1:MAX)	JT	MAY	[RFC2911] §4.2.5
<b>copies-supported</b>	rangeOfInteger(1:MAX)	JT	MAY	[RFC2911] §4.2.5

Printer attribute name (Job Template & Printer Description)	Attribute Syntax	Grp	Printer Conf.	Reference
<b>cover-back-default</b>	collection	JT	MAY	[prod-print] §3.1.3
<b>cover-back-supported</b>	1setOf type2 keyword	JT	MAY	[prod-print] §3.1.4
<b>cover-front-default</b>	collection	JT	MAY	[prod-print] §3.1.3
<b>cover-front-supported</b>	1setOf type2 keyword	JT	MAY	[prod-print] §3.1.4
<b>cover-type-supported</b>	1setOf type2 keyword	-	MAY	[prod-print] §3.1.2.1
<b>document-creation-attributes-supported</b>	1setOf type2 keyword	PD	MAY	[this-spec] §9.1
<b>document-format-default</b>	mimeMediaType	PD	MUST	[RFC2911] §4.4.21
<b>document-format-supported</b>	1setOf mimeMediaType	PD	MUST	[RFC2911] §4.4.22
<b>document-format-varying-attributes</b>	1setOf type2 keyword	PD	MAY	[set-ops] §6.3
<b>document-overrides-supported</b>	1setOf type2 keyword		MAY	[override] §5.1.14
<b>finishings-col-default</b>	collection	JT	MAY	[prod-print] §3.2.3
<b>finishings-col-ready</b>	1setOf collection	JT	MAY	[prod-print] §3.2.4
<b>finishings-col-supported</b>	1setOf type2 keyword	JT	MAY	[prod-print] §3.2.5
<b>finishings-default</b>	1setOf type2 enum	JT	MAY	[RFC2911] §4.2.6
<b>finishings-ready</b>	1setOf type2 enum	JT	MAY	[RFC2911] §4.2.6
<b>finishings-supported</b>	1setOf type2 enum	JT	MAY	[RFC2911] §4.2.6
<b>finishing-template-supported</b>	1setOf name(MAX)	-	MAY	[prod-print] §3.2.1.1
<b>force-front-side-default</b>	1setOf integer(1:MAX)	JT	MAY	[prod-print] §3.3
<b>force-front-side-supported</b>	rangeOfInteger(1:MAX)	JT	MAY	[prod-print] §3.3
<b>generated-natural-language-supported</b>	1setOf naturalLanguage	PD	MUST	[RFC2911] §4.4.20
<b>imposition-template-default</b>	type3 keyword   name(MAX)	-	MAY	[prod-print] §3.4
<b>imposition-template-supported</b>	1setOf (type3 keyword   name(MAX))	-	MAY	[prod-print] §3.4
<b>insert-after-page-number-supported</b>	rangeOfInteger(0:MAX)	-	MAY	[prod-print] §3.5.1.1
<b>insert-count-supported</b>	rangeOfInteger(0:MAX)	-	MAY	[prod-print] §3.5.2.1
<b>insert-sheet-default</b>	1setOf collection	JT	MAY	[prod-print] §3.5.4
<b>insert-sheet-supported</b>	1setOf type2 keyword	JT	MAY	[prod-print] §3.5.5
<b>ippget-event-life</b>	integer(15:MAX)	PD	MAY	[get-method] §8.1
<b>ipp-versions-supported</b>	1setOf type2 keyword	PD	MUST	[RFC2911] §4.4.20
<b>job-account-id-default</b>	name(MAX)	JT	MAY	[prod-print] §3.6
<b>job-account-id-supported</b>	boolean	JT	MAY	[prod-print] §3.6
<b>job-accounting-output-bin-default</b>	type3 keyword   name(MAX)	-	MAY	[prod-print] §3.8.3.1
<b>job-accounting-output-bin-supported</b>	1setOf (type3 keyword   name(MAX))	-	MAY	[prod-print] §3.8.3.2
<b>job-accounting-sheets-default</b>	collection	JT	MAY	[prod-print] §3.8.4
<b>job-accounting-sheets-supported</b>	1setOf type2 keyword	JT	MAY	[prod-print] §3.8.5
<b>job-accounting-sheets-type-supported</b>	1setOf (type3 keyword   name(MAX))	-	MAY	[prod-print] §3.8.1.1
<b>job-accounting-user-id-default</b>	name(MAX)	JT	MAY	[prod-print] §3.7
<b>job-accounting-user-id-supported</b>	boolean	JT	MAY	[prod-print] §3.7
<b>job-creation-attributes-supported</b>	1setOf type2 keyword	PD	MAY	[prod-print2] §7.1
<b>job-error-sheet-default</b>	collection	JT	MAY	[prod-print] §3.7
<b>job-error-sheet-supported</b>	1setOf type2 keyword	JT	MAY	[prod-print] §3.9.5
<b>job-error-sheet-type-supported</b>	1setOf (type3 keyword   name(MAX))	-	MAY	[prod-print] §3.9.1.1
<b>job-error-sheet-when-supported</b>	1setOf type2 keyword	-	MAY	[prod-print] §3.9.2.1
<b>job-hold-until-default</b>	type3 keyword   name(MAX)	JT	MAY	[RFC2911] §4.2.2
<b>job-hold-until-supported</b>	1setOf (type3 keyword	JT	MAY	[RFC2911] §4.2.2

Printer attribute name (Job Template & Printer Description)	Attribute Syntax	Grp	Printer Conf.	Reference
	name(MAX))			
<b>job-impressions-supported</b>	rangeOfInteger(0:MAX)	PD	MAY	[RFC2911] §4.4.34
<b>job-k-octets-supported</b>	rangeOfInteger(0:MAX)	PD	MAY	[RFC2911] §4.4.33
<b>job-media-sheets-supported</b>	rangeOfInteger(0:MAX)	PD	MAY	[RFC2911] §4.4.35
<b>job-message-to-operator-default</b>	text(MAX)	JT	MAY	[prod-print] §3.12
<b>job-message-to-operator-supported</b>	boolean	JT	MAY	[prod-print] §3.12
<b>job-password-supported</b>	integer(0:127)	PD	MAY	[prod-print2] §7.2
<b>job-password-encryption-supported</b>	1setOf (type3 keyword   name(MAX))	PD	MAY	[prod-print2] §7.3
<b>job-priority-default</b>	integer(1:100)	JT	MAY	[RFC2911] §4.2.1
<b>job-priority-supported</b>	1setOf integer(1:100)	JT	MAY	[RFC2911] §4.2.1
<b>job-settable-attributes-supported</b>	1setOf type2 keyword	PD	MAY	[set-ops] §6.2
<b>job-sheet-message-default</b>	text(MAX)		MAY	[prod-print] §3.12
<b>job-sheet-message-supported</b>	boolean		MAY	[prod-print] §3.12
<b>job-sheets-col-default</b>	collection	JT	MAY	[prod-print] §3.11.3
<b>job-sheets-col-supported</b>	1setOf type2 keyword	JT	MAY	[prod-print] §3.11.4
<b>job-sheets-default</b>	type3 keyword   name(MAX)	JT	MAY	[RFC2911] §4.2.3
<b>job-sheets-supported</b>	1setOf (type3 keyword   name(MAX))	JT	MAY	[RFC2911] §4.2.3
<b>job-spooling-supported</b>	type2 keyword	PD	MAY	[prod-print2] §7.4
<b>max-save-info-supported</b>	integer(1:MAX)	PD	MAY	[prod-print2] §7.5
<b>max-stitching-locations-supported</b>	<a href="#">integer(1:MAX)</a>	PD	MAY	[prod-print] §5.2
<b>media-back-coating-supported</b>	1setOf (type3 keyword   name(MAX))	-	MAY	[prod-print] §3.13.10.2
<b>media-col-database</b>	1setOf collection	- <sup>38</sup>	MAY	[prod-print2] §7.6
<i>any "media-col" member attribute</i>				
<b>media-col-default</b>	collection	JT	MAY	[prod-print] §3.13.12
<b>media-color-supported</b>	1setOf type2 keyword	-	MAY	[prod-print] §3.13.4.1
<b>media-col-ready</b>	1setOf collection	JT	MAY	[prod-print] §3.13.13
<b>media-col-supported</b>	1setOf type2 keyword	JT	MAY	[prod-print] §3.13.14
<b>media-default</b>	type3 keyword   name(MAX)	JT	MAY	[RFC2911] §4.2.11
<b>media-front-coating-supported</b>	1setOf (type3 keyword   name(MAX))	-	MAY	[prod-print] §3.13.10.1
<b>media-hole-count-supported</b>	1setOf rangeOfInteger(0:MAX)	-	MAY	[prod-print] §3.13.6.1
<b>media-info-supported</b>	boolean	-	MAY	[prod-print] §3.13.3.1
<b>media-input-tray-check-default</b>	type3 keyword   name(MAX)	JT	MAY	[prod-print] §3.14
<b>media-input-tray-check-supported</b>	1setOf (type3 keyword   name(MAX))	JT	MAY	[prod-print] §3.14
<b>media-key-supported</b>	1setOf (type3 keyword   name(MAX))	-	MAY	[prod-print] §3.13.1.1
<b>media-order-count-supported</b>	1setOf rangeOfInteger(1:MAX)	-	MAY	[prod-print] §3.13.7.1
<b>media-pre-printed-supported</b>	1setOf (type3 keyword   name(MAX))	-	MAY	[prod-print] §3.13.5.1
<b>media-ready</b>	1setOf (type3 keyword   name(MAX))	JT	MAY	[RFC2911] §4.2.11
<b>media-recycled-supported</b>	1setOf (type3 keyword	-	MAY	[prod-print] §3.13.11.1

<sup>38</sup> The "media-col-database" attribute is not returned when the client requests 'all' or 'printer-description' attribute group because there MAY be a large number of values. Instead the client MUST query "media-col-database" explicitly in a Get-Printer-Attributes request.

Printer attribute name (Job Template & Printer Description)	Attribute Syntax	Grp	Printer Conf.	Reference
	name(MAX))			
<b>media-size-supported</b>	1setOf collection	-	MAY	[prod-print] §3.13.8.3
<b>media-supported</b>	1setOf (type3 keyword   name(MAX))	JT	MAY	[RFC2911] §4.2.11
<b>media-type-supported</b>	1setOf (type3 keyword   name(MAX))	-	MAY	[prod-print] §3.13.2.1
<b>media-weight-metric-supported</b>	1setOf rangeOfInteger(1:MAX)	-	MAY	[prod-print] §3.13.9.1
<b>multiple-document-handling-default</b>	type2 keyword	JT	MAY	[RFC2911] §4.2.4
<b>multiple-document-handling-supported</b>	1setOf type2 keyword	JT	MAY	[RFC2911] §4.2.4
<b>multiple-document-jobs-supported</b>	boolean	PD	MAY	[RFC2911] §4.4.16
<b>multiple-operation-time-out</b>	integer(1:MAX)	PD	MAY	[RFC2911] §4.4.31
<b>natural-language-configured</b>	naturalLanguage	PD	MUST	[RFC2911] §4.4.19
<b>notify-attributes-supported</b>	1setOf type2 keyword	PD	MAY	[ntfy] §5.3.4
<b>notify-events-default</b>	1setOf type2 keyword	PD	MAY	[ntfy] §5.3.3
<b>notify-events-supported</b>	1setOf type2 keyword	PD	MAY	[ntfy] §5.3.3
<b>notify-lease-duration-default</b>	integer(0:67108863)	PD	MAY	[ntfy] §5.3.8
<b>notify-lease-duration-supported</b>	1setOf (integer(0: 67108863)   rangeOfInteger(0:67108863))	PD	MAY	[ntfy] §5.3.8
<b>notify-lease-expiration-time</b>	integer(0:MAX)	PD	MAY	[ntfy] §5.4.3
<b>notify-max-events-supported</b>	integer(2:MAX)	PD	MAY	[ntfy] §5.3.3
<b>notify-pull-method-supported</b>	1setOf type2 keyword	PD	MAY	[ntfy] §5.3.2
<b>notify-schemes-supported</b>	1setOf uriScheme	PD	MAY	[ntfy] §5.3.1
<b>number-up-default</b>	integer(1:MAX)	JT	MAY	[RFC2911] §4.2.9
<b>number-up-supported</b>	1setOf (integer(1:MAX)   rangeOfInteger(1:MAX))	JT	MAY	[RFC2911] §4.2.9
<b>operations-supported</b>	1setOf type2 enum	PD	MUST	[RFC2911] §4.4.15
<b>orientation-requested-default</b>	type2 enum	JT	MAY	[RFC2911] §4.2.10
<b>orientation-requested-supported</b>	1setOf type2 enum	JT	MAY	[RFC2911] §4.2.10
<b>output-bin-default</b>	type2 keyword   name(MAX)	JT	MAY	[output-bin] §2.1
<b>output-bin-supported</b>	1setOf (type2 keyword   name(MAX))	JT	MAY	[output-bin] §2.1
<b>page-delivery-default</b>	type2 keyword	JT	MAY	[prod-print] §3.15
<b>page-delivery-supported</b>	1setOf type2 keyword	JT	MAY	[prod-print] §3.15
<b>page-order-received-default</b>	type2 keyword	JT	MAY	[prod-print] §3.16
<b>page-order-received-supported</b>	1setOf type2 keyword	JT	MAY	[prod-print] §3.16
<b>page-overrides-supported</b>	1setOf type2 keyword	PD	MAY	[override] §5.2.9
<b>page-ranges-supported</b>	boolean	JT	MAY	[RFC2911] §4.2.7
<b>pages-per-minute</b>	integer(0:MAX)	PD	MAY	[RFC2911] §4.4.36
<b>pages-per-minute-color</b>	integer(0:MAX)	PD	MAY	[RFC2911] §4.4.37
<b>pages-per-subset-supported</b>	boolean	PD	MAY	[override] §5.3.2
<b>parent-printers-supported</b>	1setOf uri	PD	MAY	[adm-ops] §7.2
<b>pdl-override-supported</b>	type2 keyword	PD	MUST	[RFC2911] §4.4.28
<b>presentation-direction-number-up-default</b>	type2 keyword	JT	MAY	[prod-print] §3.17
<b>presentation-direction-number-up-supported</b>	1setOf type2 keyword	JT	MAY	[prod-print] §3.17
<b>printer-current-time</b>	dateTime	PD	MAY	[RFC2911] §4.4.30
<b>printer-detailed-status-messages</b>	1setOf text(MAX)	PD	MAY	[prod-print2] §7.7
<b>printer-driver-installer</b>	uri	PD	MAY	[RFC2911] §4.4.8

Printer attribute name (Job Template & Printer Description)	Attribute Syntax	Grp	Printer Conf.	Reference
<b>printer-info</b>	text(127)	PD	MAY	[RFC2911] §4.4.6
<b>printer-is-accepting-jobs</b>	boolean	PD	MUST	[RFC2911] §4.4.23
<b>printer-location</b>	text(127)	PD	MAY	[RFC2911] §4.4.5
<b>printer-make-and-model</b>	text(127)	PD	MAY	[RFC2911] §4.4.9
<b>printer-message-date-time</b>	dateTime	PD	MAY	[set-ops] §6.5
<b>printer-message-from-operator</b>	text(127)	PD	MAY	[RFC2911] §4.4.25
<b>printer-message-time</b>	integer(MIN:MAX)	PD	MAY	[set-ops] §6.4
<b>printer-more-info</b>	uri	PD	MAY	[RFC2911] §4.4.7
<b>printer-more-info-manufacturer</b>	uri	PD	MAY	[RFC2911] §4.4.10
<b>printer-name</b>	name(127)	PD	MUST	[RFC2911] §4.4.4
<b>printer-notify-server-uri</b>	uri	PD	MAY	[not-srv] §4.1
<b>printer-resolution-default</b>	resolution	JT	MAY	[RFC2911] §4.2.12
<b>printer-resolution-supported</b>	1setOf resolution	JT	MAY	[RFC2911] §4.2.12
<b>printer-settable-attributes-supported</b>	1setOf type2 keyword	PD	MAY	[set-ops] §6.1
<b>printer-state</b>	type1 enum	PD	MUST	[RFC2911] §4.4.11
<b>printer-state-change-date-time</b>	dateTime	PD	MAY	[ntfy] §6.2
<b>printer-state-change-time</b>	integer(1:MAX)	PD	MAY	[ntfy] §6.1
<b>printer-state-message</b>	text(MAX)	PD	MAY	[RFC2911] §4.4.13
<b>printer-state-reasons</b>	1setOf type2 keyword	PD	MUST	[RFC2911] §4.4.12
<b>printer-up-time</b>	integer(1:MAX))	PD	MUST	[RFC2911] §4.4.29
<b>printer-uri-supported</b>	1setOf uri	PD	MUST	[RFC2911] §4.4.1
<b>printer-xri-supported</b>	1setOf collection	PD	MAY	[set-ops] §6.6
<b>xri-uri</b>	uri	PD	MUST	[set-ops] §6.6
<b>xri-authentication</b>	1setOf type2 keyword	PD	MUST	[set-ops] §6.6
<b>xri-security</b>	1setOf type2 keyword	PD	MUST	[set-ops] §6.6
<b>print-quality-default</b>	type2 enum	JT	MAY	[RFC2911] §4.2.13
<b>print-quality-supported</b>	1setOf type2 enum	JT	MAY	[RFC2911] §4.2.13
<b>queued-job-count</b>	integer(0:MAX)	PD	MUST	[RFC2911] §4.4.24
<b>reference-uri-schemes-supported</b>	1setOf uriScheme	PD	MAY	[RFC2911] §4.4.27
<b>separator-sheets-default</b>	collection	JT	MAY	[prod-print] §3.18.3
<b>separator-sheets-supported</b>	1setOf type2 keyword	JT	MAY	[prod-print] §3.18.4
<b>separator-sheets-type-supported</b>	1setOf (type3 keyword   name(MAX))	-	MAY	[prod-print] §3.18.1.1
<b>sheet-collate-default</b>	type2 keyword	JT	MAY	[job-prog] §3.1
<b>sheet-collate-supported</b>	1setOf type2 keyword	JT	MAY	[job-prog] §3.1
<b>sides-default</b>	type2 keyword	JT	MAY	[RFC2911] §4.2.8
<b>sides-supported</b>	1setOf type2 keyword	JT	MAY	[RFC2911] §4.2.8
<b>stitching-locations-supported</b>	1setOf (integer(0:MAX)   rangeOfInteger(0:MAX))	-	MAY	[prod-print] §3.2.2.3.1
<b>stitching-offset-supported</b>	1setOf (integer (0:MAX)   rangeOfInteger(0:MAX))	-	MAY	[prod-print] §3.2.2.2.1
<b>stitching-reference-edge-supported</b>	1setOf type2 keyword		MAY	[prod-print] §3.2.2.1.1
<b>subordinate-printers-supported</b>	1setOf uri	PD	MAY	[adm-ops] §7.1
<b>uri-authentication-supported</b>	1setOf type2 keyword	PD	MUST	[RFC2911] §4.4.2
<b>uri-security-supported</b>	1setOf type2 keyword	PD	MUST	[RFC2911] §4.4.3
<b>user-defined-values-supported</b>	1setOf type2 keyword	PD	MAY	[prod-print] §5.1
<b>which-jobs-supported</b>	1setOf type2 keyword	PD	MAY	[prod-print2] §7.8
<b>x-image-position-default</b>	type2 keyword	JT	MAY	[prod-print] §3.19.2
<b>x-image-position-supported</b>	1setOf type2 keyword	JT	MAY	[prod-print] §3.19.2
<b>x-image-shift-default</b>	integer(MIN:MAX)	JT	MAY	[prod-print] §3.19.3

Printer attribute name (Job Template & Printer Description)	Attribute Syntax	Grp	Printer Conf.	Reference
<b>x-image-shift-supported</b>	rangeOfInteger(MIN:MAX)	JT	MAY	[prod-print] §3.19.3
<b>xri-authentication-supported</b>	1setOf type2 keyword	PD	MAY	[set-ops] §6.8
<b>xri-security-supported</b>	1setOf type2 keyword	PD	MAY	[set-ops] §6.9
<b>xri-uri-scheme-supported</b>	1setOf uriScheme	PD	MAY	[set-ops] §6.7
<b>x-side1-image-shift-default</b>	integer(MIN:MAX)	JT	MAY	[prod-print] §3.19.4
<b>x-side1-image-shift-supported</b>	rangeOfInteger(MIN:MAX)	JT	MAY	[prod-print] §3.19.4
<b>x-side2-image-shift-default</b>	integer(MIN:MAX)	JT	MAY	[prod-print] §3.19.5
<b>x-side2-image-shift-supported</b>	rangeOfInteger(MIN:MAX)	JT	MAY	[prod-print] §3.19.5
<b>y-image-position-default</b>	type2 keyword	JT	MAY	[prod-print] §3.19.6
<b>y-image-position-supported</b>	1setOf type2 keyword	JT	MAY	[prod-print] §3.19.6
<b>y-image-shift-default</b>	integer(MIN:MAX)	JT	MAY	[prod-print] §3.19.7
<b>y-image-shift-supported</b>	rangeOfInteger(MIN:MAX)	JT	MAY	[prod-print] §3.19.7
<b>y-side1-image-shift-default</b>	integer(MIN:MAX)	JT	MAY	[prod-print] §3.19.8
<b>y-side1-image-shift-supported</b>	rangeOfInteger(MIN:MAX)	JT	MAY	[prod-print] §3.19.8
<b>y-side2-image-shift-default</b>	integer(MIN:MAX)	JT	MAY	[prod-print] §3.19.9
<b>y-side2-image-shift-supported</b>	rangeOfInteger(MIN:MAX)	JT	MAY	[prod-print] §3.19.9

1684

## 1685 9.1 document-creation-attributes-supported (1setOf type2 keyword)

1686 This Printer Description attribute lists the keyword names of the Document Template and Operation attributes that  
1687 the Printer will accept in the Create-Document, Send-Document, and Send-URI Document Creation operations.

## 1688 9.2 printer-state-reasons (1setOf type2 keyword)

IPP Printer Description attribute name	IPP Attribute Syntax plus Values	Printer conformance	Reference
<b>printer-state-reasons</b>	1setOf type2 keyword	MUST	[RFC2911] §4.4.12
	other	MAY	[RFC2911] §4.4.12
	none	MUST	[RFC2911] §4.4.12
	connecting-to-device	MAY	[RFC2911] §4.4.12
	cover-open	MAY	[RFC2911] §4.4.12
	deactivated	MAY	[adm-ops] §8.2
	developer-empty	MAY	[RFC2911] §4.4.12
	developer-low	MAY	[RFC2911] §4.4.12
	door-open	MAY	[RFC2911] §4.4.12
	fuser-over-temp	MAY	[RFC2911] §4.4.12
	fuser-under-temp	MAY	[RFC2911] §4.4.12
	hold-new-jobs	MAY	[adm-ops] §8.1
	input-tray-missing	MAY	[RFC2911] §4.4.12
	interlock-open	MAY	[RFC2911] §4.4.12
	interpreter-resource-unavailable	MAY	[RFC2911] §4.4.12
	marker-supply-empty	MAY	[RFC2911] §4.4.12
	marker-supply-low	MAY	[RFC2911] §4.4.12
	marker-waste-almost-full	MAY	[RFC2911] §4.4.12
	marker-waste-full	MAY	[RFC2911] §4.4.12
	media-empty	MAY	[RFC2911] §4.4.12

IPP Printer Description attribute name	IPP Attribute Syntax plus Values	Printer conformance	Reference
	media-jam	MAY	[RFC2911] §4.4.12
	media-low	MAY	[RFC2911] §4.4.12
	media-needed	MAY	[RFC2911] §4.4.12
	moving-to-paused	CMUST <sup>39</sup>	[RFC2911] §4.4.12
	opc-life-over	MAY	[RFC2911] §4.4.12
	opc-near-eol	MAY	[RFC2911] §4.4.12
	output-area-almost-full	MAY	[RFC2911] §4.4.12
	output-area-full	MAY	[RFC2911] §4.4.12
	output-tray-missing	MAY	[RFC2911] §4.4.12
	paused	CMUST <sup>40</sup>	[RFC2911] §4.4.12
	shutdown	MAY	[RFC2911] §4.4.12
	spool-area-full	SHOULD	[RFC2911] §4.4.12
	stopped-partly	MAY	[RFC2911] §4.4.12
	stopping	MAY	[RFC2911] §4.4.12
	timed-out	MAY	[RFC2911] §4.4.12
	toner-empty	MAY	[RFC2911] §4.4.12
	toner-low	MAY	[RFC2911] §4.4.12

1689

1690 This description is taken from [RFC2911] with additions from other IPP extension documents:

1691 This REQUIRED Printer attribute supplies additional detail about the device's state. Some of these value  
1692 definitions indicate conformance requirements; the rest are OPTIONAL.

1693 Each keyword value MAY have a suffix to indicate its level of severity. The three levels are: report (least severe),  
1694 warning, and error (most severe).

1695 **'-report'**: This suffix indicates that the reason is a "report". An implementation may choose to omit some or  
1696 all reports. Some reports specify finer granularity about the printer state; others serve as a precursor  
1697 to a warning. A report MUST contain nothing that could affect the printed output.

1698 **'-warning'**: This suffix indicates that the reason is a "warning". An implementation may choose to omit some  
1699 or all warnings. Warnings serve as a precursor to an error. A warning MUST contain nothing that  
1700 prevents a job from completing, though in some cases the output may be of lower quality.

1701 **'-error'**: This suffix indicates that the reason is an "error". An implementation MUST include all errors. If this  
1702 attribute contains one or more errors, printer MUST be in the stopped state.

1703 If the implementation does not add any one of the three suffixes, all parties MUST assume that the reason is an  
1704 "error".

1705 If a Printer object controls more than one output device, each value of this attribute MAY apply to one or more of the  
1706 output devices. An error on one output device that does not stop the Printer object as a whole MAY appear as a  
1707 warning in the Printer's "printer-state-reasons attribute". If the "printer-state" for such a Printer has a value of  
1708 'stopped', then there MUST be an error reason among the values in the "printer-state-reasons" attribute.

1709 The following standard keyword values are defined (in alphabetical order):

<sup>39</sup> The 'moving-to-paused' value MUST be supported if the Pause-Printer operation is supported and it takes significant time to move to paused.

<sup>40</sup> The 'paused' value MUST be supported if the Pause-Printer operation is supported.



- 1710 **'other'**: The device has detected an error other than one listed in this document.
- 1711 **'none'**: There are not reasons. This state reason is semantically equivalent to "printer-state-reasons" without  
1712 any value and MUST be used, since the 1setOf attribute syntax requires at least one value.
- 1713 **'connecting-to-device'**: The Printer object has scheduled a job on the output device and is in the process of  
1714 connecting to a shared network output device (and might not be able to actually start printing the job  
1715 for an arbitrarily long time depending on the usage of the output device by other servers on the  
1716 network).
- 1717 **'cover-open'**: One or more covers on the device are open.
- 1718 **'deactivated'**: A client has issued a Deactivate-Printer operation for the Printer object (see [adm-ops]  
1719 section 3.4.1) and the Printer is in the process of becoming deactivated or has become deactivated.  
1720 The Printer MUST reject all requests except Activate-Printer, queries (Get-Printer-Attributes, Get-  
1721 Job-Attributes, Get-Jobs, etc.), Send-Document, and Send-URI (so that partial job submission can  
1722 be completed - see [adm-ops] section 3.1.1) and return the 'server-error-service-unavailable' status  
1723 code.
- 1724 **'developer-empty'**: The device is out of developer.
- 1725 **'developer-low'**: The device is low on developer.
- 1726 **'door-open'**: One or more doors on the device are open.
- 1727 **'fuser-over-temp'**: The fuser temperature is above normal.
- 1728 **'fuser-under-temp'**: The fuser temperature is below normal.
- 1729 **'hold-new-jobs'**: The operator has issued the Hold-New-Jobs operation (see [adm-ops] section 3.3.1) or  
1730 other means, but the output-device(s) are taking an appreciable time to stop. Later, when all output  
1731 has stopped, the "printer-state" becomes 'stopped', and the 'paused' value replaces the 'moving-to-  
1732 paused' value in the "printer-state-reasons" attribute. This value MUST be supported, if the Hold-  
1733 New-Jobs operation is supported and the implementation takes significant time to pause a device in  
1734 certain circumstances.
- 1735 **'input-tray-missing'**: One or more input trays are not in the device.
- 1736 **'interlock-open'**: One or more interlock devices on the printer are unlocked.
- 1737 **'interpreter-resource-unavailable'**: An interpreter resource is unavailable (i.e. font, form)
- 1738 **'marker-supply-empty'**: The device is out of at least one marker supply. (e.g. toner, ink, ribbon)
- 1739 **'marker-supply-low'**: The device is low on at least one marker supply. (e.g. toner, ink, ribbon)
- 1740 **'marker-waste-almost-full'**: The device marker supply waste receptacle is almost full.
- 1741 **'marker-waste-full'**: The device marker supply waste receptacle is full.
- 1742 **'media-empty'**: At least one input tray is empty.
- 1743 **'media-jam'**: The device has a media jam.
- 1744 **'media-low'**: At least one input tray is low on media.
- 1745 **'media-needed'**: A tray has run out of media.
- 1746 **'moving-to-paused'**: Someone has paused the Printer object using the Pause-Printer operation (see  
1747 [RFC2911] section 3.2.7) or other means, but the device(s) are taking an appreciable time to stop.  
1748 Later, when all output has stopped, the "printer-state" becomes 'stopped', and the 'paused' value  
1749 replaces the 'moving-to-paused' value in the "printer-state-reasons" attribute. This value MUST be  
1750 supported, if the Pause-Printer operation is supported and the implementation takes significant time  
1751 to pause a device in certain circumstances.
- 1752 **'opc-life-over'**: The optical photo conductor is no longer functioning.

- 1753 **'opc-near-eol'**: The optical photo conductor is near end of life.
- 1754 **'output-area-almost-full'**: One or more output area is almost full (e.g. tray, stacker, collator).
- 1755 **'output-area-full'**: One or more output area is full. (e.g. tray, stacker, collator)
- 1756 **'output-tray-missing'**: One or more output trays are not in the device
- 1757 **'paused'**: Someone has paused the Printer object using the Pause-Printer operation (see [RFC2911] section  
1758 3.2.7) or other means and the Printer object's "printer-state" is 'stopped'. In this state, a Printer  
1759 MUST NOT produce printed output, but it MUST perform other operations requested by a client. If a  
1760 Printer had been printing a job when the Printer was paused, the Printer MUST resume printing that  
1761 job when the Printer is no longer paused and leave no evidence in the printed output of such a  
1762 pause. This value MUST be supported, if the Pause-Printer operation is supported.
- 1763 **'shutdown'**: Someone has removed a Printer object from service, and the device may be powered down or  
1764 physically removed. In this state, a Printer object MUST NOT produce printed output, and unless the  
1765 Printer object is realized by a print server that is still active, the Printer object MUST perform no other  
1766 operations requested by a client, including returning this value. If a Printer object had been printing a  
1767 job when it was shutdown, the Printer NEED NOT resume printing that job when the Printer is no  
1768 longer shutdown. If the Printer resumes printing such a job, it may leave evidence in the printed  
1769 output of such a shutdown, e.g. the part printed before the shutdown may be printed a second time  
1770 after the shutdown.
- 1771 **'spool-area-full'**: The limit of persistent storage allocated for spooling has been reached. The Printer is  
1772 temporarily unable to accept more jobs. The Printer will remove this value when it is able to accept  
1773 more jobs. This value SHOULD be used by a non-spooling Printer that only accepts one or a small  
1774 number jobs at a time or a spooling Printer that has filled the spool space.
- 1775 **'stopped-partly'**: When a Printer object controls more than one output device, this reason indicates that one  
1776 or more output devices are stopped. If the reason is a report, fewer than half of the output devices  
1777 are stopped. If the reason is a warning, fewer than all of the output devices are stopped.
- 1778 **'stopping'**: The Printer object is in the process of stopping the device and will be stopped in a while. When  
1779 the device is stopped, the Printer object will change the Printer object's state to 'stopped'. The  
1780 'stopping-warning' reason is never an error, even for a Printer with a single output device. When an  
1781 output-device ceases accepting jobs, the Printer will have this reason while the output device  
1782 completes printing.
- 1783 **'timed-out'**: The server was able to connect to the output device (or is always connected), but was unable to  
1784 get a response from the output device.
- 1785 **'toner-empty'**: The device is out of toner.
- 1786 **'toner-low'**: The device is low on toner.

## 1787 **10 New Values for Existing Printer Description Attributes**

1788 This section contains those attributes for which additional values are added.

### 1789 **10.1 operations-supported (1setOf type2 enum)**

1790 The following "operation-id" values are added in order to support the new operations defined in this document:

1791

**Table 11 – Operation-id assignments**

Value	Operation Name	Reference
0x0032	Cancel-Current-Document	[this-doc] §3.9
0x0033	Cancel-Document	[this-doc] §3.8
0x0034	Get-Document-Attributes	[this-doc] §3.5
0x0035	Get-Documents	[this-doc] §3.6
0x0036	Delete-Document	[this-doc] §3.10
0x0037	Set-Document-Attributes	[this-doc] §3.7
0x0038	Validate-Document	[this-doc] §3.11
0x0039	Create-Document	[this-doc] §3.1
0x003A	Send-Data	[this-doc] §3.2

1792

## 11 Conformance Requirements

1793

This section specifies the conformance requirements for Printers and clients.

1794

### 11.1 Printer conformance requirements

1795

In order to conform to this specification, a Printer:

1796

1. MUST meet the conformance requirements for Printers specified in [RFC2911].

1797

2. MUST support the Document operations that section 3 REQUIRES a Printer to support.

1798

3. MUST support the operation attributes in the Send-Document operation and, if supported, the Send-URI operation that section 6 REQUIRES a Printer to support.

1799

1800

4. MAY support any of the Document Template attributes in Document Creation operations as indicated in section 7 and MUST NOT support them for contexts for where they are not defined as indicated in the Table 7 with an “n”.

1801

1802

1803

5. MUST support the Document Description attributes that section 8 REQUIRES a Printer to support.

1804

6. MUST support the Printer attributes that section 9 REQUIRES a Printer to support.

1805

7. MUST support the values of Printer Descriptions attribute that section 10 REQUIRES a Printer to support.

1806

### 11.2 Client conformance requirements

1807

In order to conform to this specification, a client:

1808

1. MUST meet the conformance requirements for clients specified in [RFC2911]

1809

2. MAY support any of the Document operations defined in section 3. **ISSUE 18: Or should the client be REQUIRED to support some of the Document operations?**

1810

1811

3. MUST supply the operation attributes that section 6 REQUIRES a client to supply in operation requests.

- 1812 4. MUST supply any Document Template attributes in the format that section 7 REQUIRES a client to supply in  
1813 Document Creation operations and MUST NOT support them for contexts for where they are not defined as  
1814 indicated in the Table 7 with an "n".
- 1815 5. SHOULD support any of the Document Description attributes that section 8 REQUIRES a Printer to support.
- 1816 6. MAY support any of the Printer attributes listed in section 9.
- 1817 7. MAY support any of the values of the Printer Descriptions attributes in section 10.

## 1818 12 Normative References

1819 Note: The references in the body of this IEEE-ISTO document use the more reader-friendly mnemonic symbols  
1820 below, rather than the RFC number (except for [RFC2910] and [RFC2911]). IETF RFCs and IANA registrations  
1821 require using the RFC numbers in the body of the document for references.

1822 [adm-ops]

1823 Kugler, C, Hastings, T., Lewis, H., "Internet Printing Protocol (IPP): Job and Printer Administrative  
1824 Operations", <draft-ietf-ipp-ops-set2-03.txt>, July 17, 2001.

1825 [coll]

1826 deBry, R., Hastings, T., Herriot, R., Ocke, K., and P. Zehler, "Internet Printing Protocol (IPP): The 'collection'  
1827 attribute syntax", <draft-ietf-ipp-collection-05.txt>, work in progress, July 17, 2001.

1828 [finish]

1829 Hastings, T., Fullman, D., "Internet Printing Protocol (IPP): "finishings" attribute values extension", IEEE-  
1830 ISTO 5100.1-2001, February 5, 2001, <ftp://ftp.pwg.org/pub/pwg/standards/pwg5100.1.pdf>

1831 [get-method]

1832 Herriot, R., and T. Hastings, "Internet Printing Protocol (IPP): The 'ippget' Delivery Method for Event  
1833 Notifications", <draft-ietf-ipp-notify-get-08.txt>, September 5, 2002.

1834 [job-prog]

1835 Hastings, T., Lewis, H., and R. Bergman, "Internet Printing Protocol (IPP): Job Progress Attributes",  
1836 RFC3381, September 2002.

1837 [not-srv]

1838 Hastings, T., Lewis, H, and Ira McDonald, "Distributed Notification Server", September 26, 2002, work in  
1839 progress to become IEEE-ISTO 5100.6-2002, [ftp://ftp.pwg.org/pub/pwg/ipp/new\\_NOT/ipp-dist-not-service-](ftp://ftp.pwg.org/pub/pwg/ipp/new_NOT/ipp-dist-not-service-020926.doc)  
1840 020926.doc

1841 [ntfy]

1842 Herriot, R., Hastings, T., Shepherd, M., deBry, R., Isaacson, S., Martin, J., and R. Bergman, "Internet  
1843 Printing Protocol/1.1: Event Notifications and Subscriptions", <draft-ietf-ipp-not-spec-08.txt>, November 19,  
1844 2001.

- 1845 [output-bin]  
1846 Hastings, T., and R. Bergman, "Internet Printing Protocol (IPP): output-bin attribute extension", IEEE-ISTO  
1847 5100.2-2001, February 7, 2001, <ftp://ftp.pwg.org/pub/pwg/standards/pwg5100.2.pdf>.
- 1848 [override]  
1849 Herriot, R., Ocke, K., "Internet Printing Protocol (IPP): Override Attributes for Documents and Pages", IEEE-  
1850 ISTO 5100.4-2001, February 7, 2001, <ftp://ftp.pwg.org/pub/pwg/standards/pwg5100.4.pdf>.
- 1851 [prod-print]  
1852 Ocke, K., Hastings, T., "Internet Printing Protocol (IPP): Production Printing Attributes - Set1", IEEE-ISTO  
1853 5100.3-2001, February 12, 2001, <ftp://ftp.pwg.org/pub/pwg/standards/pwg5100.3.pdf>.
- 1854 [prod-print2] Hastings, T., and D. Fullman, "Internet Printing Protocol (IPP): Production Printing Attributes - Set 2", to  
1855 become a PWG IEEE-ISTO standard, work in progress, August 21, 2002,  
1856 [ftp://ftp.pwg.org/pub/pwg/ipp/new\\_PPE/pwg-ipp-prod-print-set2-draft-v0\\_1-020821.pdf](ftp://ftp.pwg.org/pub/pwg/ipp/new_PPE/pwg-ipp-prod-print-set2-draft-v0_1-020821.pdf).
- 1857 [RFC2911]  
1858 R. deBry, T. Hastings, R. Herriot, S. Isaacson, P. Powell, "Internet Printing Protocol/1.1: Model and  
1859 Semantics", RFC 2911, September 2000.
- 1860 [set-ops]  
1861 Hastings, T., Herriot, R., Kugler, C., and H. Lewis, "Internet Printing Protocol (IPP): Job and Printer Set  
1862 Operations", RFC 3380, September 2002.

## 1863 **13 Informative References**

- 1864 [fsg-jt]  
1865 Free Software Group, Open Printing Job Ticket API, Visit: <http://www.freestandards.org/openprinting/>
- 1866 [pwg-psi]  
1867 "Print Service Interface (PSI)", work in progress to become a PWG IEEE-ISTO standard. Visit  
1868 <http://www.pwg.org/>.
- 1869 [pwg-sm]  
1870 Zehler, P., and S. Albright, "PWG Semantic Model", work in progress to become a PWG IEEE-ISTO  
1871 standard, version 0.11, September 27, 2002. [ftp://ftp.pwg.org/pub/pwg/Semantic-Model/PWG-Semantic-](ftp://ftp.pwg.org/pub/pwg/Semantic-Model/PWG-Semantic-Model.pdf)  
1872 [Model.pdf](ftp://ftp.pwg.org/pub/pwg/Semantic-Model/PWG-Semantic-Model.pdf)
- 1873 [RFC2565]  
1874 Herriot, R., Butler, S., Moore, P., and R. Turner, "Internet Printing Protocol/1.0: Encoding and Transport",  
1875 RFC 2565, April 1999.
- 1876 [RFC2566]  
1877 R. deBry, T. Hastings, R. Herriot, S. Isaacson, and P. Powell, "Internet Printing Protocol/1.0: Model and  
1878 Semantics", RFC 2566, April 1999.
- 1879 [RFC2567]  
1880 Wright, D., "Design Goals for an Internet Printing Protocol", RFC 2567, April 1999.

- 1881 [RFC2568]  
 1882 Zilles, S., "Rationale for the Structure and Model and Protocol for the Internet Printing Protocol", RFC 2568,  
 1883 April 1999.
- 1884 [RFC2569]  
 1885 Herriot, R., Hastings, T., Jacobs, N., Martin, J., "Mapping between LPD and IPP Protocols", RFC 2569, April  
 1886 1999.
- 1887 [RFC2616]  
 1888 R. Fielding, J. Gettys, J. Mogul, H. Frystyk, L. Masinter, P. Leach, T. Berners-Lee, "Hypertext Transfer  
 1889 Protocol - HTTP/1.1", RFC 2616, June 1999.
- 1890 [RFC3196]  
 1891 Hastings, T., Manros, C., Zehler, P., Kugler, C., and H. Holst, "Internet Printing Protocol/1.1: Implementer's  
 1892 Guide", RFC 3196, November 2001.
- 1893 [RFC3239]  
 1894 Kugler, C., Lewis, H. and T. Hastings, "Internet Printing Protocol (IPP): Requirements for Job, Printer, and  
 1895 Device Administrative Operations", RFC 3239, February 2002.

## 1896 14 IANA Considerations

1897 This section contains the registration information for IANA to add to the various IPP Registries according to the  
 1898 procedures defined in RFC 2911 [RFC2911] section 6 to cover the definitions in this document.

1899 *Note Replace the References below with the RFC number for the appropriate document, so that it accurately*  
 1900 *reflects the content of the information for the IANA Registry.*

### 1901 14.1 Attribute Registrations

1902 The following table lists all the attributes defined in this document. These are to be registered according to the  
 1903 procedures in RFC 2911 [RFC2911] section 6.2.

1904  
 1905 Document Description attributes:

1906 Document Description attributes:	Reference:	Section
1907 attributes-charset (charset)	[RFC2911]	4.3.19
1908 attributes-natural-language (naturalLanguage)	[RFC2911]	4.3.20
1909 compression (type3 keyword)	[RFC2911]	3.2.1.1
1910 current-page-order (type2 keyword)	[prod-print]	4.1
1911 date-time-at-completed (dateTime)	[RFC2911]	4.3.14.7
1912 date-time-at-creation (dateTime)	[RFC2911]	4.3.14.5
1913 date-time-at-processing (dateTime)	[RFC2911]	4.3.14.6
1914 detailed-status-message (1setOf text (MAX))	[RFC2911]	4.3.10
1915 document-access-errors (1setOf text (MAX))	[RFC2911]	4.3.11
1916 document-format (documentFormat)	[RFC2911]	3.2.1.1
1917 document-name (name (MAX))	[RFC2911]	3.2.1.1
1918 document-natural-language (naturalLanguage)	[RFC2911]	3.2.1.1
1919 document-number (integer(0:MAX))	[this spec]	8.1

1920	document-state (type1 enum)	[this spec]	8.3
1921	document-state-reasons (lsetOf type2 keyword)	[this spec]	8.5!
1922	impressions (integer(0:MAX))	[RFC2911]	4.3.17.2
1923	impressions-completed (integer(0:MAX))	[RFC2911]	4.3.18.2
1924	impressions-completed-current-copy	[job-prog]	4.4
1925	(integer(0:MAX))		
1926	k-octets (integer(0:MAX))	[RFC2911]	4.3.17.1
1927	k-octets-processed (integer(0:MAX))	[RFC2911]	4.3.18.1
1928	last-document (boolean)	[RFC2911]	4.3.12
1929	media-sheets (integer(0:MAX))	[RFC2911]	4.3.17.3
1930	media-sheets-completed (integer(0:MAX))	[RFC2911]	4.3.18.3
1931	more-info (uri)	[RFC2911]	4.3.4
1932	printer-up-time (integer (1:MAX))	[RFC2911]	4.3.14.4
1933	sheet-completed-copy-number (integer(0:MAX))	[job-prog]	4.2
1934	time-at-completed (integer (MIN:MAX))	[RFC2911]	4.3.14.3
1935	time-at-creation (integer (MIN:MAX))	[RFC2911]	4.3.14.1
1936	time-at-processing (integer (MIN:MAX))	[RFC2911]	4.3.14.2
1937	warnings-count (integer(0:MAX))	[override]	6.1
1938			
1939			
1940	Document Templates attributes:	Reference:	Section:
1941	copies (integer(1:MAX))	[RFC2911]	4.2.5
1942	cover-back (collection)	[prod-print]	3.1
1943	media (type3 keyword   name(MAX))	[prod-print]	3.1.1
1944	media-col (collection)	[prod-print]	3.1.1
1945	cover-front (collection)	[prod-print]	3.1
1946	cover-type (type2 keyword)	[prod-print]	3.1.2
1947	media (type3 keyword   name(MAX))	[prod-print]	3.1.1
1948	media-col (collection)	[prod-print]	3.1.1
1949	cover-type (type2 keyword)	[prod-print]	3.1.2
1950	finishings (lsetOf type2 enum)	[RFC2911]	4.2.6
1951		[finish]	2
1952	finishings-col (collection)	[prod-print]	3.2
1953	finishing-template (name(MAX))	[prod-print]	3.2.1
1954	stitching (collection)	[prod-print]	3.2.2
1955	stitching-locations (lsetOf integer(0:MAX))	[prod-print]	3.2.2.3
1956	stitching-offset (integer (0:MAX))	[prod-print]	3.2.2.2
1957	stitching-reference-edge (type2 keyword)	[prod-print]	3.2.2.1
1958	force-front-side (lsetOf integer(1:MAX))	[prod-print]	3.3
1959	imposition-template (type2 keyword   name(MAX))	[prod-print]	3.4
1960	insert-sheet (lsetOf collection)	[prod-print]	3.5
1961	insert-after-page-number (integer(0:MAX))	[prod-print]	3.5.1
1962	insert-count (integer(0:MAX))	[prod-print]	3.5.2
1963	media (type3 keyword   name(MAX))	[prod-print]	3.5.3
1964	media-col (collection)	[prod-print]	3.5.3
1965	media (type3 keyword   name(MAX))	[RFC2911]	4.2.11

1966	media-col (collection)	[prod-print]	3.13
1967	media-back-coating (type3 keyword	[prod-print]	3.13.10
1968	name(MAX))		
1969	media-color (type3 keyword   name(MAX))	[prod-print]	3.13.4
1970	media-front-coating (type3 keyword	[prod-print]	3.13.10
1971	name(MAX))		
1972	media-hole-count (integer(0:MAX))	[prod-print]	3.13.6
1973	media-info (text(255))	[prod-print]	3.13.3
1974	media-key (type3 keyword   name(MAX))	[prod-print]	3.13.1
1975	media-order-count (integer(1:MAX))	[prod-print]	3.13.7
1976	media-preprinted (type3 keyword   name(MAX))	[prod-print]	3.13.5
1977	media-recycled (type3 keyword   name(MAX))	[prod-print]	3.13.11
1978	media-size (collection)	[prod-print]	3.13.8
1979	x-dimension (integer(0:MAX))	[prod-print]	3.13.8.1
1980	y-dimension (integer(0:MAX))	[prod-print]	3.13.8.2
1981	media-type (type3 keyword   name(MAX))	[prod-print]	3.13.2
1982	media-weight-metric (integer(0:MAX))	[prod-print]	3.13.9
1983	media-input-tray-check (type3 keyword	[prod-print]	3.14
1984	name(MAX))		
1985	number-up (integer(1:MAX))	[RFC2911]	4.2.9
1986	orientation-requested (type2 enum)	[RFC2911]	4.2.10
1987	output-bin (type2 keyword   name(MAX))	[output-bin]	2.1
1988	page-delivery (type2 keyword)	[prod-print]	3.15
1989	page-order-received (type2 keyword)	[prod-print]	3.16
1990	page-overrides (1setOf collection)	[override]	5.2
1991	document-copies (1setOf rangeOfInteger(MAX))	[override]	5.2.3
1992	input-documents (1setOf rangeOfInteger(MAX))	[override]	5.2.1
1993	output-documents (1setOf rangeOfInteger(MAX))	[override]	5.2.2
1994	pages (1setOf rangeOfInteger(MAX))	[override]	5.2.4
1995	<any other Job Template attributes that		
1996	affect pages, such as media or media-col (		
1997	page-ranges (1setOf rangeOfInteger(1:MAX))	[RFC2911]	4.2.7
1998	pages-per-subset (1setOf integer(1:MAX))	[prod-print]	5.3
1999	presentation-direction-number-up (type2	[prod-print]	3.17
2000	keyword)		
2001	print-quality (type2 enum)	[RFC2911]	4.2.13
2002	printer-resolution (resolution)	[RFC2911]	4.2.12
2003	separator-sheets (collection)	[prod-print]	3.18
2004	media (type3 keyword   name(MAX))	[prod-print]	3.18.2
2005	media-col (collection)	[prod-print]	3.18.2
2006	separator-sheets-type (type3 keyword	[prod-print]	3.18.1
2007	name(MAX))		
2008	sheet-collate (type2 keyword)	[job-prog]	3.1
2009	sides (type2 keyword)	[RFC2911]	4.2.8
2010	x-image-position (type2 keyword)	[prod-print]	3.19.2
2011	x-image-shift (integer(MIN:MAX))	[prod-print]	3.19.3



2012	x-side1-image-shift (integer(MIN:MAX))	[prod-print]	3.19.4
2013	x-side2-image-shift (integer(MIN:MAX))	[prod-print]	3.19.5
2014	y-image-position (type2 keyword)	[prod-print]	3.19.6
2015	y-image-shift (integer(MIN:MAX))	[prod-print]	3.19.7
2016	y-side1-image-shift (integer(MIN:MAX))	[prod-print]	3.19.8
2017	y-side2-image-shift (integer(MIN:MAX))	[prod-print]	3.19.9
2018			
2019			
2020	Operation attributes:		
2021	document-number	[this spec]	3
2022			

2023 **14.2 Additional Enum Attribute Value Registrations for the “operations-supported”**  
 2024 **Printer Attribute**

2025 The following table lists all the new enum attribute values defined in this document as additional type2 enum values  
 2026 for use with the “operations-supported” Printer Description attribute. These are to be registered according to the  
 2027 procedures in RFC 2911 [RFC2911] section 6.1.

2029	Value	Name	Reference	Section:
2030	-----	-----	-----	-----
2031	operations-supported (type2 enum):			
2032	0x0032	Cancel-Current-Document	[this-spec]	§3.9
2033	0x0033	Cancel-Document	[this-spec]	§3.8
2034	0x0034	Get-Document-Attributes	[this-spec]	§3.5
2035	0x0035	Get-Documents	[this-spec]	§3.6
2036	0x0036	Delete-Document	[this-spec]	§3.10
2037	0x0037	Set-Document-Attributes	[this-spec]	§3.7
2038	0x0038	Validate-Document	[this-spec]	§3.11
2039	0x0039	Create-Document	[this-spec]	§3.1
2040	0x003A	Send-Data	[this-spec]	§3.1

2042 The resulting enum attribute value registrations will be published in the  
 2043 <http://www.iana.org/assignments/ipp-registrations> registry.  
 2044

2045 **14.3 Operation Registrations**

2046 The following table lists all of the operations defined in this document. These are to be registered according to the  
 2047 procedures in RFC 2911 [RFC2911] section 6.4.

2049	Operations:	Reference:	Section:
2050	Cancel-Current-Document	[this-spec]	§3
2051	Cancel-Document	[this-spec]	§3
2052	Get-Document-Attributes	[this-spec]	§3
2053	Get-Documents	[this-spec]	§3
2054	Delete-Document	[this-spec]	§3
2055	Set-Document-Attributes	[this-spec]	§3

2056	Validate-Document	[this-spec]	§3
2057	Create-Document	[this-spec]	§
2058	Send-Data	[this-spec]	§
2059			

## 2060 **15 Internationalization Considerations**

2061 The internationalization considerations for this extension for handling the Document object are the same as for  
2062 handling the Job object in [RFC2911].

## 2063 **16 Security Considerations**

2064 The Document object should provide no more increased security considerations than the Job object. The Printer  
2065 MUST provide the same access control for Document objects as for Job objects.

## 2066 **17 Contributors**

## 2067 **18 Acknowledgments**

## 2068 **19 Author's Address**

2069 Tom Hastings  
2070 Xerox Corporation  
2071 737 Hawaii St.  
2072 El Segundo, CA 90245  
2073  
2074 Phone: 310 333-6413  
2075 Fax: 310 333-5514  
2076 e-mail: [hastings@cp10.es.xerox.com](mailto:hastings@cp10.es.xerox.com)  
2077

2078 Peter Zehler  
2079 Xerox Corporation  
2080 MS: 0128-30E  
2081 800 Phillips Road  
2082 Webster, NY 14580-9701  
2083

2084 Phone: 1+585+2658755  
2085 Fax:  
2086 e-mail: [PZehler@crt.xerox.com](mailto:PZehler@crt.xerox.com)  
2087

2088 Additional contributors:

2089  
2090 Don Fullman, Xerox  
2091 Ira McDonald, High North

2092 **20 Appendix A: Document operations compared to Job operations**

2093 This appendix compares the Document operations with the existing Job operations to show the parallelism.

2094 Table 12 compares the Job and Document operations. The two Conf. columns indicate the conformance  
 2095 requirements (REQUIRED = REQ, OPTIONAL = OPT) for the Job and Document operations respectively. A "REQ"  
 2096 in the Document Conformance column means if the Document object is supported. Whether a Document operation  
 2097 is a method on the Job object or the Document object depends on the modeling regime and is not an essential part  
 2098 of the semantics described here, since these semantics are intended to apply to both to object-oriented and object-  
 2099 based protocols, APIs, and implementations.

2100 **Table 12 - Document operations compared to Job operations**

Job operations	Job Conf.	Document operations	Doc Conf
<b>Cancel-Current-Job</b>	OPT	<b>Cancel-Current-Document</b>	OPT
<b>Cancel-Job</b>	REQ	<b>Cancel-Document</b>	OPT
<b>Create-Job</b>	OPT	<b>Create-Document</b>	REQ
<b>Get-Job-Attributes</b>	REQ	<b>Get-Document-Attributes</b>	REQ
<b>Get-Jobs</b>	REQ	<b>Get-Documents</b>	REQ
<b>Hold-Job</b>		<i>N/A, can only hold an entire job.</i>	
<b>Print-Job</b>	REQ	<b>Send-Document</b> (existing operation - see [RFC2911] with an additional Document attributes group defined in section 3.3)	REQ <sup>41</sup>
<b>Print-URI</b>	OPT	<b>Send-URI</b> (existing operation - see [RFC2911] with an additional Document attributes group defined in section 3.4)	OPT
<i>N/A</i>		<b>Send-Data</b>	REQ
<b>Promote-Job</b>	OPT	<i>N/A, can only promote an entire job</i>	
<b>Purge-Jobs</b>	OPT	<b>Delete-Document</b>	OPT
<b>Release-Held-New-Jobs</b>	OPT	<i>N/A, can only release entire jobs</i>	
<b>Release-Job</b>	OPT	<i>N/A, can only release an entire job</i>	
<b>Reprocess-Job</b>	OPT	<i>N/A, can only reprocess an entire job</i>	
<b>Restart-Job</b>	OPT	<i>N/A, can only restart an entire job</i>	
<b>Resume-Job</b>	OPT	<i>N/A, can only resume an entire job</i>	
<b>Schedule-Job-After</b>	OPT	<i>N/A, can only schedule an entire job</i>	
<b>Set-Job-Attributes</b>	OPT	<b>Set-Document-Attributes</b>	OPT
<b>Suspend-Current-Job</b>	OPT	<i>N/A, can only suspend an entire job in order to run another one</i>	
<b>Validate-Job</b>	REQ	<b>Validate-Document</b>	REQ

2101  
21022103 **21 Annex B: Change Log (informative)**

2104 Version 0.4, 14 September 2002:

- 2105 1. Added the operation specifications.  
 2106 2. Added the Create-Document and Send-Data to be more parallel with Jobs and support PWG PSI.  
 2107 3. Resolved the 15 issues in version 0.3 as discussed on the mailing list.

<sup>41</sup> The Send-Document operation is OPTIONAL for a Printer to conform to [RFC2911], but is REQUIRED for a Printer to conform to this Document object specification.

- 2108 4. Added the Attribute Precedence section 5.
- 2109 5. Added [prod-print2] attributes.
- 2110 6. Added job-mandatory-attributes, job-cover-back, job-cover-front, job-copies, job-finishings, job-finishings-col.
- 2111 document-id-uri, and redirect-uri.
- 2112

## Version 0.3, 9 September 2002:

- 2113
- 2114 1. Reformatted as an IEEE-ISTO standard and added the usual sections for a standard.
- 2115 2. Added "original-requesting-user-name" Operation attribute to Table 4.
- 2116 3. Added "y" to "output-bin" in Table 6 so it MAY be a Document Template attribute.
- 2117 4. Clarified the \* and \*\* in Table 7 - Job and Document Description attributes.
- 2118 5. Added section 9 all of the Printer attributes defined In any IPP standard.
- 2119 6. Allocated operation-id enums in section 10 to the 7 Document operations.
- 2120 7. Added the conformance section 11
- 2121 8. Completed the IANA Considerations section 14.
- 2122
- 2123